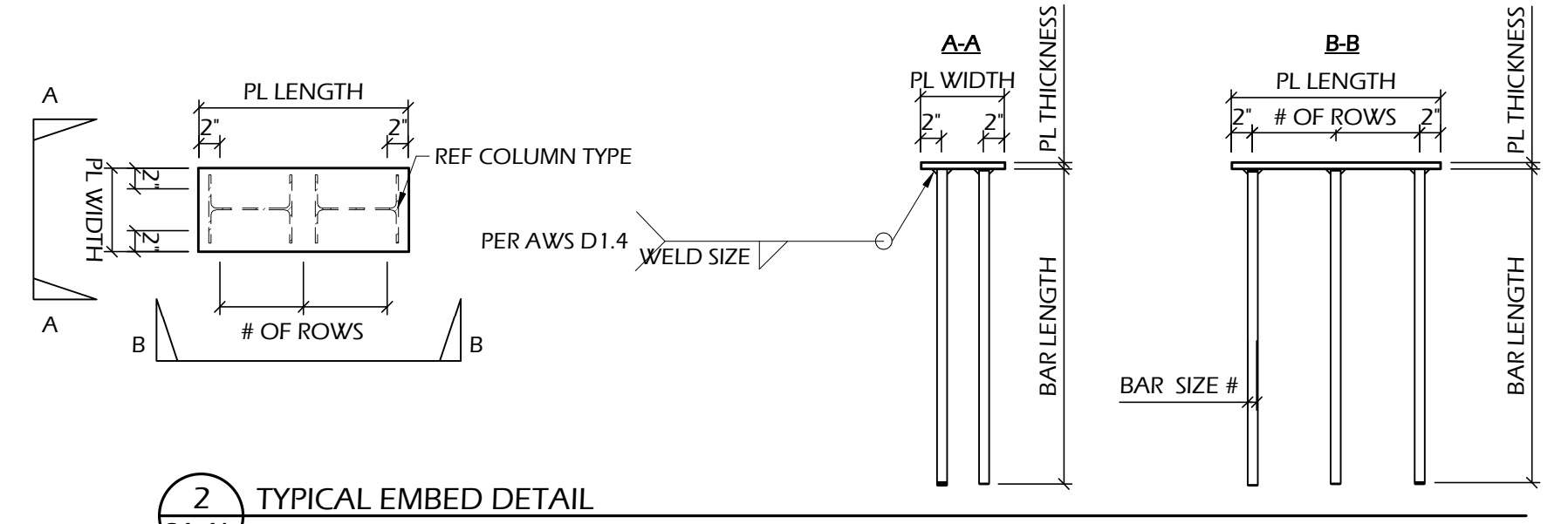


**1 FOUNDATION DIMENSION AND EMBEDMENTS PLAN**  
 1/8" = 1'-0" SEE SHEET S1.1a FOR DEFINITION OF ALL FOUNDATION ELEMENTS ASSEMBLIES



**2 TYPICAL EMBED DETAIL**  
 3/4" = 1'-0"

**COLUMN EMBED PLATE SCHEDULE**

PL ID	REF COL TYPE	PL WIDTH (in)	PL LENGTH (in)	PL THICKNESS (in)	BAR SIZE #	WELD SIZE	BAR LENGTH (in)	# OF BARS	# OF ROWS	COUNT
E1	W8	8"	10"	5/8"	Rebar: #4	6/16"	24"	4	2	1
E2	(2) W8	8"	20"	5/8"	Rebar: #7	7/16"	42"	6	3	4
E3	W14	8"	16"	3/4"	Rebar: #7	8/16"	42"	4	2	2
E4	W16	8"	18"	3/4"	Rebar: #7	8/16"	42"	4	2	2
E5	W14	6"	16"	5/8"	Rebar: #6	6/16"	36"	4	2	2
E6	HSS 5x5	10"	10"	5/8"	Rebar: #5	5/16"	30"	4	2	2
E7	HSS 6x6	8"	8"	5/8"	Rebar: #4	4/16"	24"	4	2	2
E8	HSS 10x6	8"	12"	5/8"	Rebar: #5	5/16"	30"	4	2	2
E9	HSS 4x4	7"	7"	1/2"	Rebar: #4	5/16"	20"	2	1	2
E10	Fence Post	6"	6"	1/2"	Rebar: #4	4/16"	16"	4	2	6

- ALL WELDS OF PLATE TO WELDABLE GRADE 60 A706 REBAR DOWELS PER AWS D1.4

**ISOLATED FOOTING SCHEDULE**

MARK	L	W	H	BAR SIZE	BAR QTY
A	2'-0"	2'-0"	8"	#5	3
B	2'-6"	2'-6"	8"	#5	3
C	3'-0"	3'-0"	8"	#5	4
D	3'-6"	3'-6"	8"	#5	4
E	4'-0"	4'-0"	10"	#5	5
F	5'-0"	5'-0"	1'-0"	#6	6
G	6'-0"	6'-0"	1'-0"	#6	8
H	4'-0"	2'-6"	8"	#5	4/3

PROJECT NO:  
 ISSUE DATE: 12/17/21  
 REVISIONS:  
 Permit Set 12/17/2021  
 ASI 02 07/29/2022  
 Delta 3 08/31/2022

SHEET TITLE:  
**FOUNDATION DIMENSION AND EMBEDMENTS PLAN**

SHEET NUMBER:

**S1.1b**