

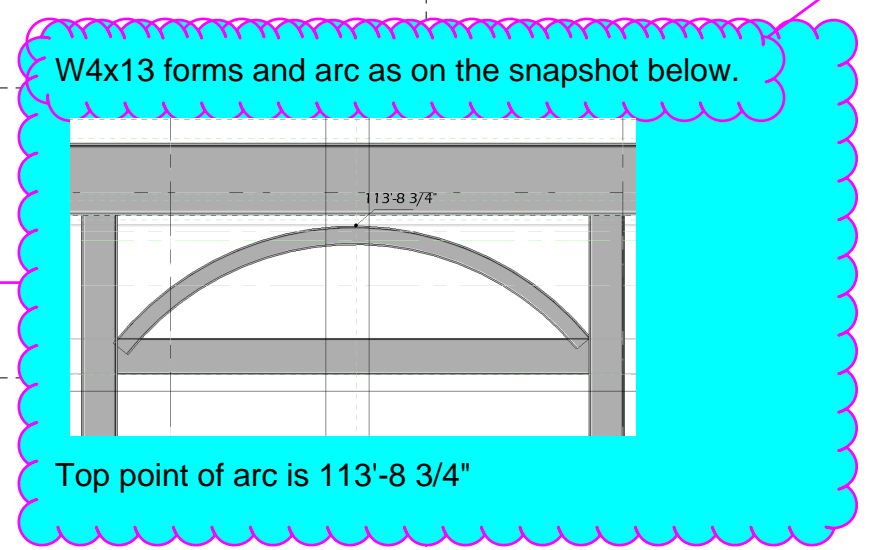
Joel, we don't have connection identified on 3/S3.6 - just an embed and W8x18 shown. We assume the idea was to weld W8s to embeds. Please advise on the welding sizes.

Length of the channel should be calculated as the width of the opening plus 16" MIN EA side of the opening. B.O.S. should be equal to the top of existing opening. See detail 16/S3.5

Top of openings is 111'-0" With 12" high HSS, 112'-0" is correct.

Adjust GL12 location per the recent changes and maintain 1'-0" offset as shown.

Joel, we don't see these arcs in the latest Arch model. Have they been removed?



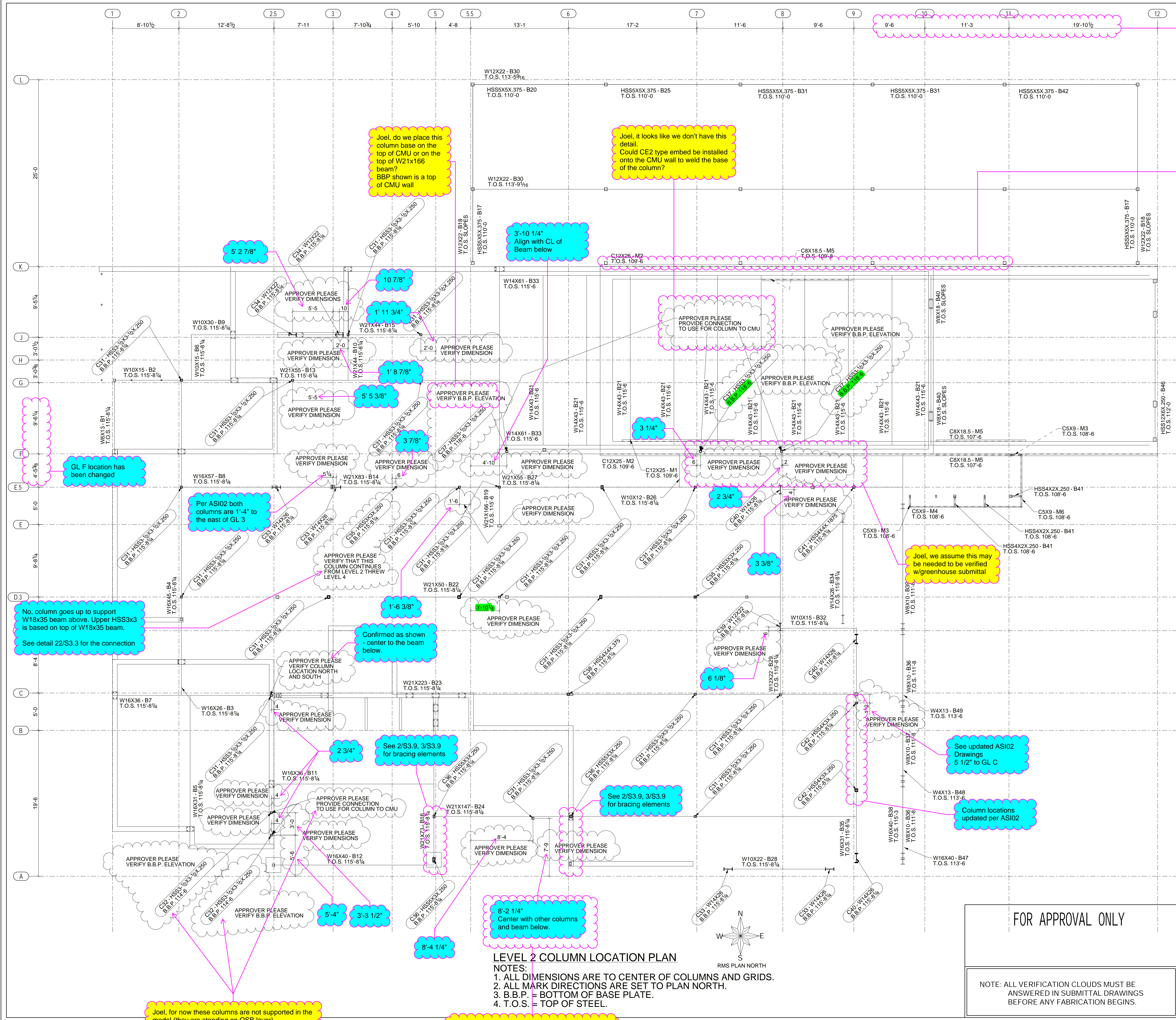
REV		DATE	DESCRIPTION
A	07/28/2022	RFI	FOR LEVEL 2 BEAM LOCATIONS

JOB NAME: OLD FIREHOUSE

FOR APPROVAL ONLY

NOTE: ALL VERIFICATION CLOUDS MUST BE ANSWERED IN SUBMITTAL DRAWINGS BEFORE ANY FABRICATION BEGINS.

LEVEL 2 BEAM FRAMING LOCATION PLAN
NOTES:
 1. ALL DIMENSIONS ARE TO CENTER OF BEAMS AND GRIDS.
 2. ALL MARK DIRECTIONS ARE SET TO PLAN NORTH.
 3. B.B.P. = BOTTOM OF BASE PLATE.
 4. T.O.S. = TOP OF STEEL.



See Updated GL Dimensions per latest Arch

Joel, do we place this column base on the top of CMU or on the top of W21x166 beam? BBP shown is a top of CMU wall

Joel, it looks like we don't have this detail. Could CE2 type embed be installed onto the CMU wall to weld the base of the column?

4-HSS columns here have been removed per ASI02 - existing wall changes. Channel to be bolted to the bond beam over the existing wall.

3'-10 1/4" Align with CL of Beam below

5' 2 7/8"

10 7/8"

1' 11 3/4"

1' 8 7/8"

5' 5 3/8"

3 7/8"

3 1/4"

2 3/4"

3 3/8"

1'-6 3/8"

Confirmed as shown - center to the beam below.

6 1/8"

2 3/4"

See 2/S3.9, 3/S3.9 for bracing elements

See 2/S3.9, 3/S3.9 for bracing elements

See updated ASI02 Drawings 5 1/2" to GL C

Column locations updated per ASI02

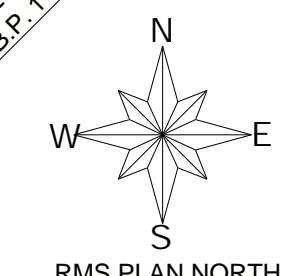
5'-4"

3'-3 1/2"

8'-2 1/4" Center with other columns and beam below.

8'-4 1/4"

LEVEL 2 COLUMN LOCATION PLAN
 NOTES:
 1. ALL DIMENSIONS ARE TO CENTER OF COLUMNS AND GRIDS.
 2. ALL MARK DIRECTIONS ARE SET TO PLAN NORTH.
 3. B.B.P. = BOTTOM OF BASE PLATE.
 4. T.O.S. = TOP OF STEEL.



FOR APPROVAL ONLY

NOTE: ALL VERIFICATION CLOUDS MUST BE ANSWERED IN SUBMITTAL DRAWINGS BEFORE ANY FABRICATION BEGINS.

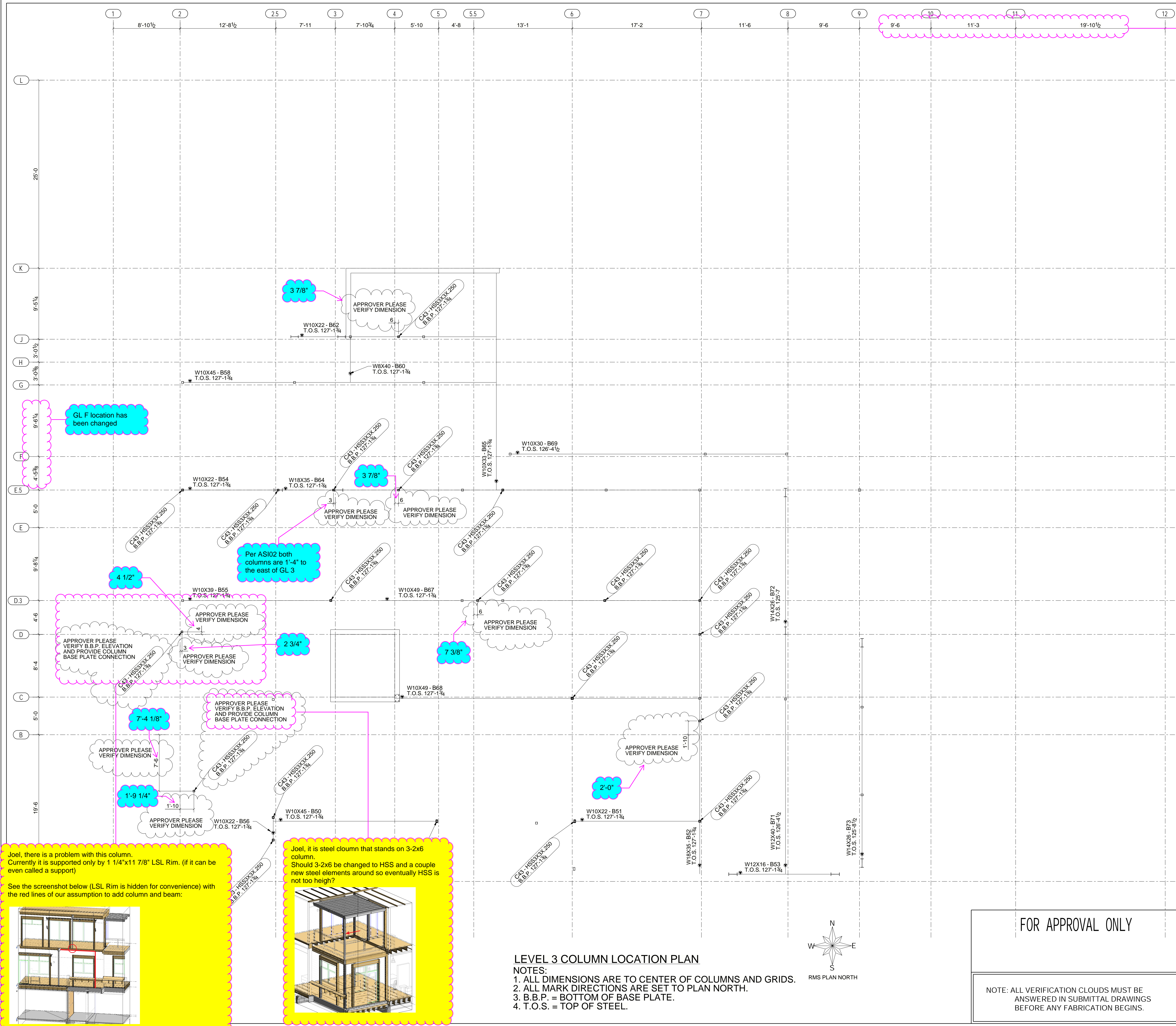
REVISIONS		
REV.	DATE	DESCRIPTION
A	07/28/2022	RFI FOR LEVEL 2 COLUMN LOCATIONS

JOB NAME OLD FI REHOUSE

Joel, for now these columns are not supported in the model (they are standing on OSB layer).

Joel this column was off the center of the beam below. Looks like it was made to align this column with the

See Updated GL Dimensions per latest Arch



LEVEL 3 COLUMN LOCATION PLAN
 NOTES:
 1. ALL DIMENSIONS ARE TO CENTER OF COLUMNS AND GRIDS.
 2. ALL MARK DIRECTIONS ARE SET TO PLAN NORTH.
 3. B.B.P. = BOTTOM OF BASE PLATE.
 4. T.O.S. = TOP OF STEEL.

FOR APPROVAL ONLY

NOTE: ALL VERIFICATION CLOUDS MUST BE ANSWERED IN SUBMITTAL DRAWINGS BEFORE ANY FABRICATION BEGINS.

REV.		DATE	DESCRIPTION
A		07/29/2022	RFI FOR LEVEL 3 COLUMN LOCATIONS

JOB NAME: OLD FIREHOUSE

