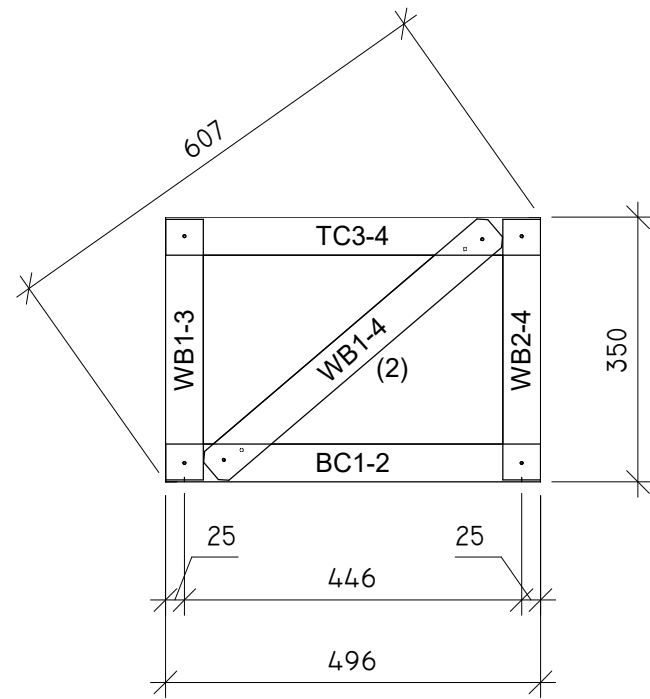
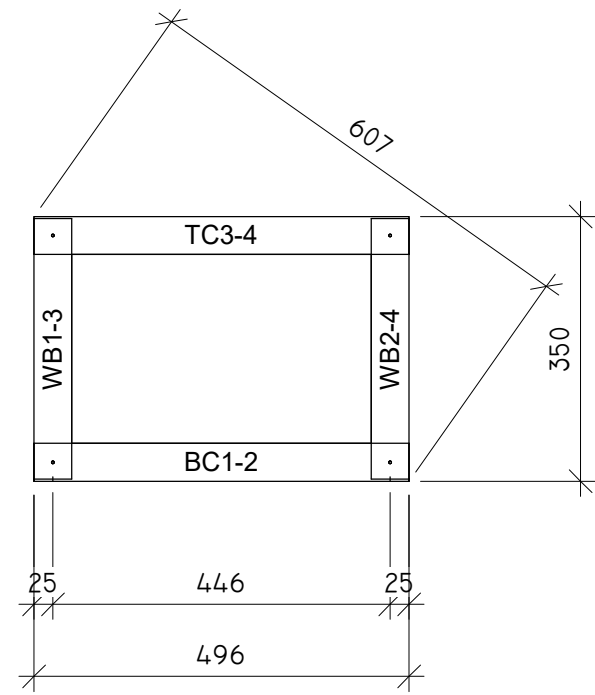


Pos.	Section	Length	Weight	Quant.
BC1-2	C100.50.12	496	1	1
TC3-4	C100.50.12	496	1	1
WB1-3	C.100.50.12	344	0.7	1
WB1-4	C.100.50.12	494	1.0	1
WB2-4	C.100.50.12	344	0.7	1
B1 Truss Instances Count: 3				



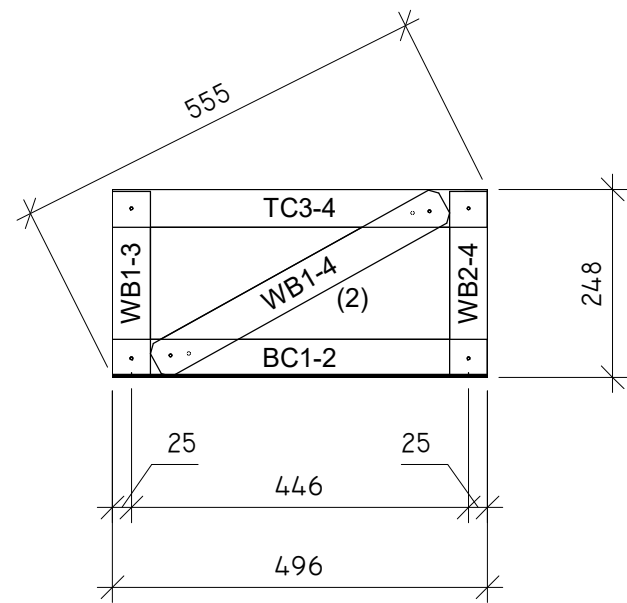
Qualif. doc. No.		Name of the project:		
39 232	PV		Building number and name, title of the document: 01. GARAGE BUILDING B1 M As indicated	Issue
A 082	PDV SA			0
EN	Customer (builder): E. D.	Document identifier:	Sheet	Total
			15	51

Pos.	Section	Length	Weight	Quant.
BC1-2	C100.50.12	496	1	1
TC3-4	C100.50.12	496	1	1
WB1-3	C.100.50.12	344	0.7	1
WB2-4	C.100.50.12	344	0.7	1
B2 Truss Instances Count: 12				

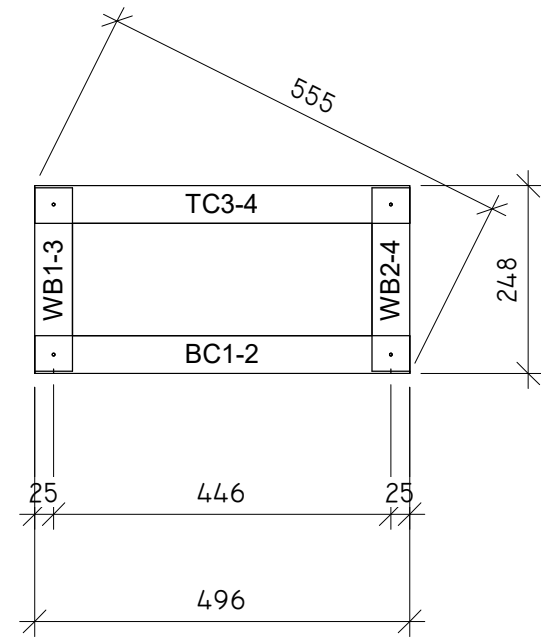


Qualif. doc. No.		Name of the project:		
39 232	PV		Building number and name, title of the document: 01. GARAGE BUILDING B2 M As indicated	Issue
A 082	PDV SA			0
EN	Customer (builder): E. D.	Document identifier:	Sheet	Total
			16	51

Pos.	Section	Length	Weight	Quant.
BC1-2	C100.50.12	496	1	1
TC3-4	C100.50.12	496	1	1
WB1-3	C.100.50.12	243	0.49	1
WB1-4	C.100.50.12	437	0.88	1
WB2-4	C.100.50.12	243	0.49	1
B3 Truss Instances Count: 4				



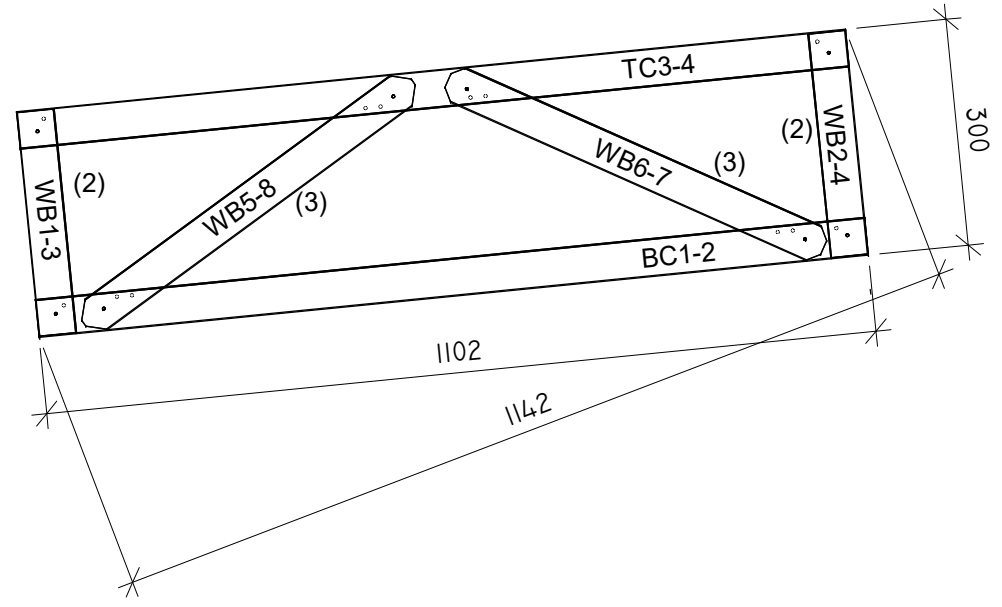
Qualif. doc. No.		Name of the project:		
39 232	PV		Building number and name, title of the document: 01. GARAGE BUILDING B3 M As indicated	Issue
A 082	PDV SA			0
EN	Customer (builder): E. D.	Document identifier:	Sheet	Total
			17	51



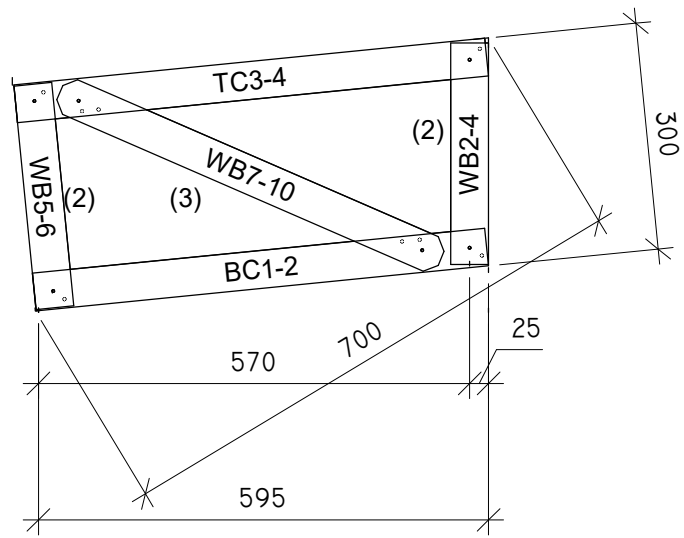
Pos.	Section	Length	Weight	Quant.
BC1-2	C100.50.12	496	1	1
TC3-4	C100.50.12	496	1	1
WB1-3	C.100.50.12	243	0.49	1
WB2-4	C.100.50.12	243	0.49	1
B4 Truss Instances Count: 14				

Qualif. doc. No.			Name of the project:	
	39 232	PV	Building number and name, title of the document: 01. GARAGE BUILDING B4 M As indicated	Issue
A 082	PDV SA	0		
EN	Customer (builder): E. D.		Document identifier:	Sheet 18
			Total	51

Pos.	Section	Length	Weight	Quant.
BC1-2	C100.50.12	1102	2.22	1
TC3-4	C100.50.12	1102	2.22	1
WB1-3	C.100.50.12	297	0.6	1
WB2-4	C.100.50.12	297	0.6	1
WB5-8	C.100.50.12	540	1.1	1
WB6-7	C.100.50.12	544	1.1	1
BT1 Truss Instances Count: 19				



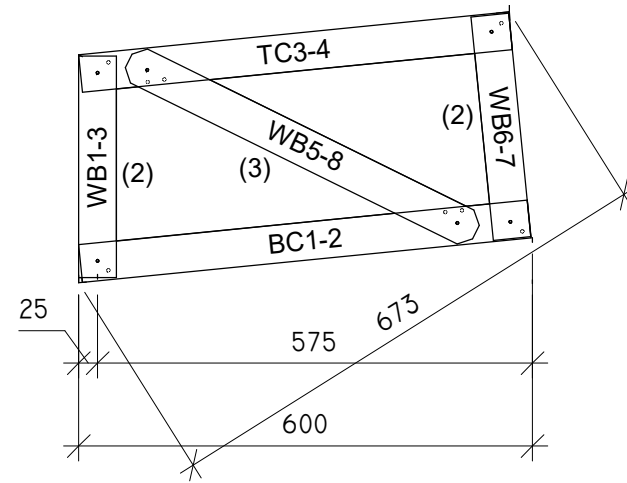
Qualif. doc. No.		Name of the project:		
39 232	PV		Building number and name, title of the document:	Issue
A 082	PDV SA			01. GARAGE BUILDING BT1 M As indicated
EN	Customer (builder): E. D.	Document identifier:	Sheet	Total
			19	51



Pos.	Section	Length	Weight	Quant.
BC1-2	C100.50.12	601	1.21	1
TC3-4	C100.50.12	626	1.27	1
WB2-4	C.100.50.12	293	0.59	1
WB5-6	C.100.50.12	297	0.59	1
WB7-10	C.100.50.12	550	1.07	1
BT2 Truss Instances Count: 2				

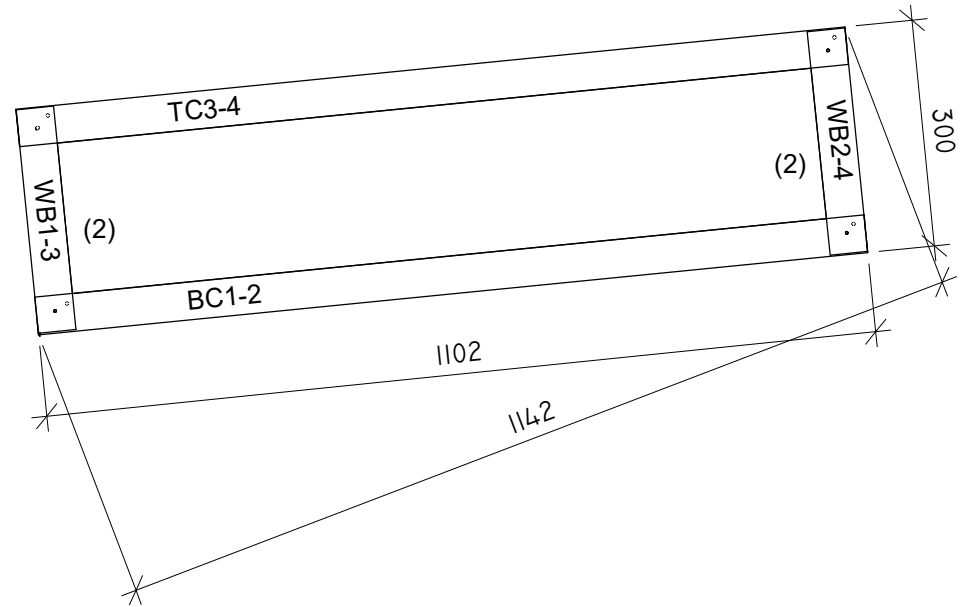
Qualif. doc. No.		Name of the project:		
39 232	PV		Building number and name, title of the document: 01. GARAGE BUILDING BT2 M As indicated	Issue
A 082	PDV SA			0
EN	Customer (builder): E. D.	Document identifier:	Sheet	Total
			20	51

Pos.	Section	Length	Weight	Quant.
BC1-2	C100.50.12	596	1.21	1
TC3-4	C100.50.12	571	1.15	1
WB1-3	C.100.50.12	293	0.59	1
WB5-8	C.100.50.12	512	1.02	1
WB6-7	C.100.50.12	297	0.59	1
BT3 Truss Instances Count: 2				

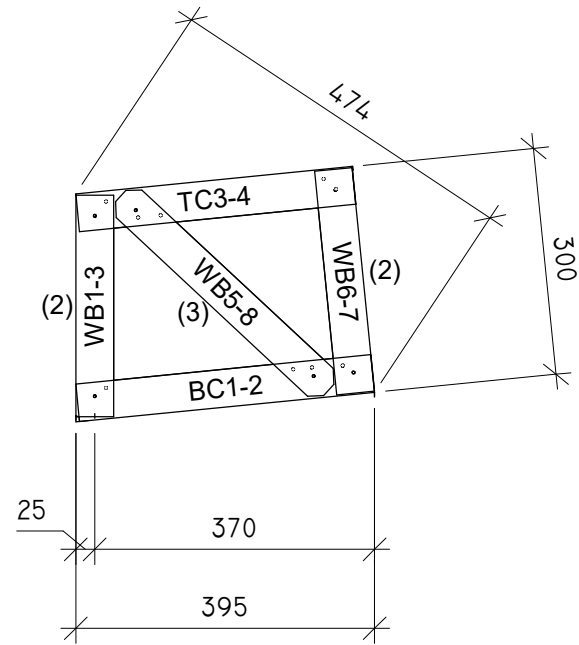


Qualif. doc. No.		Name of the project:		
39 232	PV		Building number and name, title of the document:	Issue
A 082	PDV SA			01. GARAGE BUILDING BT3 M As indicated
EN	Customer (builder): E. D.	Document identifier:	Sheet	Total
			21	51

Pos.	Section	Length	Weight	Quant.
BC1-2	C100.50.12	1102	2.22	1
TC3-4	C100.50.12	1102	2.22	1
WB1-3	C.100.50.12	297	0.6	1
WB2-4	C.100.50.12	297	0.6	1
BT4 Truss Instances Count: 20				



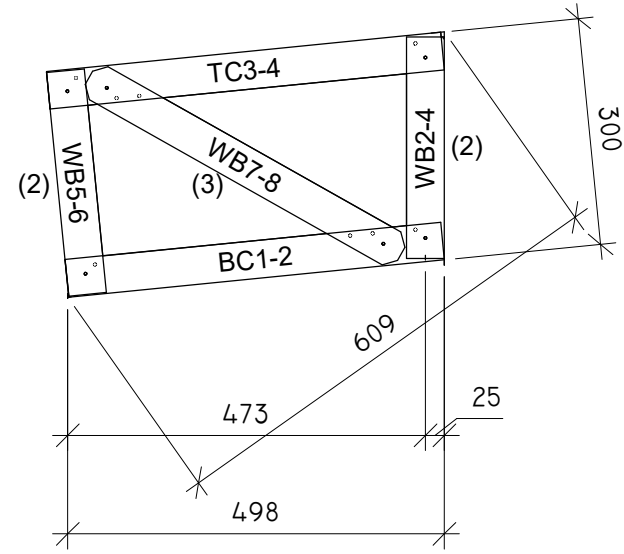
Qualif. doc. No.		Name of the project:		
39 232	PV		Building number and name, title of the document: 01. GARAGE BUILDING BT4 M As indicated	Issue
A 082	PDV SA			0
EN	Customer (builder): E. D.	Document identifier:	Sheet	Total
			22	51



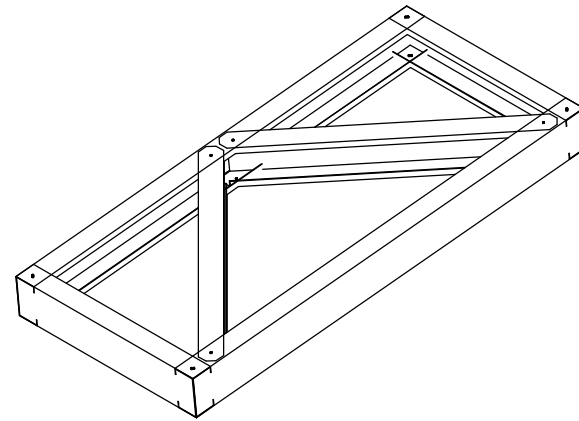
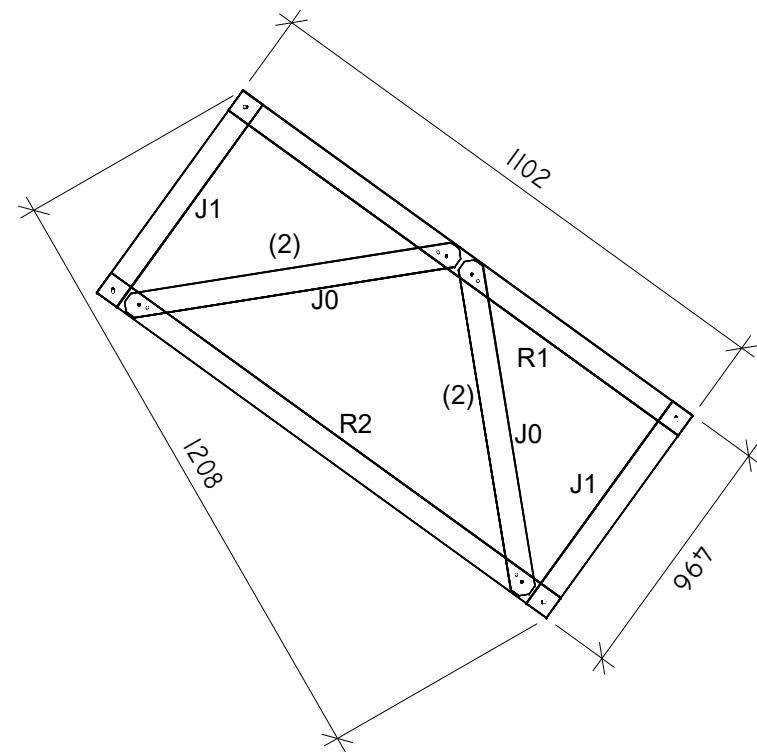
Pos.	Section	Length	Weight	Quant.
BC1-2	C100.50.12	392	0.8	1
TC3-4	C100.50.12	367	0.74	1
WB1-3	C.100.50.12	293	0.59	1
WB5-8	C.100.50.12	376	0.69	1
WB6-7	C.100.50.12	297	0.59	1
BT5 Truss Instances Count: 6				

Qualif. doc. No.		Name of the project:		
39 232	PV		Building number and name, title of the document: 01. GARAGE BUILDING BT5 M As indicated	Issue
A 082	PDV SA			0
EN	Customer (builder): E. D.	Document identifier:	Sheet	Total
			23	51

Pos.	Section	Length	Weight	Quant.
BC1-2	C100.50.12	499	1	1
TC3-4	C100.50.12	524	1.06	1
WB2-4	C.100.50.12	293	0.59	1
WB5-6	C.100.50.12	297	0.59	1
WB7-8	C.100.50.12	474	0.89	1
BT6 Truss Instances Count: 6				



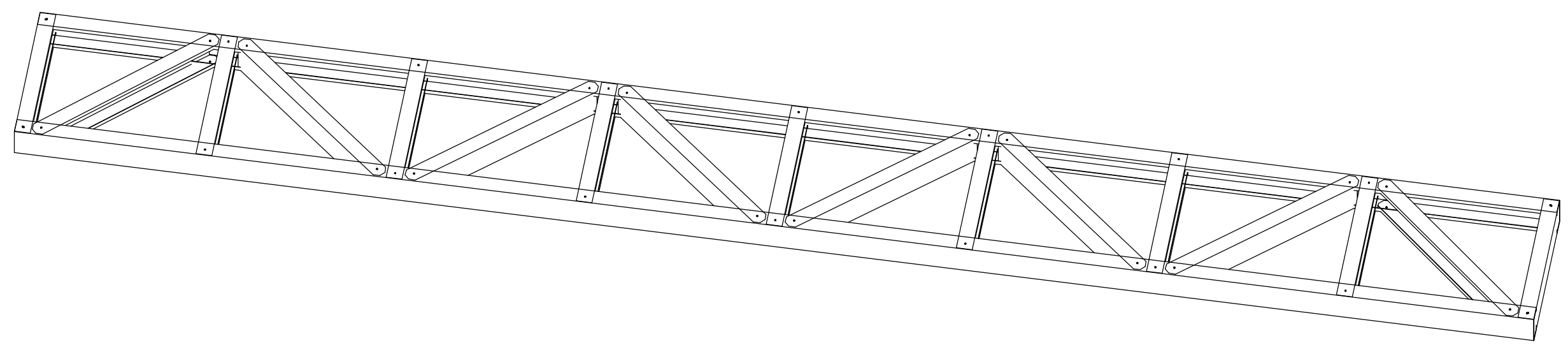
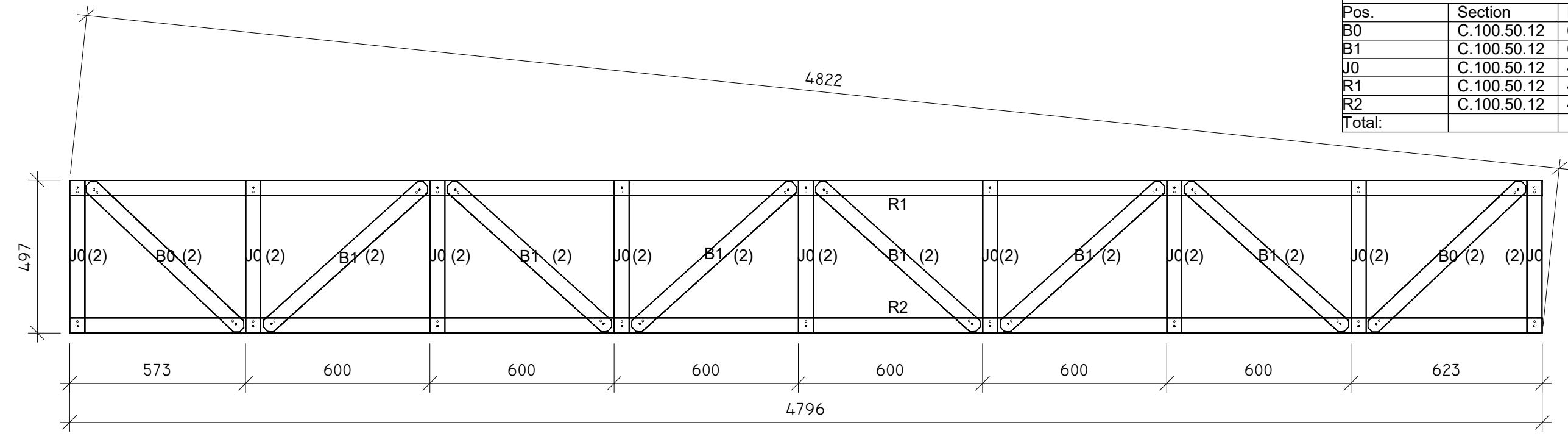
Qualif. doc. No.		Name of the project:		
39 232	PV		Building number and name, title of the document: 01. GARAGE BUILDING BT6 M As indicated	Issue
A 082	PDV SA			0
EN	Customer (builder): E. D.	Document identifier:	Sheet	Total
			24	51



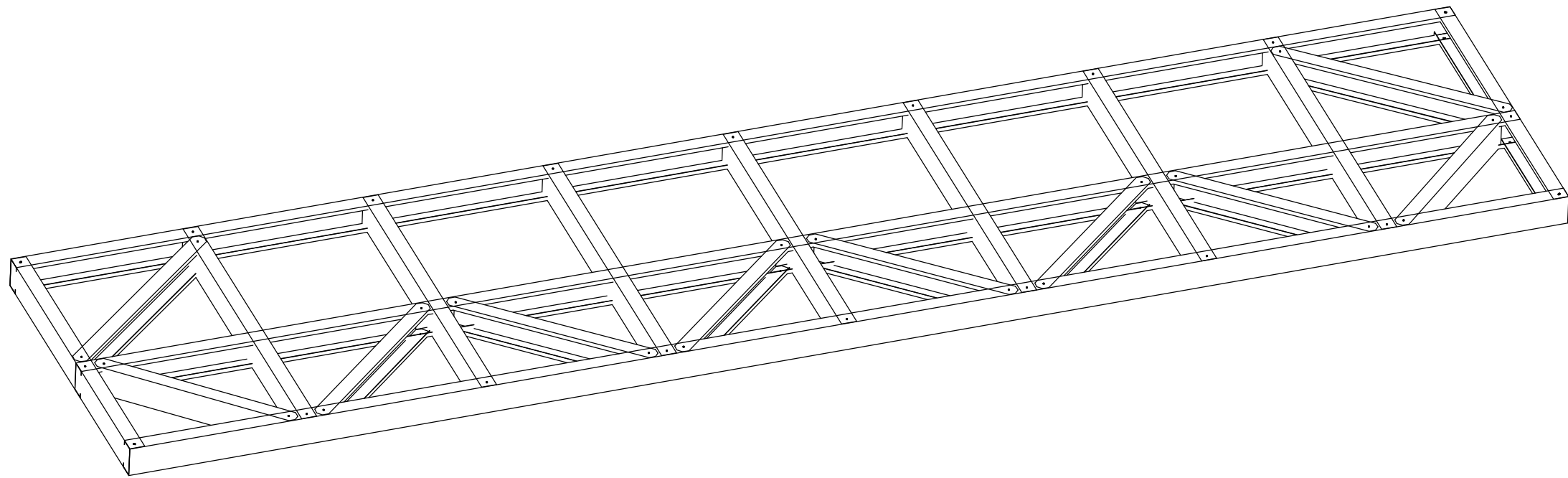
R1			
Pos.	Section	Length	Quant.
J0	C.100.50.12	672	2
J1	C.100.50.12	496	2
R1	C.100.50.12	1102	1
R2	C.100.50.12	1102	1
Total:			

Qualif. doc. No.			Name of the project:		
	39 232	PV	Building number and name, title of the document: 01. GARAGE BUILDING R1 M As indicated	Issue	
A 082	PDV SA	0			
EN	Customer (builder): E. D.		Document identifier:	Sheet	Total
				25	51

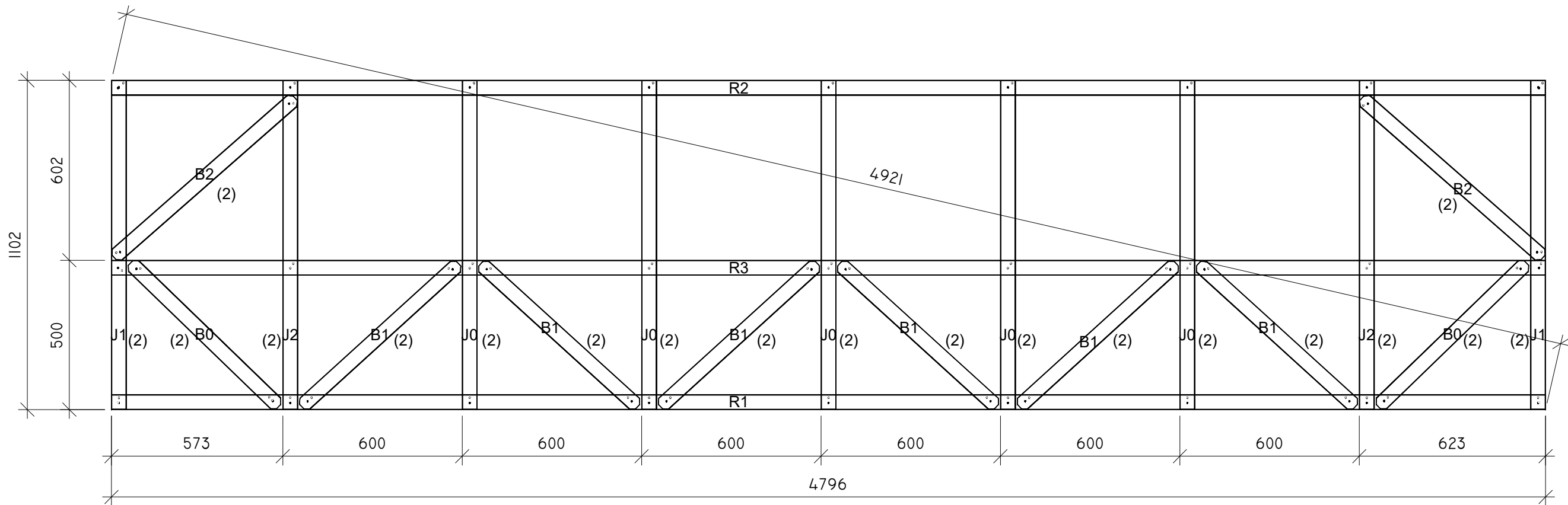
R2			
Pos.	Section	Length	Quant.
B0	C.100.50.12	682	2
B1	C.100.50.12	699	6
J0	C.100.50.12	495	9
R1	C.100.50.12	4796	1
R2	C.100.50.12	4796	1
Total:			



Qualif. doc. No.			Name of the project:		
	39 232	PV	Building number and name, title of the document: 01. GARAGE BUILDING R2 M As indicated		
A 082	PDV SA	Issue 0			
EN	Customer (builder): E. D.		Document identifier:	Sheet 26	Total 51

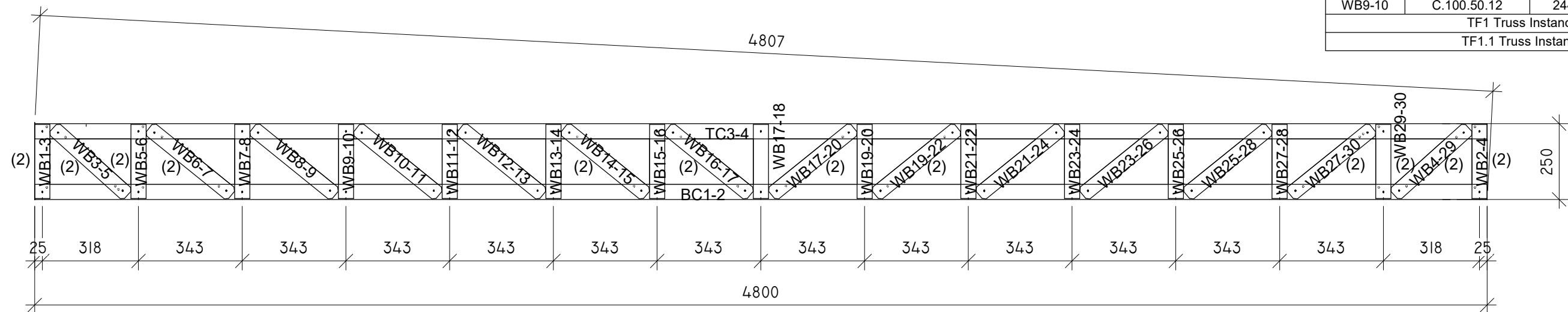


R3			
Pos.	Section	Length	Quant.
B0	C.100.50.12	690	2
B1	C.100.50.12	710	6
B2	C.100.50.12	807	2
J0	C.100.50.12	1100	5
J1	C.100.50.12	1100	2
J2	C.100.50.12	1100	2
R1	C.100.50.12	4796	1
R2	C.100.50.12	4796	1
R3	C.100.50.12	4796	1
Total:			



Qualif. doc. No.			Name of the project:	
39 232	PV			Building number and name, title of the document: 01. GARAGE BUILDING R3 M As indicated
A 082	PDV SA			
EN	Customer (builder): E. D.		Document identifier:	Issue 0
			Sheet	Total
			27	51

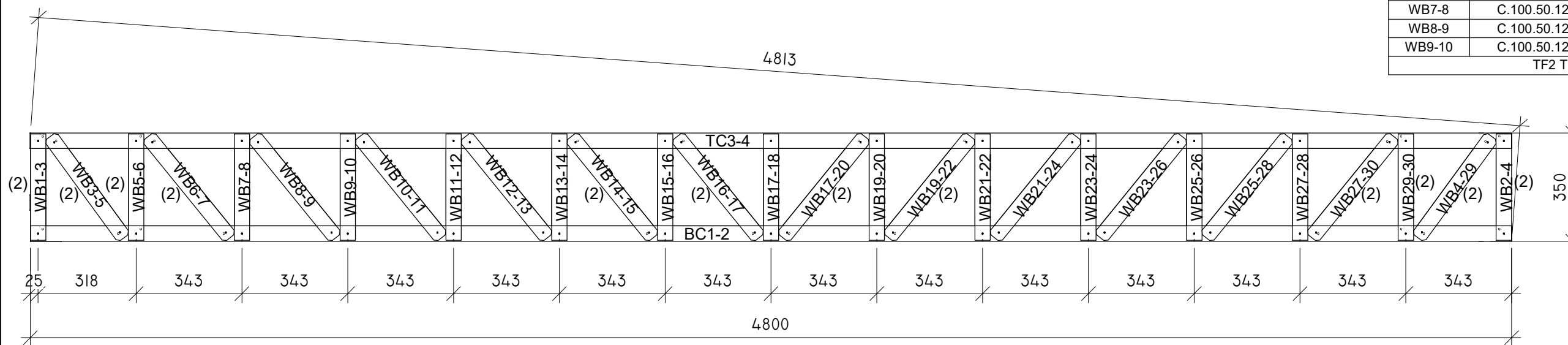
Pos.	Section	Length	Weight	Quant.
BC1-2	C100.50.12	4800	9.7	1
TC3-4	C100.50.12	4800	9.7	1
WB10-11	C.100.50.12	323	0.65	1
WB11-12	C.100.50.12	244	0.49	1
WB12-13	C.100.50.12	323	0.65	1
WB1-3	C.100.50.12	244	0.49	1
WB13-14	C.100.50.12	244	0.49	1
WB14-15	C.100.50.12	323	0.65	1
WB15-16	C.100.50.12	244	0.49	1
WB16-17	C.100.50.12	323	0.65	1
WB17-18	C.100.50.12	244	0.49	1
WB17-20	C.100.50.12	323	0.65	1
WB19-20	C.100.50.12	244	0.49	1
WB19-22	C.100.50.12	323	0.65	1
WB21-22	C.100.50.12	244	0.49	1
WB21-24	C.100.50.12	323	0.65	1
WB23-24	C.100.50.12	244	0.49	1
WB23-26	C.100.50.12	323	0.65	1
WB2-4	C.100.50.12	244	0.49	1
WB25-26	C.100.50.12	244	0.49	1
WB25-28	C.100.50.12	323	0.65	1
WB27-28	C.100.50.12	244	0.49	1
WB27-30	C.100.50.12	323	0.65	1
WB29-30	C.100.50.12	244	0.49	1
WB3-5	C.100.50.12	305	0.62	1
WB4-29	C.100.50.12	305	0.62	1
WB5-6	C.100.50.12	244	0.49	1
WB6-7	C.100.50.12	323	0.65	1
WB7-8	C.100.50.12	244	0.49	1
WB8-9	C.100.50.12	323	0.65	1
WB9-10	C.100.50.12	244	0.49	1
TF1 Truss Instances Count: 3				
TF1.1 Truss Instances Count: 1				



Qualif. doc. No.		Name of the project:		
39 232	PV	Building number and name, title of the document:	Issue	
A 082	PDV SA		0	
EN	Customer (builder):	Document identifier:	Sheet	Total
	E. D.		28	51

Pos.	Section	Length	Weight	Quant.
BC1-2	C100.50.12	4800	9.7	1
TC3-4	C100.50.12	4800	9.7	1
WB10-11	C.100.50.12	405	0.82	1
WB11-12	C.100.50.12	344	0.69	1
WB12-13	C.100.50.12	405	0.82	1
WB1-3	C.100.50.12	344	0.69	1
WB13-14	C.100.50.12	344	0.69	1
WB14-15	C.100.50.12	405	0.82	1
WB15-16	C.100.50.12	344	0.69	1
WB16-17	C.100.50.12	405	0.82	1
WB17-18	C.100.50.12	344	0.69	1
WB17-20	C.100.50.12	405	0.82	1
WB19-20	C.100.50.12	344	0.69	1
WB19-22	C.100.50.12	405	0.82	1
WB21-22	C.100.50.12	344	0.69	1
WB21-24	C.100.50.12	405	0.82	1
WB23-24	C.100.50.12	344	0.69	1
WB23-26	C.100.50.12	405	0.82	1
WB2-4	C.100.50.12	344	0.69	1
WB25-26	C.100.50.12	344	0.69	1
WB25-28	C.100.50.12	405	0.82	1
WB27-28	C.100.50.12	344	0.69	1
WB27-30	C.100.50.12	405	0.82	1
WB29-30	C.100.50.12	344	0.69	1
WB3-5	C.100.50.12	378	0.76	1
WB4-29	C.100.50.12	405	0.82	1
WB5-6	C.100.50.12	344	0.69	1
WB6-7	C.100.50.12	405	0.82	1
WB7-8	C.100.50.12	344	0.69	1
WB8-9	C.100.50.12	405	0.82	1
WB9-10	C.100.50.12	344	0.69	1

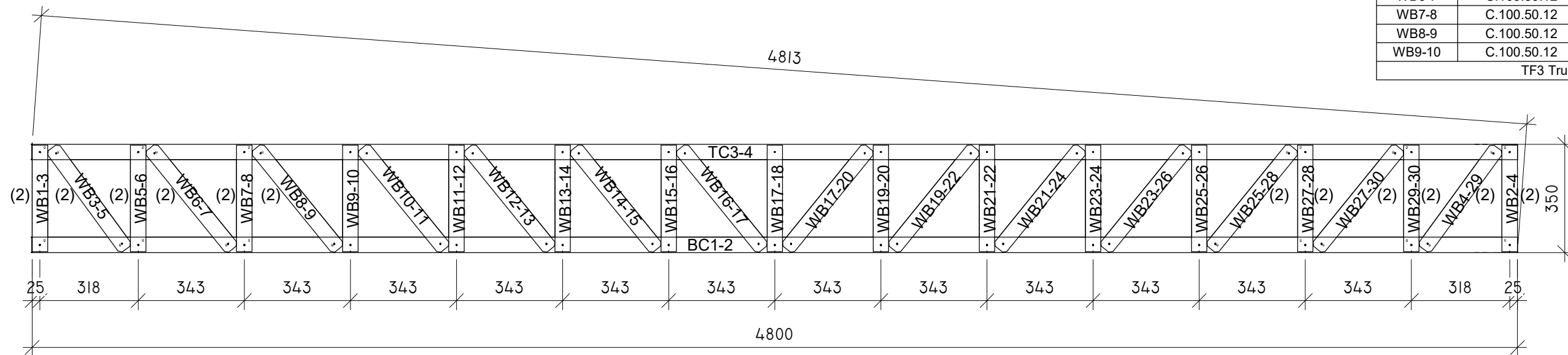
TF2 Truss Instances Count: 1



Qualif. doc. No.		Name of the project:		
39 232	PV	Building number and name, title of the document: 01. GARAGE BUILDING TF2 M As indicated	Issue	
A 082	PDV SA		0	
EN	Customer (builder): E. D.	Document identifier:	Sheet	Total
			29	51

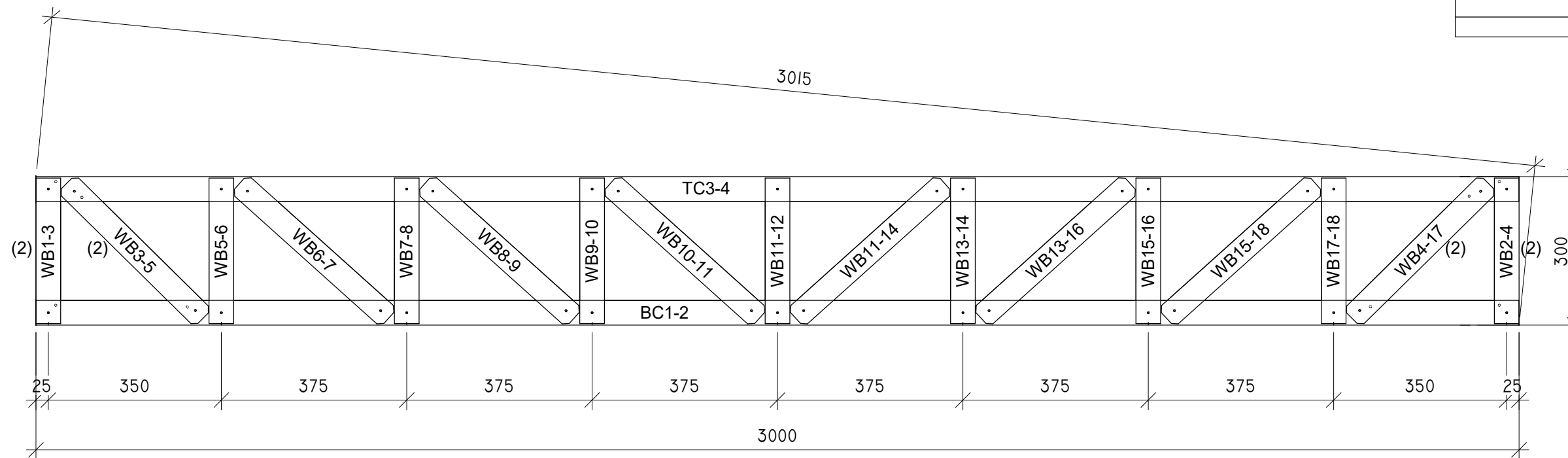
Pos.	Section	Length	Weight	Quant.
BC1-2	C100.50.12	4800	9.7	1
TC3-4	C100.50.12	4800	9.7	1
WB10-11	C.100.50.12	405	0.82	1
WB11-12	C.100.50.12	344	0.69	1
WB12-13	C.100.50.12	405	0.82	1
WB1-3	C.100.50.12	344	0.69	1
WB13-14	C.100.50.12	344	0.69	1
WB14-15	C.100.50.12	405	0.82	1
WB15-16	C.100.50.12	344	0.69	1
WB16-17	C.100.50.12	405	0.82	1
WB17-18	C.100.50.12	344	0.69	1
WB17-20	C.100.50.12	405	0.82	1
WB19-20	C.100.50.12	344	0.69	1
WB19-22	C.100.50.12	405	0.82	1
WB21-22	C.100.50.12	344	0.69	1
WB21-24	C.100.50.12	405	0.82	1
WB23-24	C.100.50.12	344	0.69	1
WB23-26	C.100.50.12	405	0.82	1
WB2-4	C.100.50.12	344	0.69	1
WB25-26	C.100.50.12	344	0.69	1
WB25-28	C.100.50.12	405	0.82	1
WB27-28	C.100.50.12	344	0.69	1
WB27-30	C.100.50.12	405	0.82	1
WB29-30	C.100.50.12	344	0.69	1
WB3-5	C.100.50.12	378	0.76	1
WB4-29	C.100.50.12	405	0.82	1
WB5-6	C.100.50.12	344	0.69	1
WB6-7	C.100.50.12	405	0.82	1
WB7-8	C.100.50.12	344	0.69	1
WB8-9	C.100.50.12	405	0.82	1
WB9-10	C.100.50.12	344	0.69	1

TF3 Truss Instances Count: 3



Qualif. doc. No.		Name of the project:		
39 232	PV	Building number and name, title of the document: 01. GARAGE BUILDING TF3 M As indicated	Issue	
A 082	PDV SA		0	
EN	Customer (builder): E. D.	Document identifier:	Sheet	Total
			30	51

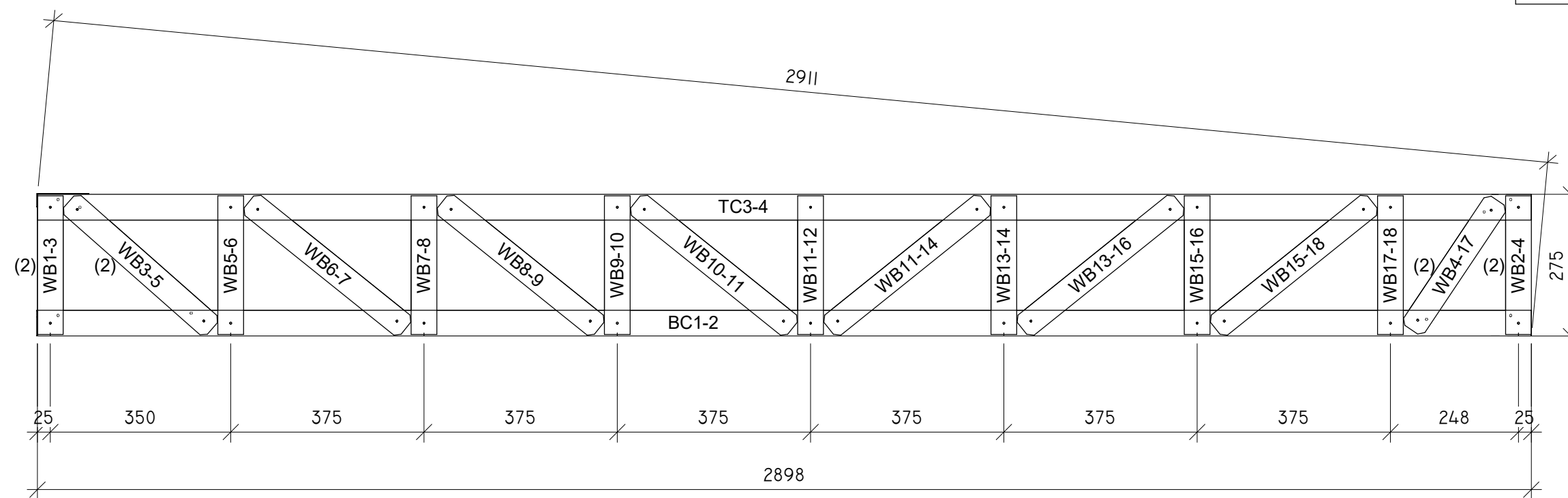
Pos.	Section	Length	Weight	Quant.
BC1-2	C100.50.12	3000	6.06	1
TC3-4	C100.50.12	3000	6.06	1
WB10-11	C.100.50.12	406	0.82	1
WB11-12	C.100.50.12	294	0.59	1
WB11-14	C.100.50.12	406	0.82	1
WB1-3	C.100.50.12	294	0.59	1
WB13-14	C.100.50.12	294	0.59	1
WB13-16	C.100.50.12	406	0.82	1
WB15-16	C.100.50.12	294	0.59	1
WB15-18	C.100.50.12	406	0.82	1
WB17-18	C.100.50.12	294	0.59	1
WB2-4	C.100.50.12	294	0.59	1
WB3-5	C.100.50.12	388	0.78	1
WB4-17	C.100.50.12	38	0.78	1
WB5-6	C.100.50.12	294	0.59	1
WB6-7	C.100.50.12	406	0.82	1
WB7-8	C.100.50.12	294	0.59	1
WB8-9	C.100.50.12	406	0.82	1
WB9-10	C.100.50.12	294	0.59	1
TT1 Truss Instances Count: 3				
TT1.1 Truss Instances Count: 1				



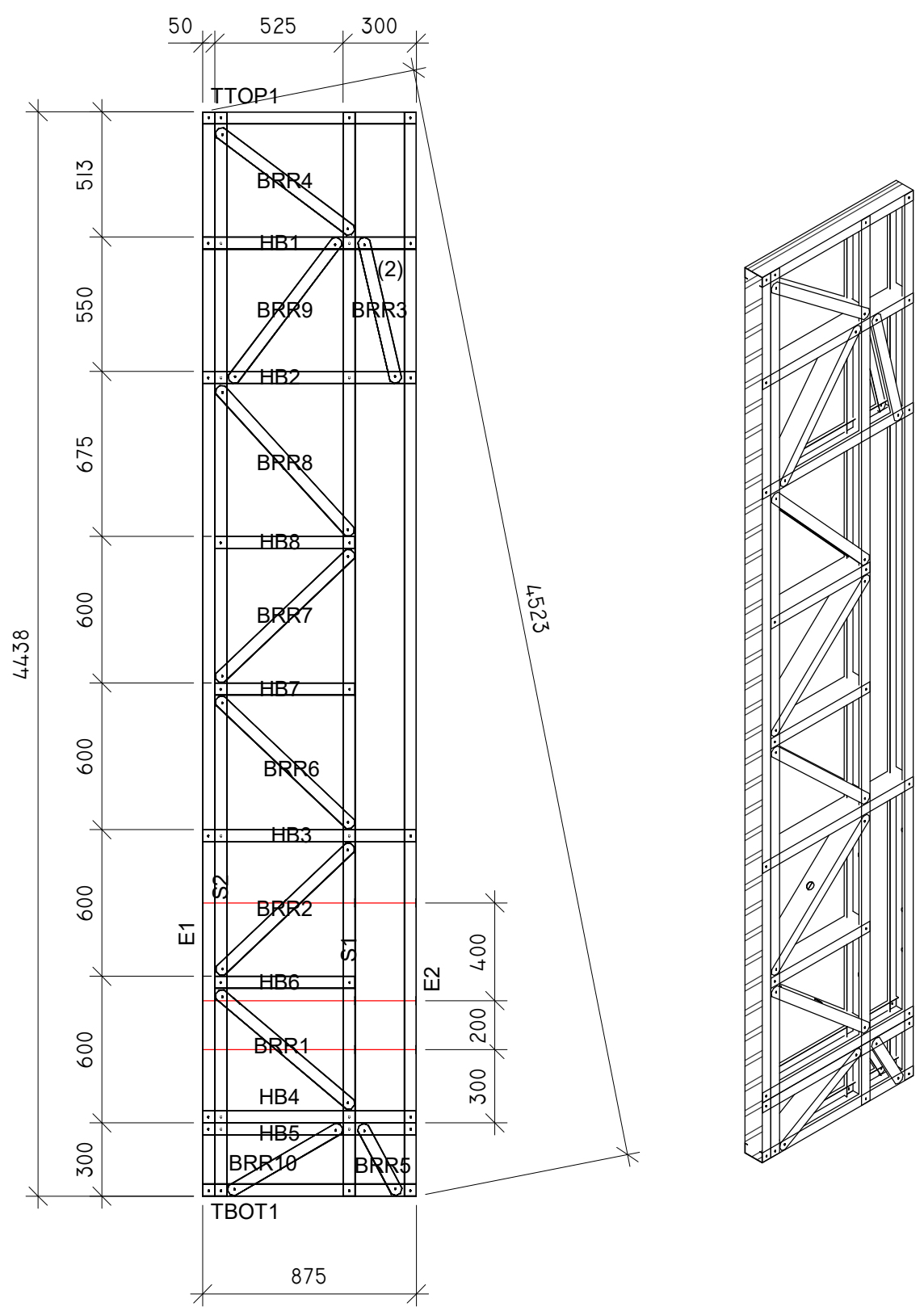
Qualif. doc. No.		Name of the project:		
39 232	PV	Building number and name, title of the document:	Issue	
A 082	PDV SA		0	
		Customer (builder):	Document identifier:	
EN	E. D.		Sheet	Total
			32	51

Pos.	Section	Length	Weight	Quant.
BC1-2	C100.50.12	2898	5.85	1
TC3-4	C100.50.12	2898	5.85	1
WB10-11	C.100.50.12	391	0.79	1
WB11-12	C.100.50.12	269	0.54	1
WB11-14	C.100.50.12	391	0.79	1
WB1-3	C.100.50.12	269	0.54	1
WB13-14	C.100.50.12	269	0.54	1
WB13-16	C.100.50.12	391	0.79	1
WB15-16	C.100.50.12	269	0.54	1
WB15-18	C.100.50.12	391	0.79	1
WB17-18	C.100.50.12	269	0.54	1
WB2-4	C.100.50.12	269	0.54	1
WB3-5	C.100.50.12	345	0.70	1
WB4-17	C.100.50.12	301	0.61	1
WB5-6	C.100.50.12	269	0.54	1
WB6-7	C.100.50.12	391	0.79	1
WB7-8	C.100.50.12	269	0.54	1
WB8-9	C.100.50.12	391	0.79	1
WB9-10	C.100.50.12	269	0.54	1

TT2 Truss Instances Count: 1

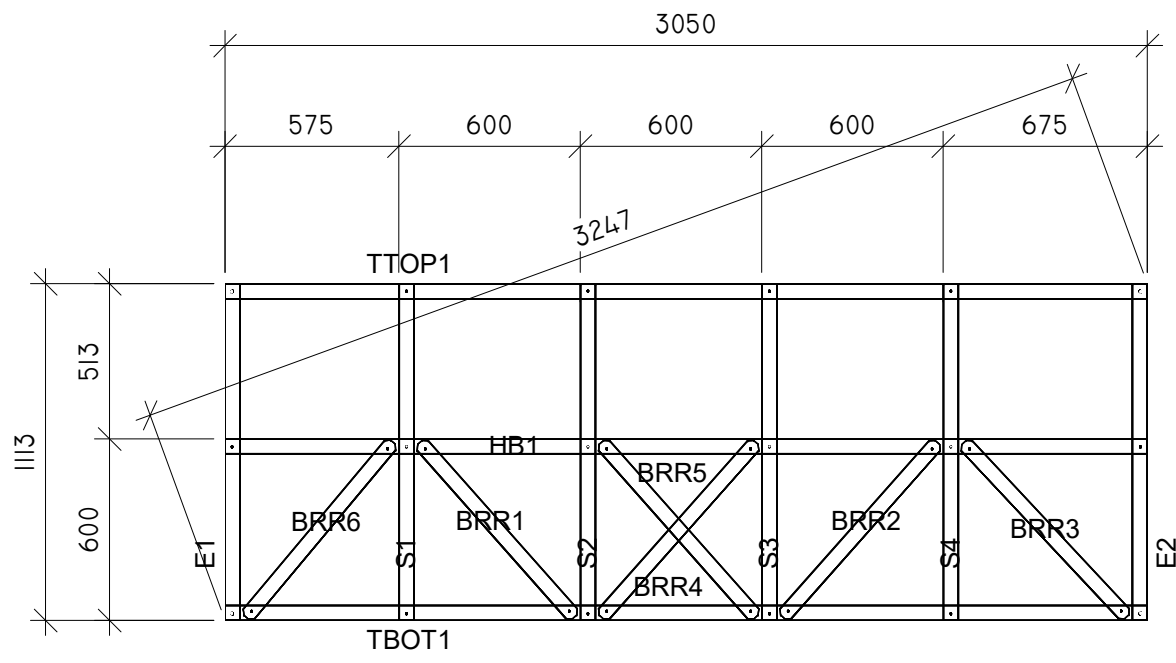


Qualif. doc. No.		Name of the project:		
39 232	PV	Building number and name, title of the document:	Issue	
A 082	PDV SA		0	
EN	Customer (builder):	Document identifier:	Sheet	Total
	E. D.		33	51

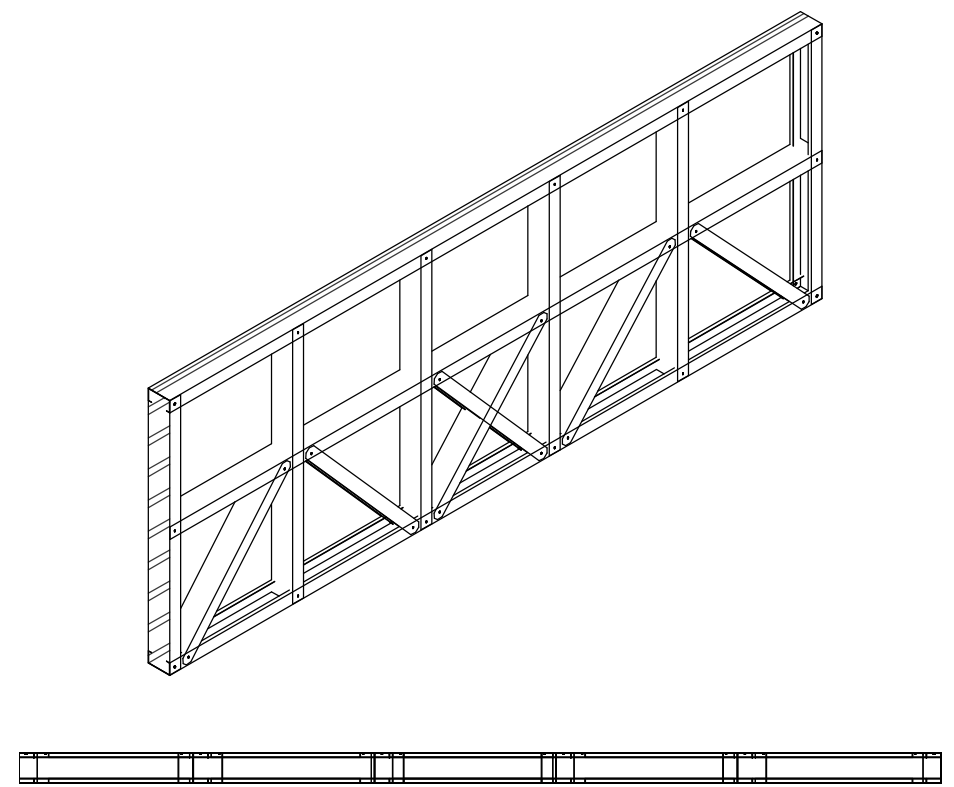


WE1 - Framing Cut List			
Pos.	Section	Length	Quant.
TTOP1	C100.50.12	875	1
TBOT1	C100.50.12	875	1
E1	C.100.50.12	4435	1
E2	C.100.50.12	4435	1
S1	C.100.50.12	4435	1
S2	C.100.50.12	4435	1
HB1	C.100.50.12	873	1
HB2	C.100.50.12	873	1
HB3	C.100.50.12	873	1
HB4	C.100.50.12	873	1
HB5	C.100.50.12	873	1
BRR1	C.100.50.12	727	1
BRR2	C.100.50.12	761	1
HB6	C.100.50.12	573	1
BRR3	C.100.50.12	607	1
BRR4	C.100.50.12	696	1
BRR5	C.100.50.12	322	1
BRR6	C.100.50.12	764	1
BRR7	C.100.50.12	765	1
BRR8	C.100.50.12	815	1
HB7	C.100.50.12	573	1
HB8	C.100.50.12	573	1
BRR9	C.100.50.12	733	1
BRR10	C.100.50.12	534	1

Qualif. doc. No.		Name of the project:		
39 232	PV	Building number and name, title of the document:	Issue	
A 082	PDV SA		01. GARAGE BUILDING WE1 M 1 : 25	0
EN	Customer (builder): E. D.	Document identifier:	Sheet	Total
			34	51

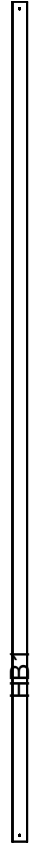


WE2 - Framing Cut List			
Pos.	Section	Length	Quant.
TTOP1	C.100.50.12	3050	1
TBOT1	C.100.50.12	3050	1
E1	C.100.50.12	1110	1
E2	C.100.50.12	1110	1
S1	C.100.50.12	1110	1
S2	C.100.50.12	1110	1
S3	C.100.50.12	1110	1
S4	C.100.50.12	1110	1
HB1	C.100.50.12	3048	1
BRR1	C.100.50.12	772	1
BRR2	C.100.50.12	772	1
BRR3	C.100.50.12	788	1
BRR4	C.100.50.12	772	1
BRR5	C.100.50.12	772	1
BRR6	C.100.50.12	755	1

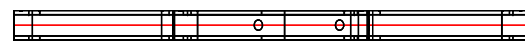
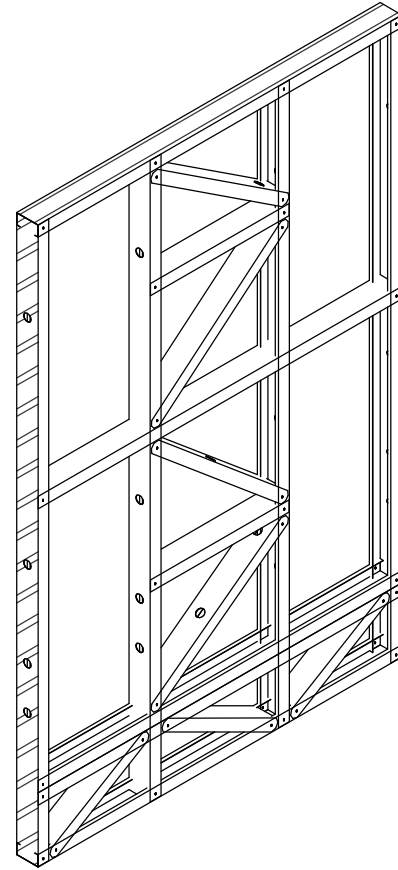
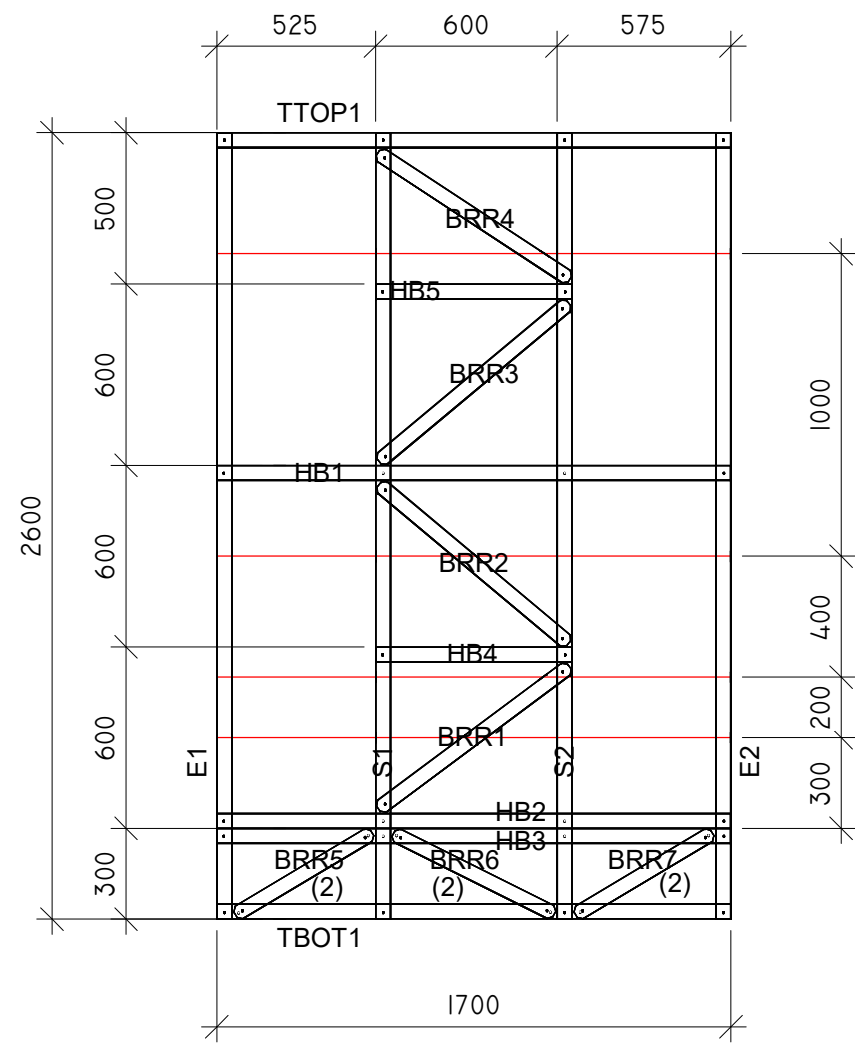


Qualif. doc. No.		Name of the project:		
39 232	PV	Building number and name, title of the document:	Issue	
A 082	PDV SA		01. GARAGE BUILDING WE2 M 1 : 25	0
EN	Customer (builder): E. D.	Document identifier:	Sheet	Total
			35	51

WE3 - Framing Cut List			
Pos.	Section	Length	Quant.
HB1	C1005015.1.2	2777	1

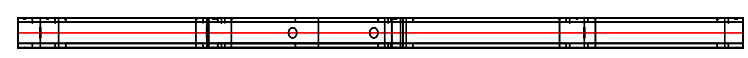
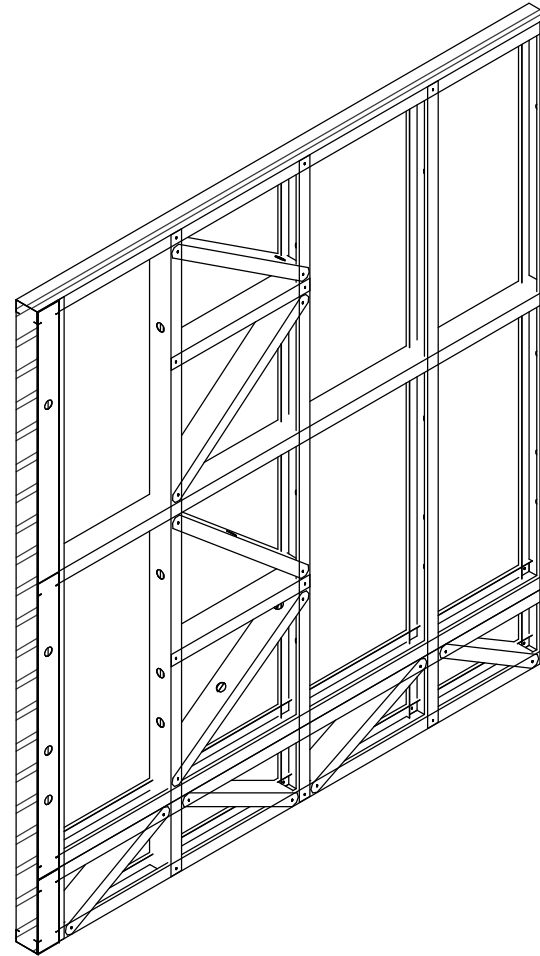
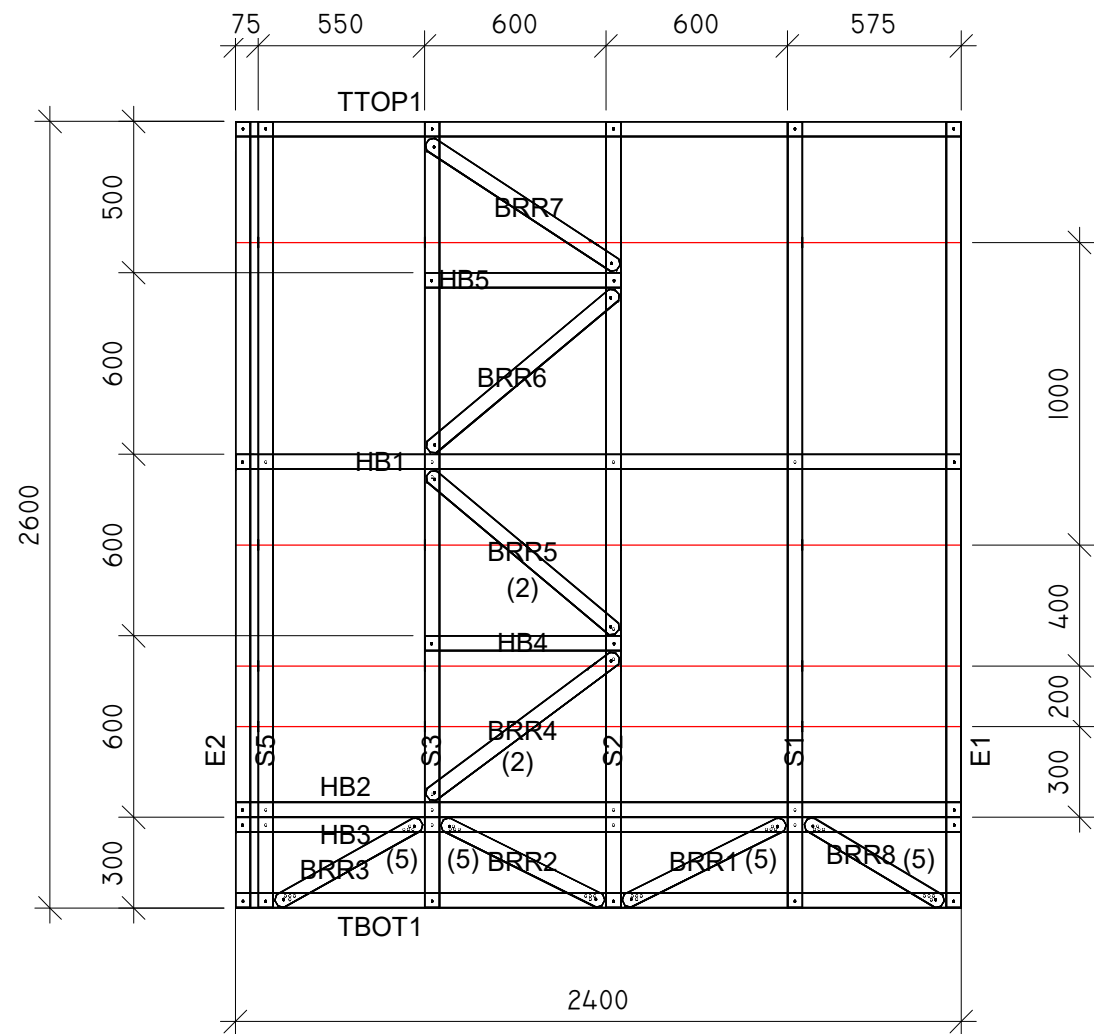


Qualif. doc. No.		Name of the project:		
39 232	PV		Building number and name, title of the document: 01. GARAGE BUILDING WE3 M 1 : 25	Issue
A 082	PDV SA			0
EN	Customer (builder): E. D.	Document identifier:	Sheet	Total
			36	51



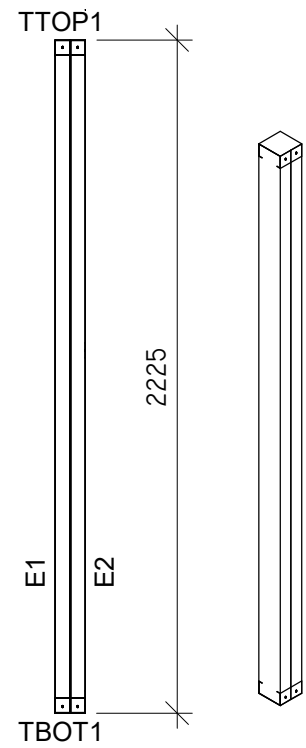
WE4 - Framing Cut List			
Pos.	Section	Length	Quant.
TTOP1	C100.50.12	1700	1
TBOT1	C100.50.12	1700	1
E1	C.100.50.12	2598	1
E2	C.100.50.12	2598	1
S1	C.100.50.12	2598	1
S2	C.100.50.12	2598	1
HB1	C.100.50.12	1698	1
HB2	C.100.50.12	1698	1
HB3	C.100.50.12	1698	1
BRR1	C.100.50.12	787	1
BRR2	C.100.50.12	818	1
HB4	C.100.50.12	648	1
BRR3	C.100.50.12	817	1
BRR4	C.100.50.12	760	1
HB5	C.100.50.12	648	1
BRR5	C.100.50.12	527	1
BRR6	C.100.50.12	595	1
BRR7	C.100.50.12	527	1

Qualif. doc. No.			Name of the project:		
	39 232	PV	Building number and name, title of the document: 01. GARAGE BUILDING WE4 M 1 : 25	Issue	
A 082	PDV SA	0			
EN	Customer (builder): E. D.		Document identifier:	Sheet	Total
				37	51



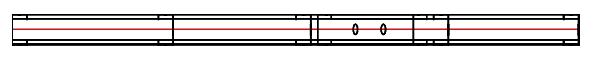
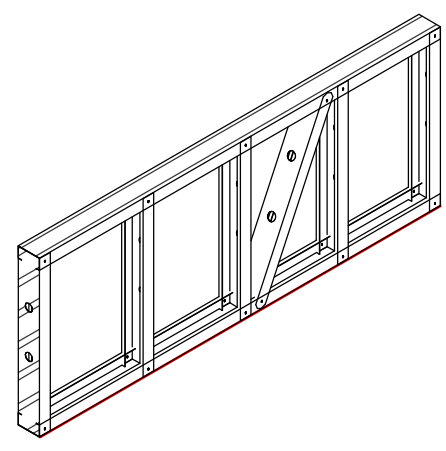
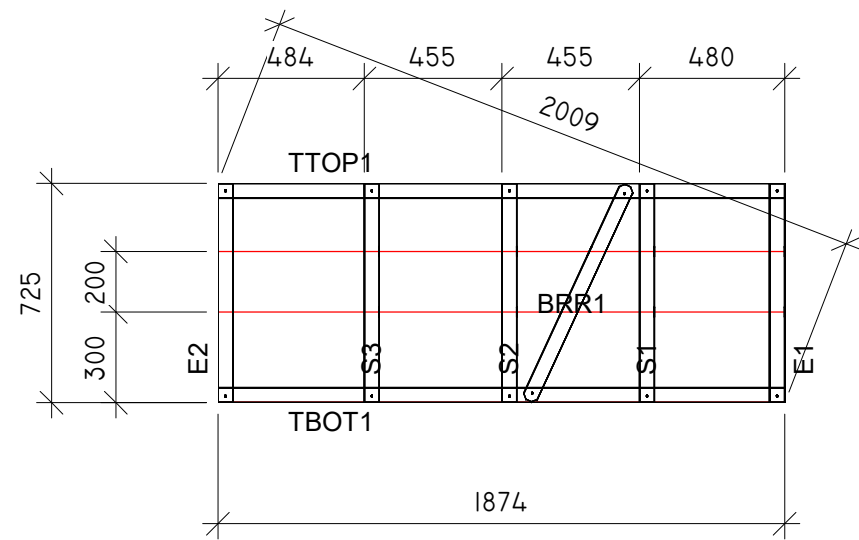
WE5 - Framing Cut List			
Pos.	Section	Length	Quant.
TTOP1	C100.50.12	2400	1
TBOT1	C100.50.12	2400	1
E1	C.100.50.12	2598	1
E2	C.100.50.12	2598	1
S1	C.100.50.12	2598	1
S2	C.100.50.12	2598	1
S3	C.100.50.12	2598	1
S5	C.100.50.12	2598	1
HB1	C.100.50.12	2398	1
HB2	C.100.50.12	2398	1
HB3	C.100.50.12	2398	1
BRR1	C.100.50.12	595	1
BRR2	C.100.50.12	595	1
BRR3	C.100.50.12	549	1
BRR4	C.100.50.12	783	1
BRR5	C.100.50.12	814	1
HB4	C.100.50.12	648	1
BRR6	C.100.50.12	813	1
BRR7	C.100.50.12	756	1
HB5	C.100.50.12	648	1
BRR8	C.100.50.12	527	1

Qualif. doc. No.	Name of the project:		
39 232	PV	Building number and name, title of the document:	Issue
A 082	PDV SA		0
EN	Customer (builder):	Document identifier:	Sheet
	E. D.		Total
			38
			51



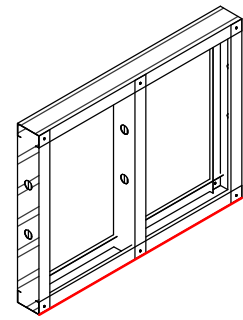
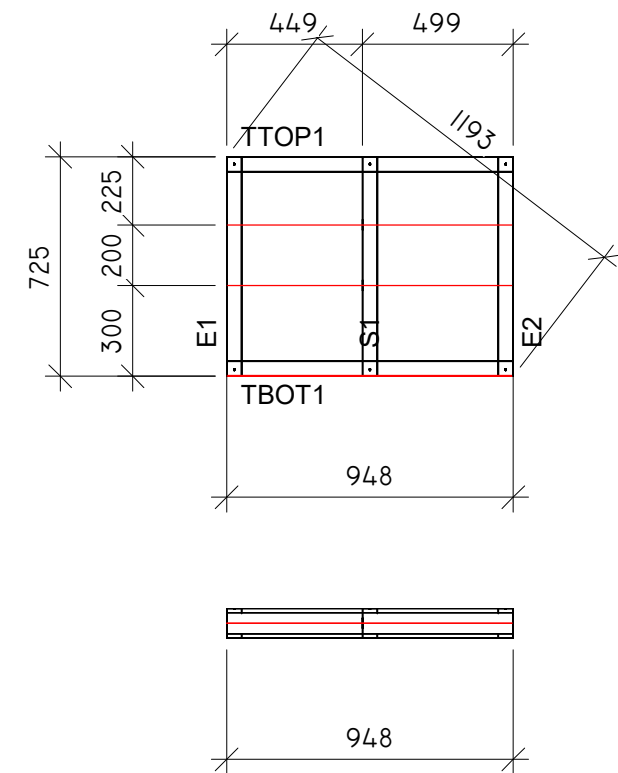
WE6 - Framing Cut List			
Pos.	Section	Length	Quant.
TTOP1	C100.50.12	100	1
TBOT1	C100.50.12	100	1
E1	C.100.50.12	2223	1
E2	C.100.50.12	2223	1

Qualif. doc. No.		Name of the project:		
39 232	PV		Building number and name, title of the document: 01. GARAGE BUILDING WE6 M 1 : 25	Issue
A 082	PDV SA			0
EN	Customer (builder): E. D.	Document identifier:	Sheet	Total
			39	51



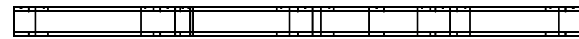
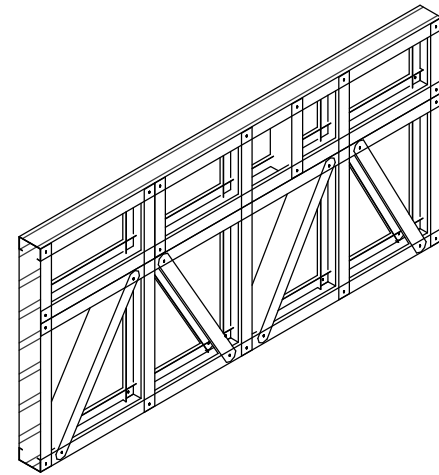
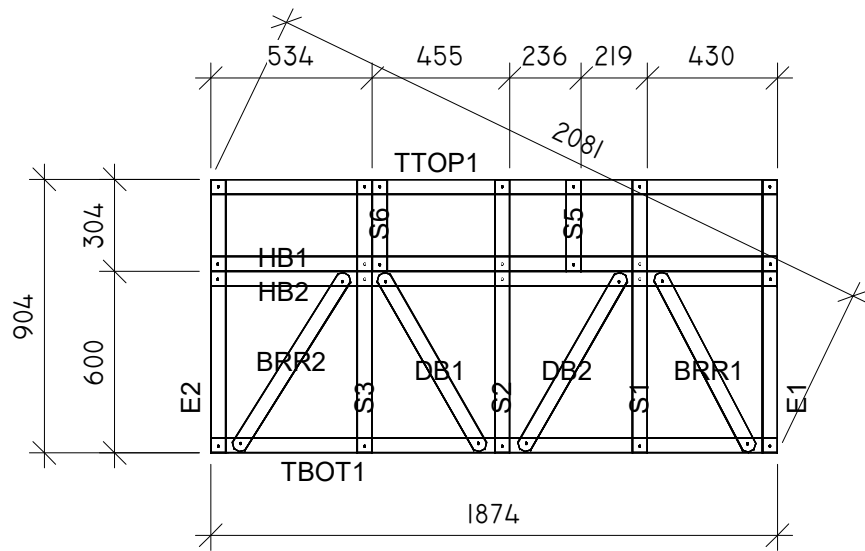
WE7 - Framing Cut List			
Pos.	Section	Length	Quant.
TTOP1	C100.50.12	1874	1
TBOT1	C100.50.12	1874	1
E1	C.100.50.12	723	1
E2	C.100.50.12	723	1
S1	C.100.50.12	723	1
S2	C.100.50.12	723	1
S3	C.100.50.12	723	1
BRR1	C.100.50.12	782	1

Qualif. doc. No.		Name of the project:		
39 232	PV		Building number and name, title of the document: 01. GARAGE BUILDING WE7 M 1 : 25	Issue
A 082	PDV SA			0
EN	Customer (builder): E. D.	Document identifier:	Sheet	Total
			40	51



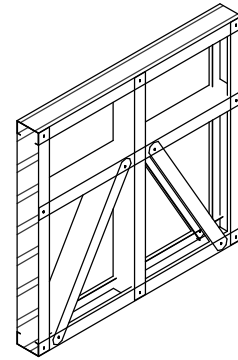
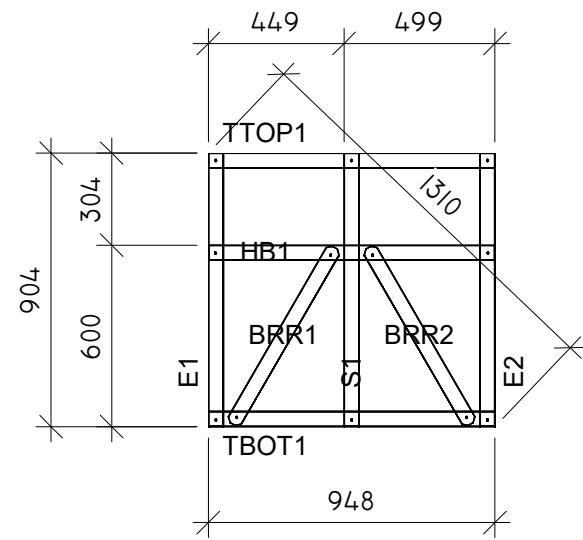
WE8 - Framing Cut List			
Pos.	Section	Length	Quant.
TTOP1	C100.50.12	948	1
TBOT1	C100.50.12	948	1
E1	C.100.50.12	723	1
E2	C.100.50.12	723	1
S1	C.100.50.12	723	1

Qualif. doc. No.		Name of the project:		
39 232	PV		Building number and name, title of the document: 01. GARAGE BUILDING WE8 M 1 : 25	Issue
A 082	PDV SA			0
EN	Customer (builder): E. D.	Document identifier:	Sheet	Total
			41	51



WE9 - Framing Cut List			
Pos.	Section	Length	Quant.
TTOP1	C100.50.12	1874	1
TBOT1	C100.50.12	1874	1
E1	C.100.50.12	902	1
E2	C.100.50.12	902	1
S1	C.100.50.12	902	1
S2	C.100.50.12	902	1
S3	C.100.50.12	902	1
S5	C.100.50.12	302	1
S6	C.100.50.12	302	1
HB1	C.100.50.12	1872	1
HB2	C.100.50.12	1872	1
DB1	C.100.50.12	671	1
DB2	C.100.50.12	671	1
BRR1	C.100.50.12	661	1
BRR2	C.100.50.12	686	1

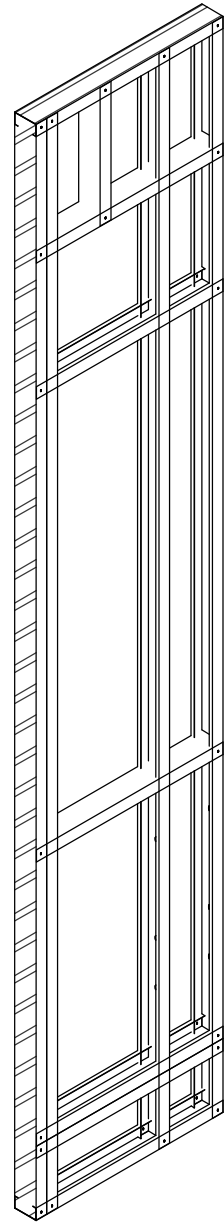
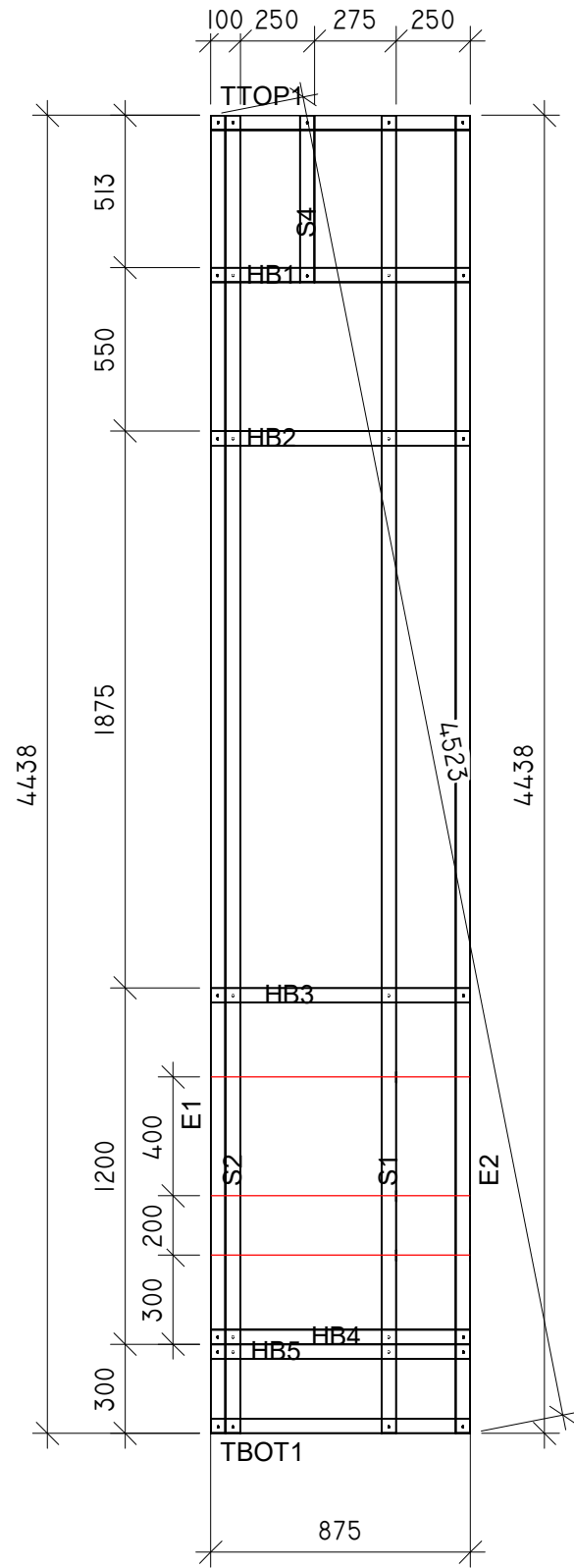
Qualif. doc. No.		Name of the project:		
39 232	PV		Building number and name, title of the document: 01. GARAGE BUILDING WE9 M 1 : 25	Issue
A 082	PDV SA			0
EN	Customer (builder): E. D.	Document identifier:	Sheet	Total
			42	51



WE10 - Framing Cut List

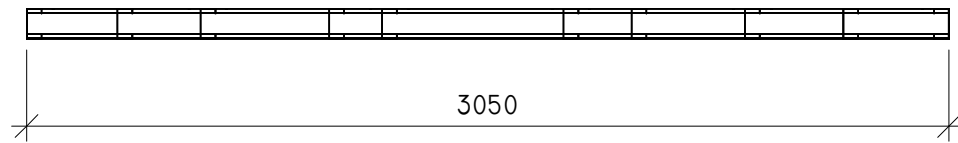
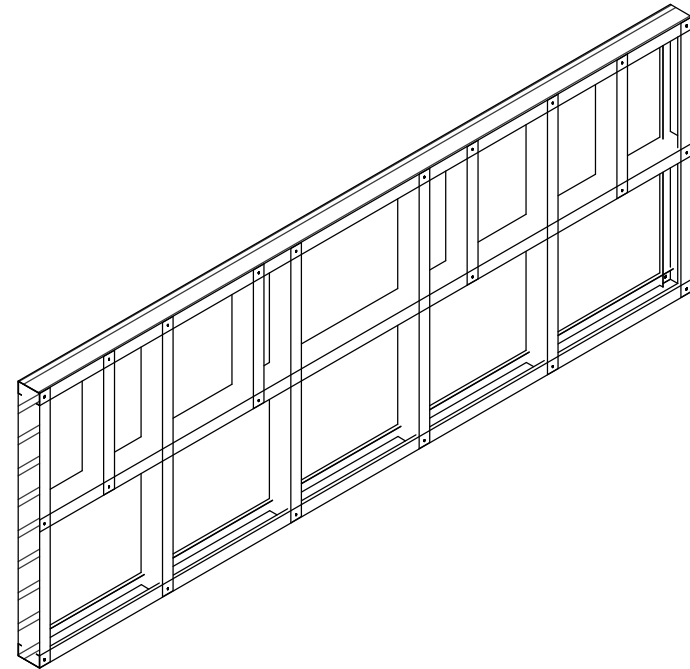
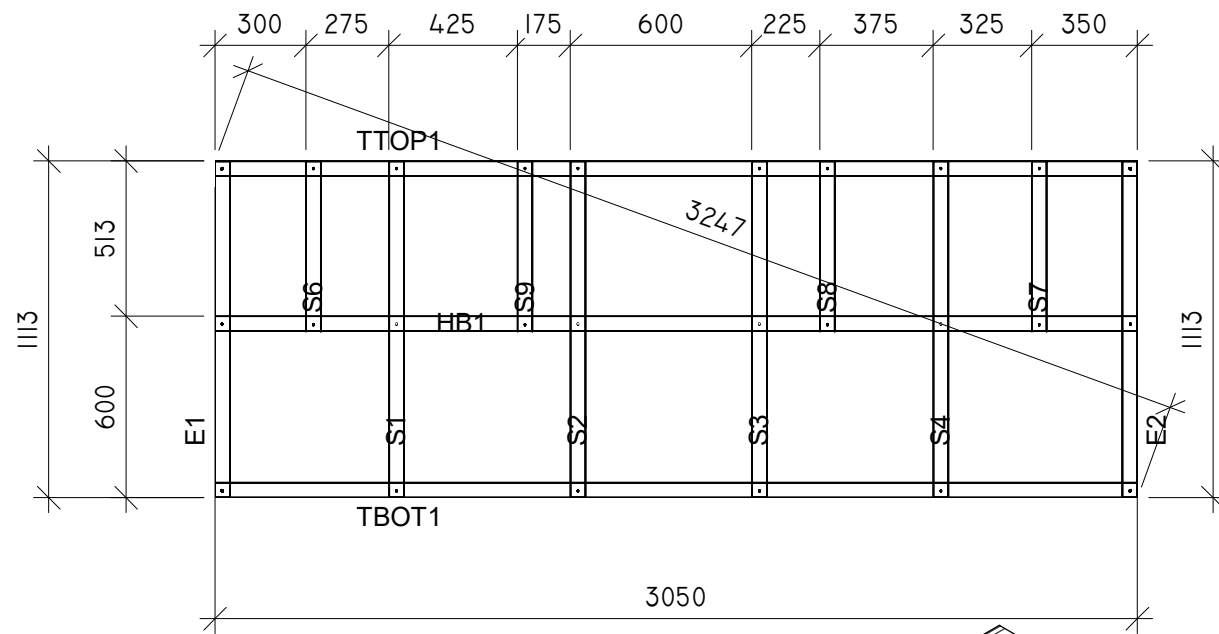
Pos.	Section	Length	Quant.
TTOP1	C100.50.12	948	1
TBOT1	C100.50.12	948	1
E1	C.100.50.12	902	1
E2	C.100.50.12	902	1
S1	C.100.50.12	902	1
HB1	C.100.50.12	946	1
BRR1	C.100.50.12	674	1
BRR2	C.100.50.12	674	1

Qualif. doc. No.		Name of the project:		
39 232	PV		Building number and name, title of the document: 01. GARAGE BUILDING WE10 M 1 : 25	Issue
A 082	PDV SA			0
EN	Customer (builder): E. D.	Document identifier:	Sheet	Total
			43	51



W11 - Framing Cut List			
Pos.	Section	Length	Quant.
TTOP1	C100.50.12	875	1
TBOT1	C100.50.12	875	1
E1	C.100.50.12	4435	1
E2	C.100.50.12	4435	1
S1	C.100.50.12	4435	1
S2	C.100.50.12	4435	1
S4	C.100.50.12	560	1
HB1	C.100.50.12	873	1
HB2	C.100.50.12	873	1
HB3	C.100.50.12	873	1
HB4	C.100.50.12	873	1
HB5	C.100.50.12	873	1

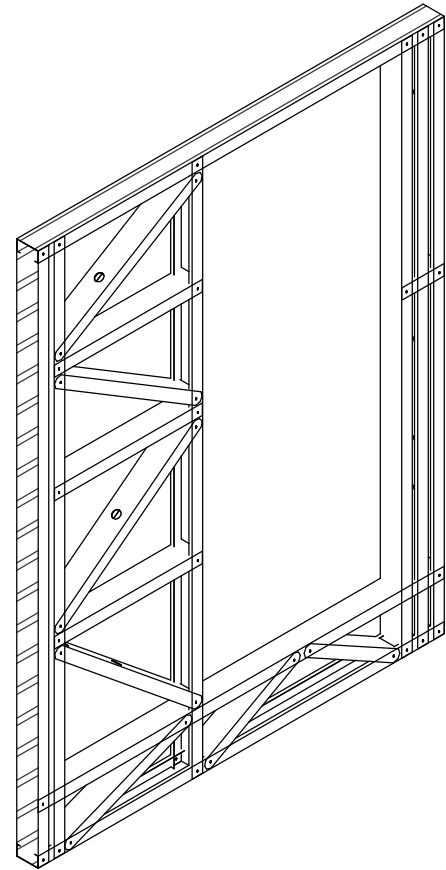
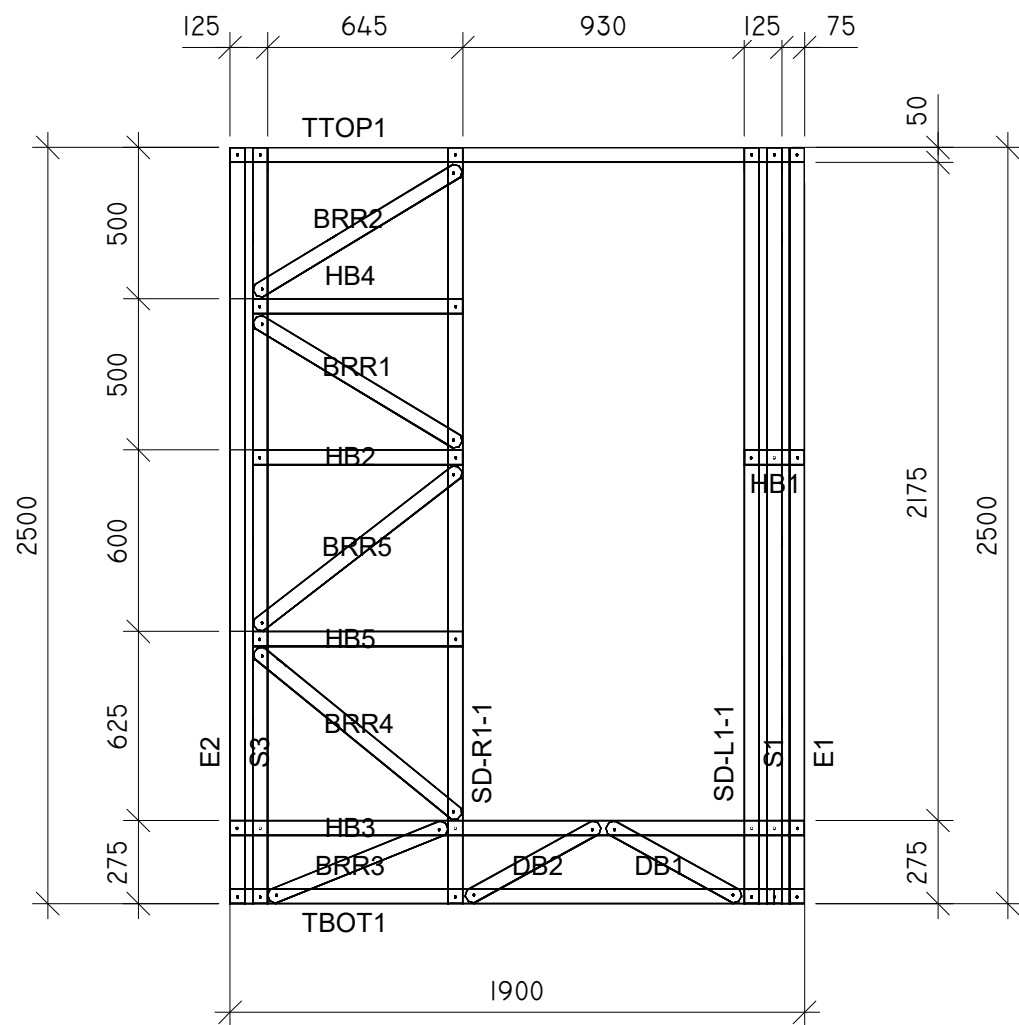
Qualif. doc. No.		Name of the project:		
39 232	PV	Building number and name, title of the document:	Issue	
A 082	PDV SA		01. GARAGE BUILDING W11 M 1 : 25	0
EN	Customer (builder): E. D.	Document identifier:	Sheet	Total
			44	51



W12 - Framing Cut List

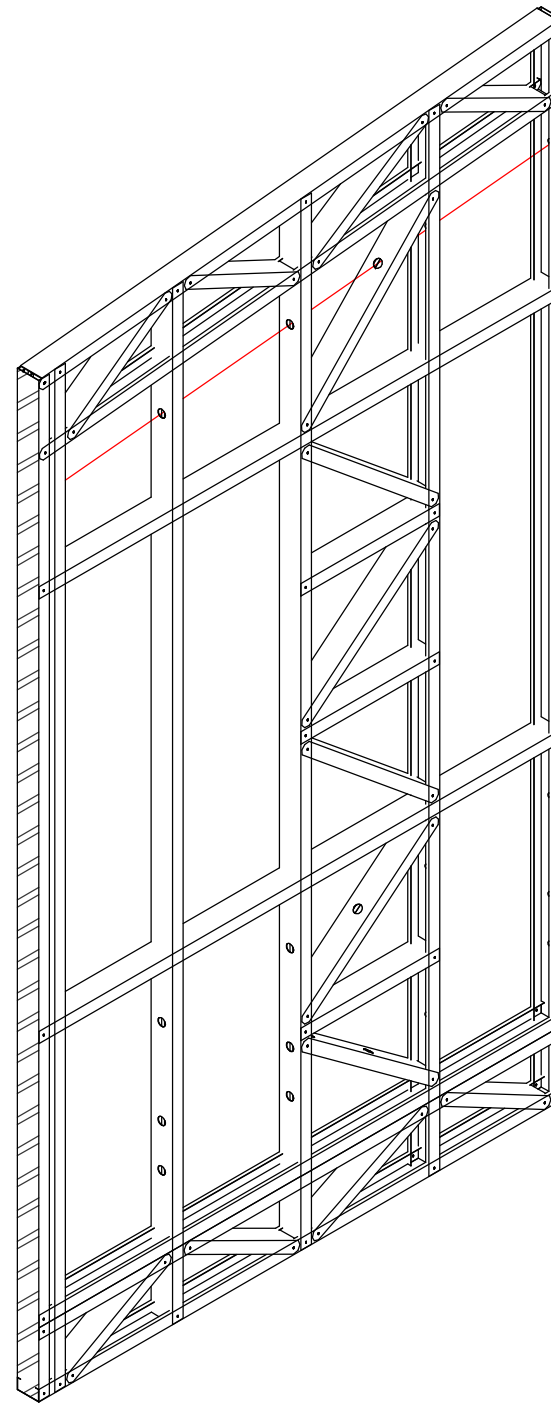
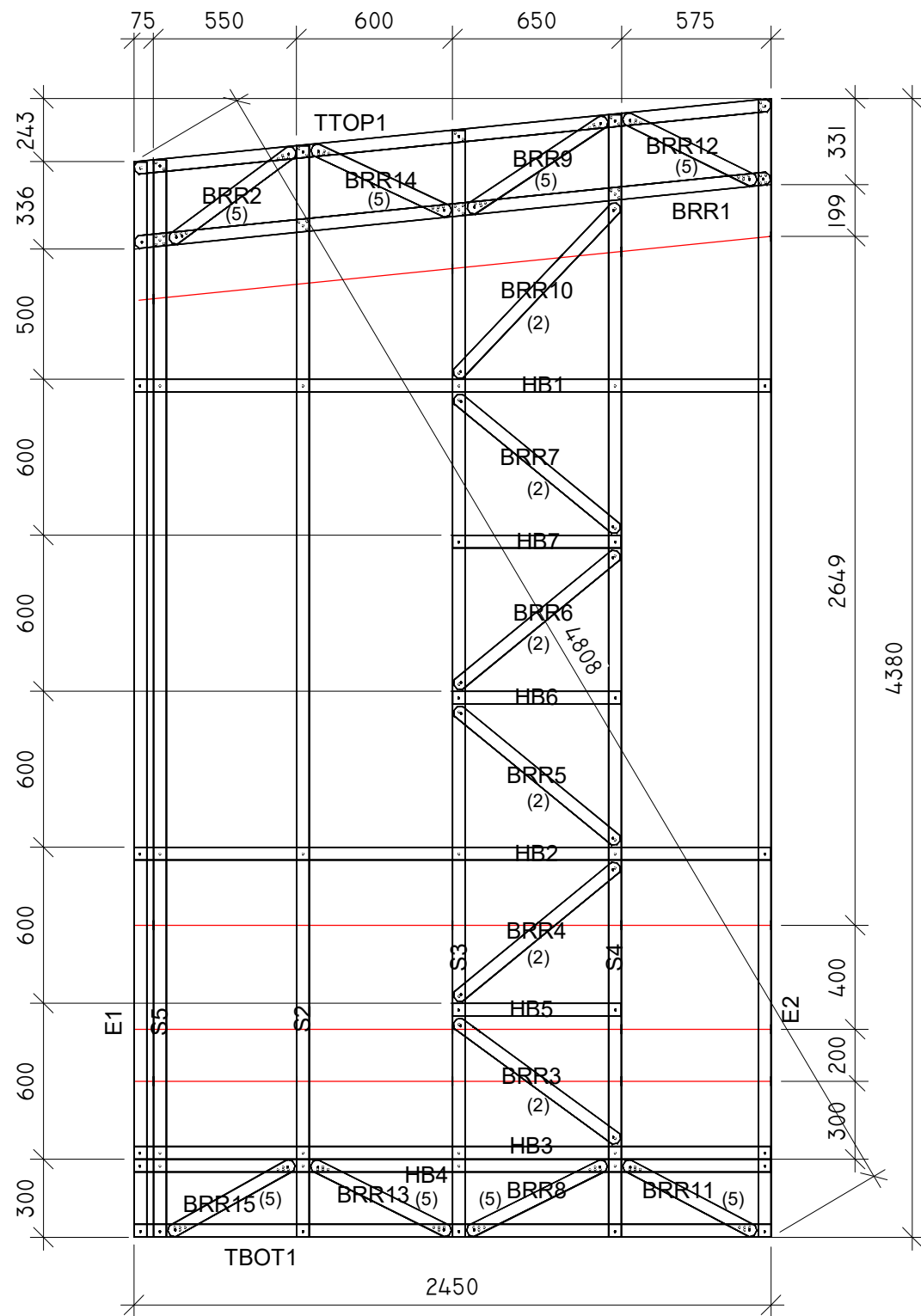
Pos.	Section	Length	Quant.
TTOP1	C.100.50.12	3050	1
TBOT1	C.100.50.12	3050	1
E1	C.100.50.12	1110	1
E2	C.100.50.12	1110	1
S1	C.100.50.12	1110	1
S2	C.100.50.12	1110	1
S3	C.100.50.12	1110	1
S4	C.100.50.12	1110	1
S6	C.100.50.12	560	1
S7	C.100.50.12	560	1
S8	C.100.50.12	560	1
S9	C.100.50.12	560	1
HB1	C.100.50.12	3048	1

Qualif. doc. No.		Name of the project:		
39 232	PV	Building number and name, title of the document:	Issue	
A 082	PDV SA		01. GARAGE BUILDING W12 M 1 : 25	0
EN	Customer (builder): E. D.	Document identifier:	Sheet	Total
			45	51



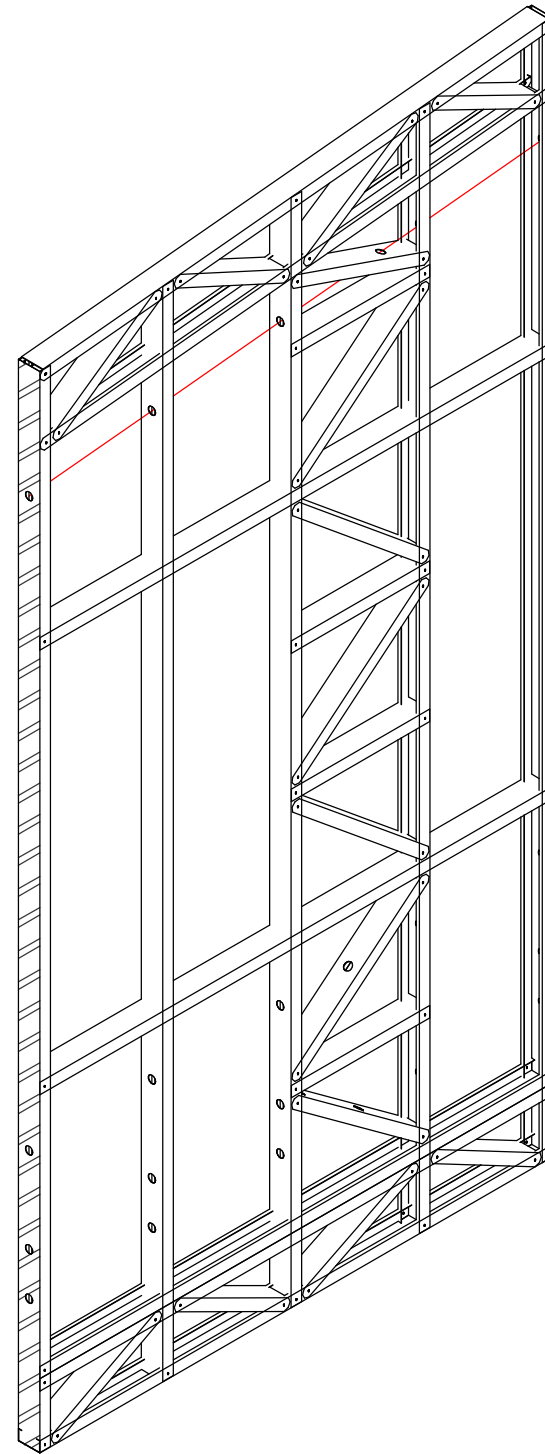
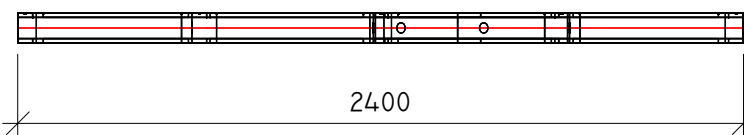
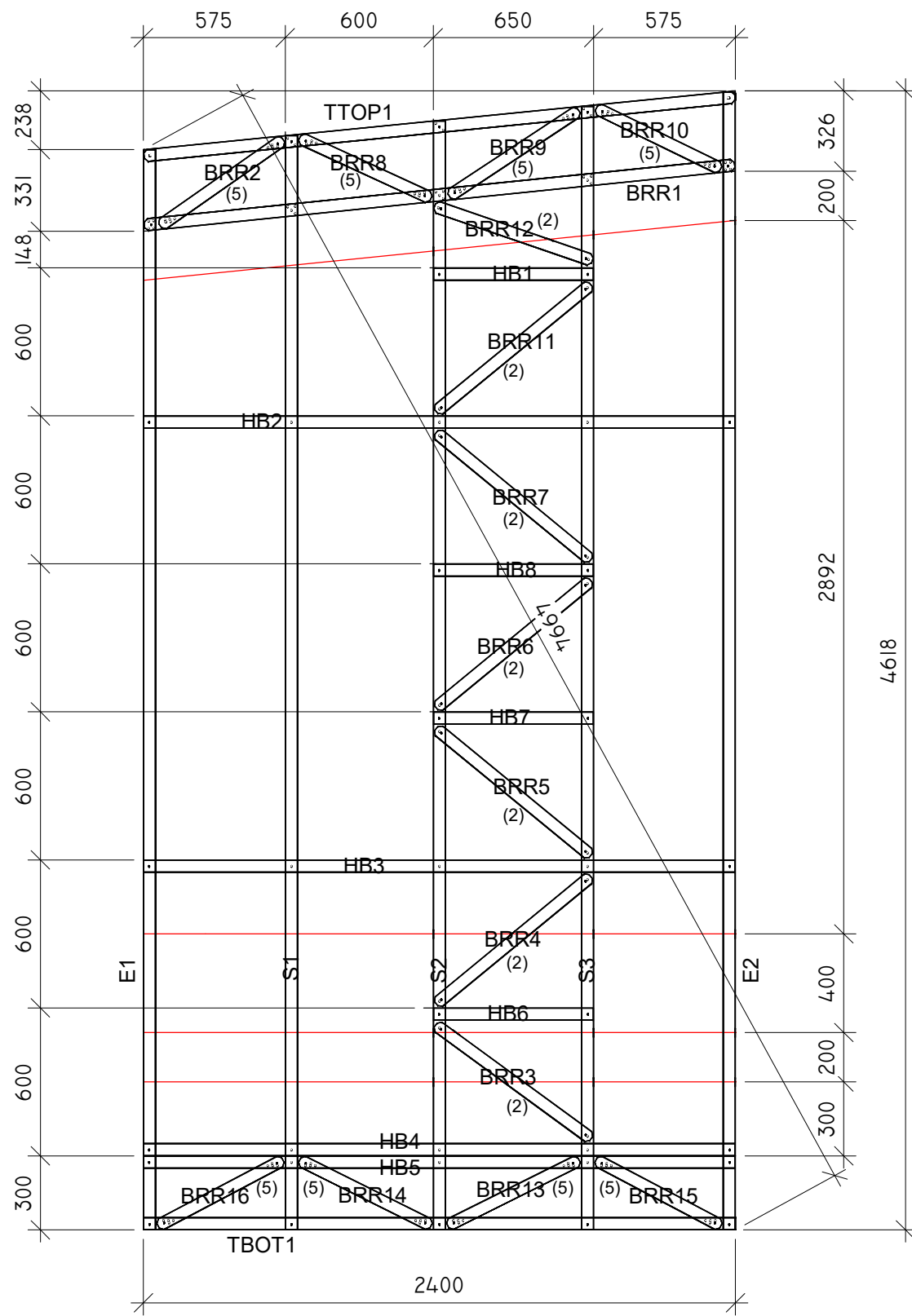
WI3 - Framing Cut List			
Pos.	Section	Length	Quant.
TTOP1	C100.50.12	1900	1
TBOT1	C100.50.12	1900	1
SD-L1-1	C.100.50.12	2498	1
SD-R1-1	C.100.50.12	2498	1
E1	C.100.50.12	2498	1
E2	C.100.50.12	2498	1
S1	C.100.50.12	2498	1
S3	C.100.50.12	2498	1
HB1	C.100.50.12	198	1
HB2	C.100.50.12	693	1
HB3	C.100.50.12	1898	1
DB1	C.100.50.12	501	1
DB2	C.100.50.12	501	1
BRR1	C.100.50.12	794	1
BRR2	C.100.50.12	795	1
HB4	C.100.50.12	693	1
BRR3	C.100.50.12	634	1
BRR4	C.100.50.12	870	1
BRR5	C.100.50.12	855	1
HB5	C.100.50.12	693	1

Qualif. doc. No.			Name of the project:		
	39 232	PV	Building number and name, title of the document: 01. GARAGE BUILDING WI3 M 1 : 25		
A 082	PDV SA	Issue 0			
EN	Customer (builder): E. D.		Document identifier:	Sheet 46	Total 51



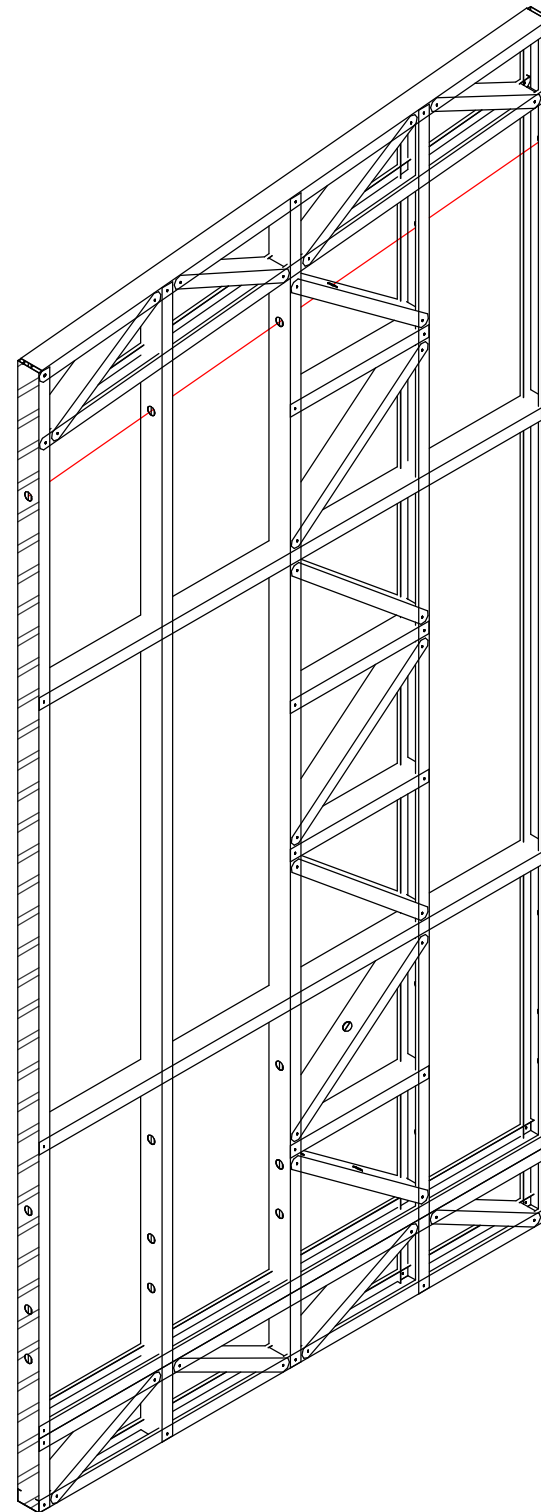
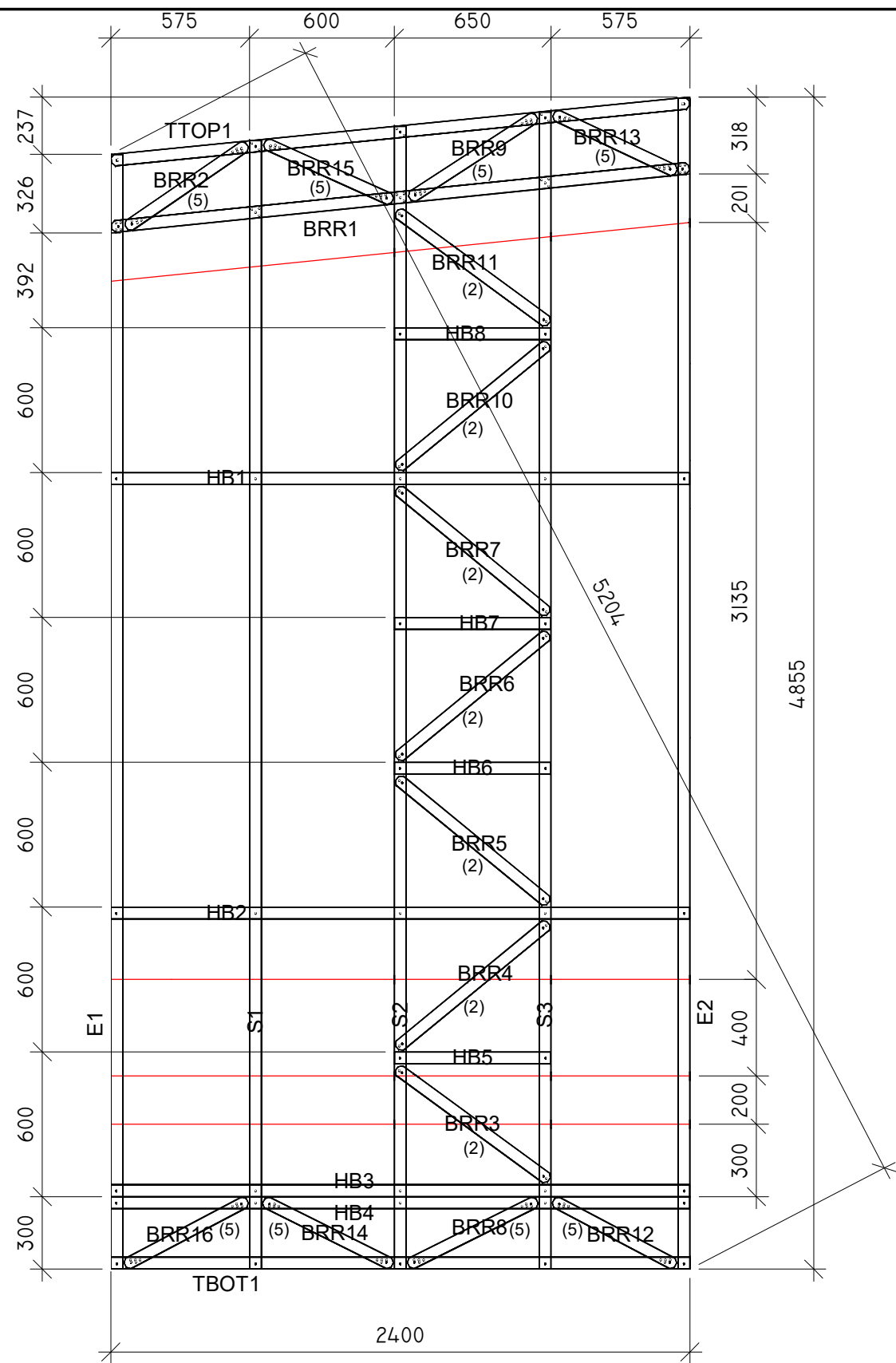
WS1 - Framing Cut List			
Pos.	Section	Length	Quant.
TTOP1	C.100.50.12	2457	1
TBOT1	C100.50.12	2450	1
E1	C.100.50.12	4134	1
E2	C.100.50.12	4372	1
S2	C.100.50.12	4196	1
S3	C.100.50.12	4256	1
S4	C.100.50.12	4315	1
S5	C.100.50.12	4141	1
HB1	C.100.50.12	2448	1
HB2	C.100.50.12	2448	1
HB3	C.100.50.12	2448	1
HB4	C.100.50.12	2448	1
BRR1	C.100.50.12	2455	1
BRR2	C.100.50.12	592	1
BRR3	C.100.50.12	781	1
BRR4	C.100.50.12	812	1
HB5	C.100.50.12	648	1
BRR5	C.100.50.12	811	1
BRR6	C.100.50.12	812	1
BRR7	C.100.50.12	812	1
HB6	C.100.50.12	648	1
HB7	C.100.50.12	648	1
BRR8	C.100.50.12	595	1
BRR9	C.100.50.12	636	1
BRR10	C.100.50.12	909	1
BRR11	C.100.50.12	572	1
BRR12	C.100.50.12	566	1
BRR13	C.100.50.12	595	1
BRR14	C.100.50.12	588	1
BRR15	C.100.50.12	549	1

Qualif. doc. No.			Name of the project:	
39 232	PV			Issue
A 082	PDV SA	Building number and name, title of the document:		
		01. GARAGE BUILDING		0
		WS1 M 1 : 25		
EN	Customer (builder):	Document identifier:		Sheet
	E. D.			Total
				47
				51



WS2 - Framing Cut List			
Pos.	Section	Length	Quant.
TTOP1	C.100.50.12	2407	1
TBOT1	C100.50.12	2400	1
E1	C.100.50.12	4377	1
E2	C.100.50.12	4611	1
S1	C.100.50.12	4434	1
S2	C.100.50.12	4494	1
S3	C.100.50.12	4553	1
HB1	C.100.50.12	648	1
HB2	C.100.50.12	2398	1
HB3	C.100.50.12	2398	1
HB4	C.100.50.12	2398	1
HB5	C.100.50.12	2398	1
BRR1	C.100.50.12	2405	1
BRR2	C.100.50.12	608	1
BRR3	C.100.50.12	781	1
BRR4	C.100.50.12	812	1
HB6	C.100.50.12	648	1
BRR5	C.100.50.12	811	1
BRR6	C.100.50.12	812	1
BRR7	C.100.50.12	812	1
HB7	C.100.50.12	648	1
HB8	C.100.50.12	648	1
BRR8	C.100.50.12	585	1
BRR9	C.100.50.12	560	1
BRR10	C.100.50.12	629	1
BRR11	C.100.50.12	811	1
BRR12	C.100.50.12	677	1
BRR13	C.100.50.12	595	1
BRR14	C.100.50.12	595	1
BRR15	C.100.50.12	572	1
BRR16	C.100.50.12	572	1

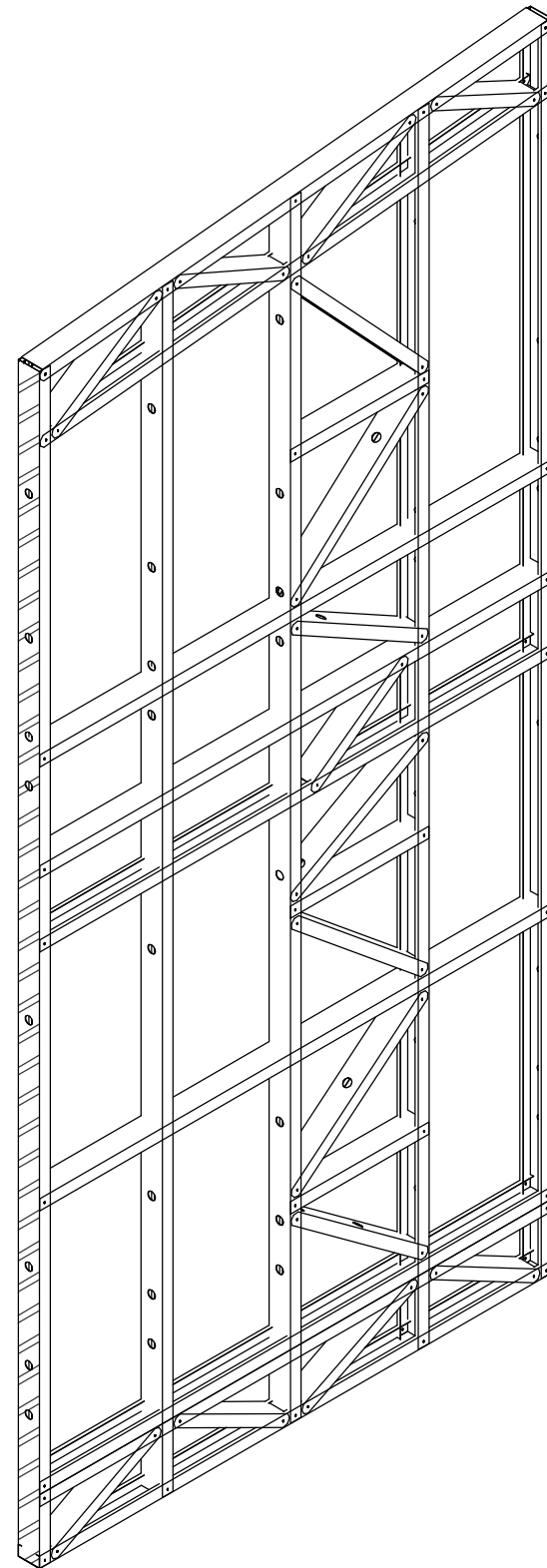
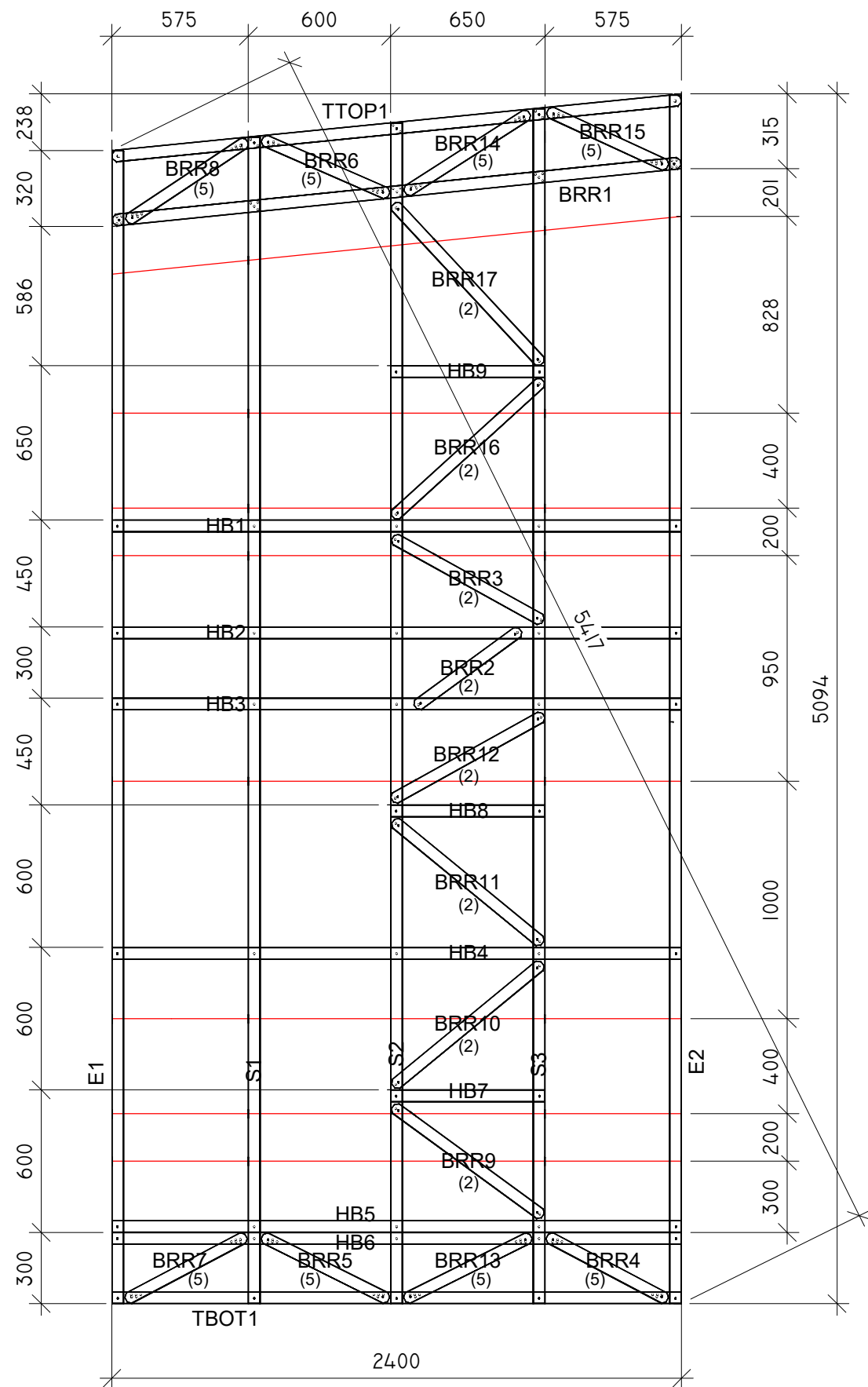
Qualif. doc. No.	Name of the project:		
39 232	PV	Building number and name, title of the document:	Issue
A 082	PDV SA		0
EN	Customer (builder):	Document identifier:	Sheet
	E. D.		48
			Total
			51



WS3 - Framing Cut List			
Pos.	Section	Length	Quant.
TTOP1	C.100.50.12	2407	1
TBOT1	C100.50.12	2400	1
E1	C.100.50.12	4616	1
E2	C.100.50.12	4849	1
S1	C.100.50.12	4673	1
S2	C.100.50.12	4732	1
S3	C.100.50.12	4792	1
HB1	C.100.50.12	2398	1
HB2	C.100.50.12	2398	1
HB3	C.100.50.12	2398	1
HB4	C.100.50.12	2398	1
BRR1	C.100.50.12	2405	1
BRR2	C.100.50.12	606	1
BRR3	C.100.50.12	781	1
BRR4	C.100.50.12	812	1
HB5	C.100.50.12	648	1
BRR5	C.100.50.12	811	1
BRR6	C.100.50.12	812	1
BRR7	C.100.50.12	812	1
HB6	C.100.50.12	648	1
HB7	C.100.50.12	648	1
BRR8	C.100.50.12	595	1
BRR9	C.100.50.12	625	1
BRR10	C.100.50.12	811	1
BRR11	C.100.50.12	782	1
HB8	C.100.50.12	648	1
BRR12	C.100.50.12	572	1
BRR13	C.100.50.12	561	1
BRR14	C.100.50.12	595	1
BRR15	C.100.50.12	582	1
BRR16	C.100.50.12	572	1

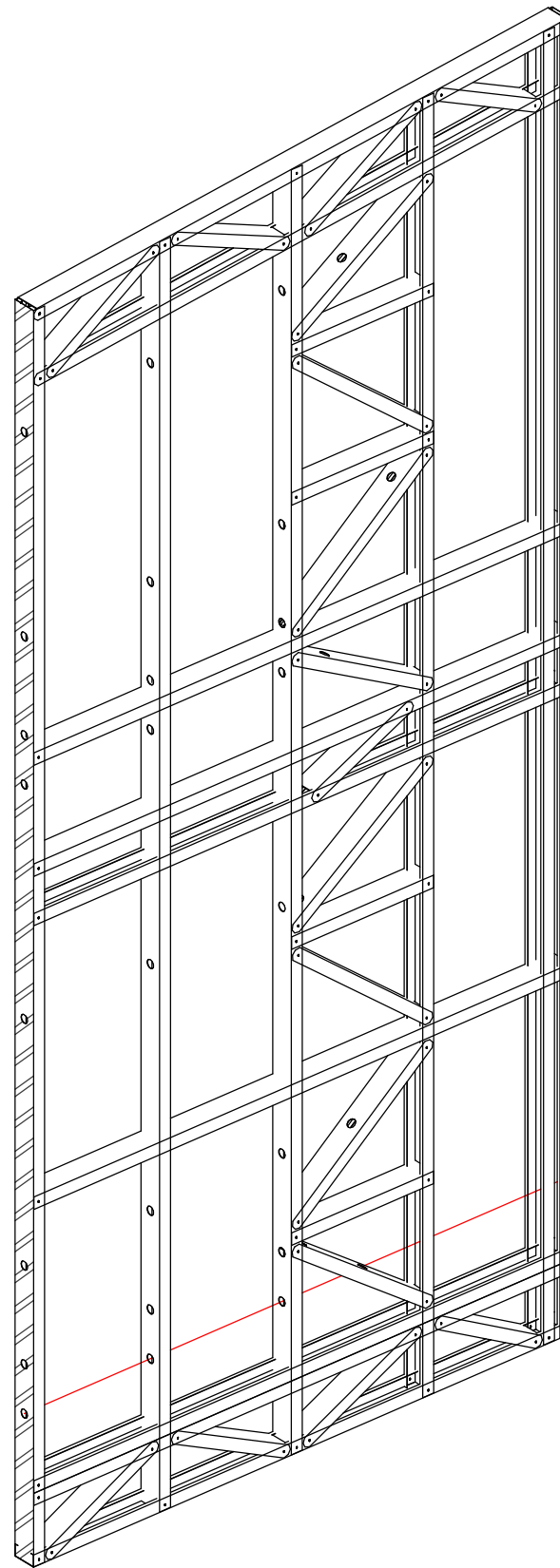
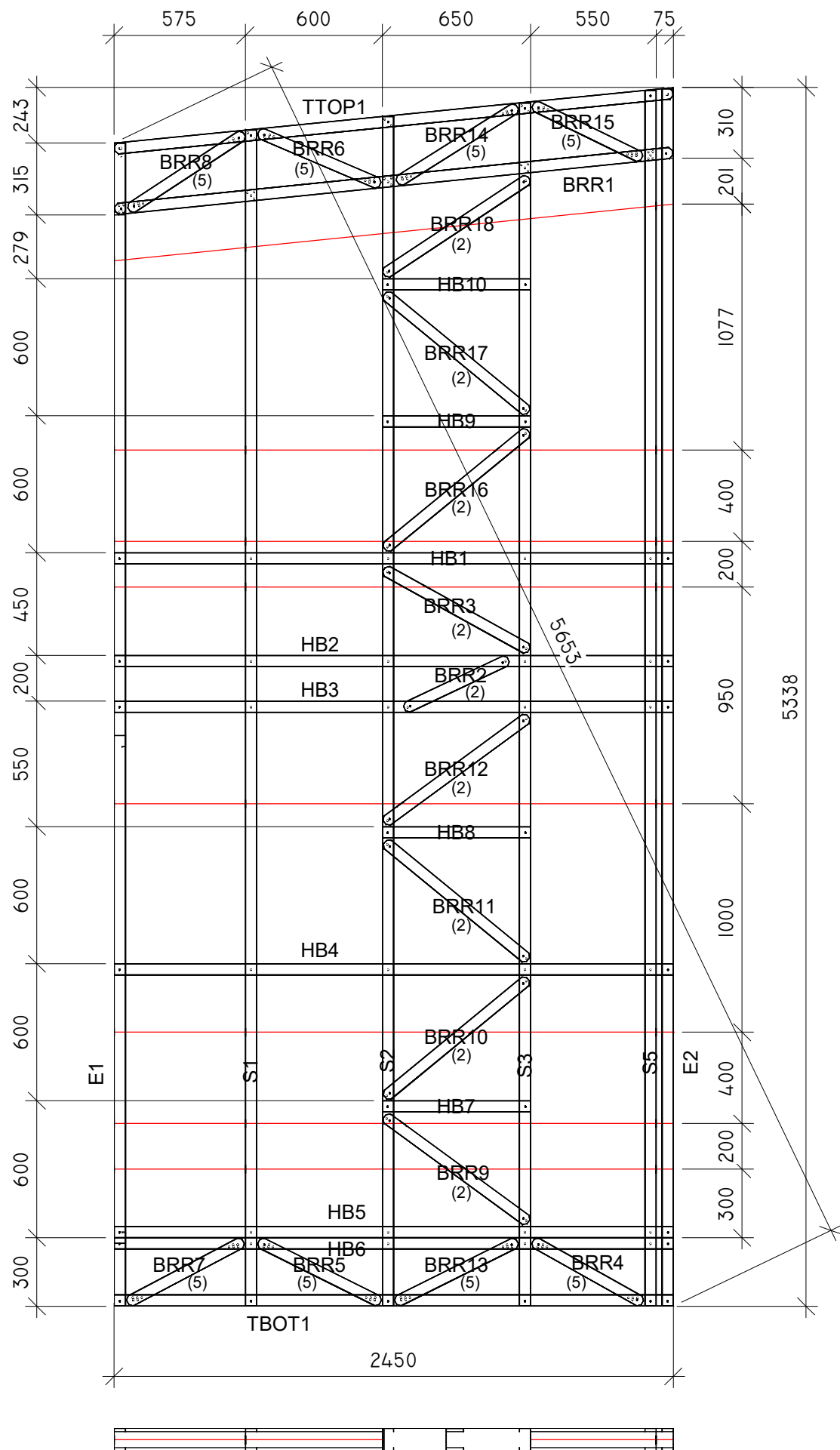


Qualif. doc. No.	Name of the project:		
39 232	PV	Building number and name, title of the document:	Issue
A 082	PDV SA		0
EN	Customer (builder):	Document identifier:	Sheet Total
	E. D.		49 51



WS4 - Framing Cut List			
Pos.	Section	Length	Quant.
TTOP1	C.100.50.12	2407	1
TBOT1	C100.50.12	2400	1
E1	C.100.50.12	4854	1
E2	C.100.50.12	5087	1
S1	C.100.50.12	4911	1
S2	C.100.50.12	4970	1
S3	C.100.50.12	5030	1
HB1	C.100.50.12	2398	1
HB2	C.100.50.12	2398	1
HB3	C.100.50.12	2398	1
HB4	C.100.50.12	2398	1
HB5	C.100.50.12	2398	1
HB6	C.100.50.12	2398	1
BRR1	C.100.50.12	2405	1
BRR2	C.100.50.12	547	1
BRR3	C.100.50.12	724	1
BRR4	C.100.50.12	572	1
BRR5	C.100.50.12	595	1
BRR6	C.100.50.12	582	1
BRR7	C.100.50.12	572	1
BRR8	C.100.50.12	607	1
BRR9	C.100.50.12	781	1
BRR10	C.100.50.12	812	1
HB7	C.100.50.12	648	1
BRR11	C.100.50.12	811	1
BRR12	C.100.50.12	730	1
HB8	C.100.50.12	648	1
BRR13	C.100.50.12	595	1
BRR14	C.100.50.12	620	1
BRR15	C.100.50.12	557	1
BRR16	C.100.50.12	853	1
BRR17	C.100.50.12	917	1
HB9	C.100.50.12	648	1

Qualif. doc. No.	Name of the project:		
39 232	PV	Building number and name, title of the document:	Issue
A 082	PDV SA		0
EN	Customer (builder):	Document identifier:	Sheet Total
	E. D.		50 51



WS5 - Framing Cut List			
Pos.	Section	Length	Quant.
TTOP1	C.100.50.12	2457	1
TBOT1	C100.50.12	2450	1
E1	C.100.50.12	5092	1
E2	C.100.50.12	5330	1
S1	C.100.50.12	5149	1
S2	C.100.50.12	5209	1
S3	C.100.50.12	5268	1
S5	C.100.50.12	5323	1
HB1	C.100.50.12	2448	1
HB2	C.100.50.12	2448	1
HB3	C.100.50.12	2448	1
HB4	C.100.50.12	2448	1
HB5	C.100.50.12	2448	1
HB6	C.100.50.12	2448	1
BRR1	C.100.50.12	2455	1
BRR2	C.100.50.12	502	1
BRR3	C.100.50.12	726	1
BRR4	C.100.50.12	549	1
BRR5	C.100.50.12	595	1
BRR6	C.100.50.12	579	1
BRR7	C.100.50.12	572	1
BRR8	C.100.50.12	602	1
BRR9	C.100.50.12	781	1
BRR10	C.100.50.12	812	1
HB7	C.100.50.12	648	1
BRR11	C.100.50.12	811	1
BRR12	C.100.50.12	782	1
HB8	C.100.50.12	648	1
BRR13	C.100.50.12	595	1
BRR14	C.100.50.12	619	1
BRR15	C.100.50.12	530	1
BRR16	C.100.50.12	813	1
BRR17	C.100.50.12	814	1
BRR18	C.100.50.12	762	1
HB9	C.100.50.12	648	1
HB10	C.100.50.12	648	1

Qualif. doc. No.	Name of the project:		
39 232	PV	Building number and name, title of the document:	
A 082	PDV SA	01. GARAGE BUILDING WS5 M 1 : 25	
EN	Customer (builder):	Document identifier:	Issue
	E. D.		0
			Sheet
			51
			Total
			51