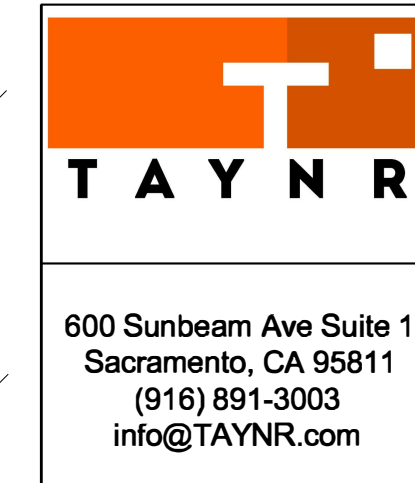
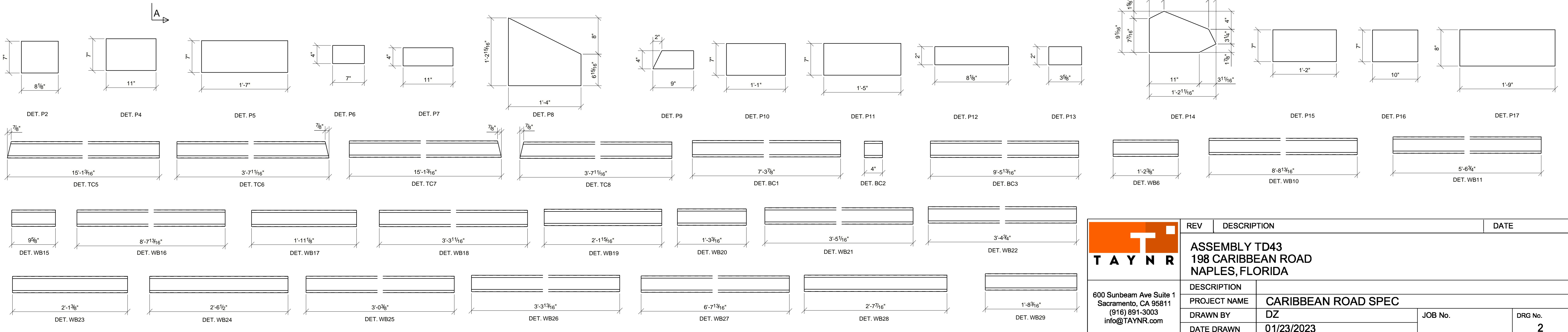
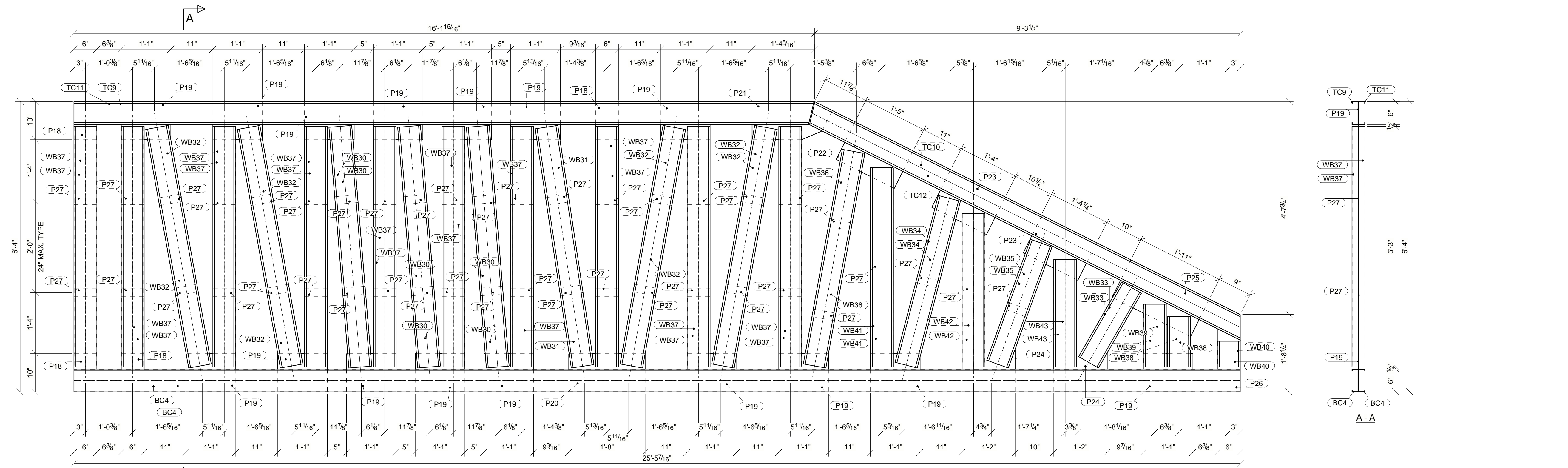


BILL OF MATERIAL

MARK	QTY	DESCRIPTION	LENGTH	WEIGHT	REMARKS
TD43	1	Truss			
BC1	2	362S162-54	7'-3 7/8"	21	A913-50
BC2	2	362S162-54	0'-4"	1	A913-50
BC3	2	362S162-54	9'-5 13/16"	28	A913-50
P2	1	PL1/8"X7"	0'-8 1/8"	2	A36
P4	2	PL1/8"X7"	0'-11"	5	A36
P5	1	PL1/8"X7"	1'-7"	5	A36
P6	5	PL1/8"X4"	0'-7"	5	A36
P7	1	PL1/8"X4"	0'-11"	2	A36
P8	1	PL1/8"X14 15/16"	1'-4"	6	A36
P9	3	PL1/8"X4"	0'-9"	3	A36
P10	2	PL1/8"X7"	1'-1"	6	A36
P11	1	PL1/8"X7"	1'-5"	4	A36
P12	2	PL1/8"X2"	0'-8 1/8"	1	A36
P13	10	PL1/8"X2"	0'-3 5/8"	3	A36
P14	1	PL1/8"X9 1/16"	1'-2 11/16"	4	A36
P15	1	PL1/8"X7"	1'-2"	3	A36
P16	2	PL1/8"X7"	0'-10"	5	A36
P17	1	PL1/8"X8"	1'-9"	6	A36
TC5	1	362S162-54	15'-1 3/16"	22	A913-50
TC6	1	362S162-54	3'-7 11/16"	5	A913-50
TC7	1	362S162-54	15'-1 3/16"	22	A913-50
TC8	1	362S162-54	3'-7 11/16"	5	A913-50
WB6	2	362S162-54	1'-2 3/8"	3	A913-50
WB10	2	362S162-54	8'-8 13/16"	25	A913-50
WB11	2	362S162-54	5'-6 3/4"	16	A913-50
WB15	2	362S162-54	0'-9 5/8"	2	A913-50
WB16	2	362S162-54	8'-7 13/16"	25	A913-50
WB17	2	362S162-54	1'-11 1/8"	6	A913-50
WB18	2	362S162-54	3'-3 11/16"	10	A913-50
WB19	2	362S162-54	2'-1 15/16"	6	A913-50
WB20	2	362S162-54	1'-3 3/16"	4	A913-50
WB21	2	362S162-54	3'-5 1/16"	10	A913-50
WB22	2	362S162-54	3'-4 3/4"	10	A913-50
WB23	2	362S162-54	2'-1 3/8"	6	A913-50
WB24	2	362S162-54	2'-6 1/2"	7	A913-50
WB25	2	362S162-54	3'-0 3/8"	9	A913-50
WB26	2	362S162-54	3'-3 13/16"	10	A913-50
WB27	2	362S162-54	6'-7 13/16"	19	A913-50
WB28	2	362S162-54	2'-7 7/16"	8	A913-50
WB29	2	362S162-54	1'-8 3/16"	5	A913-50
TOTAL WEIGHT THIS DRAWING				345	

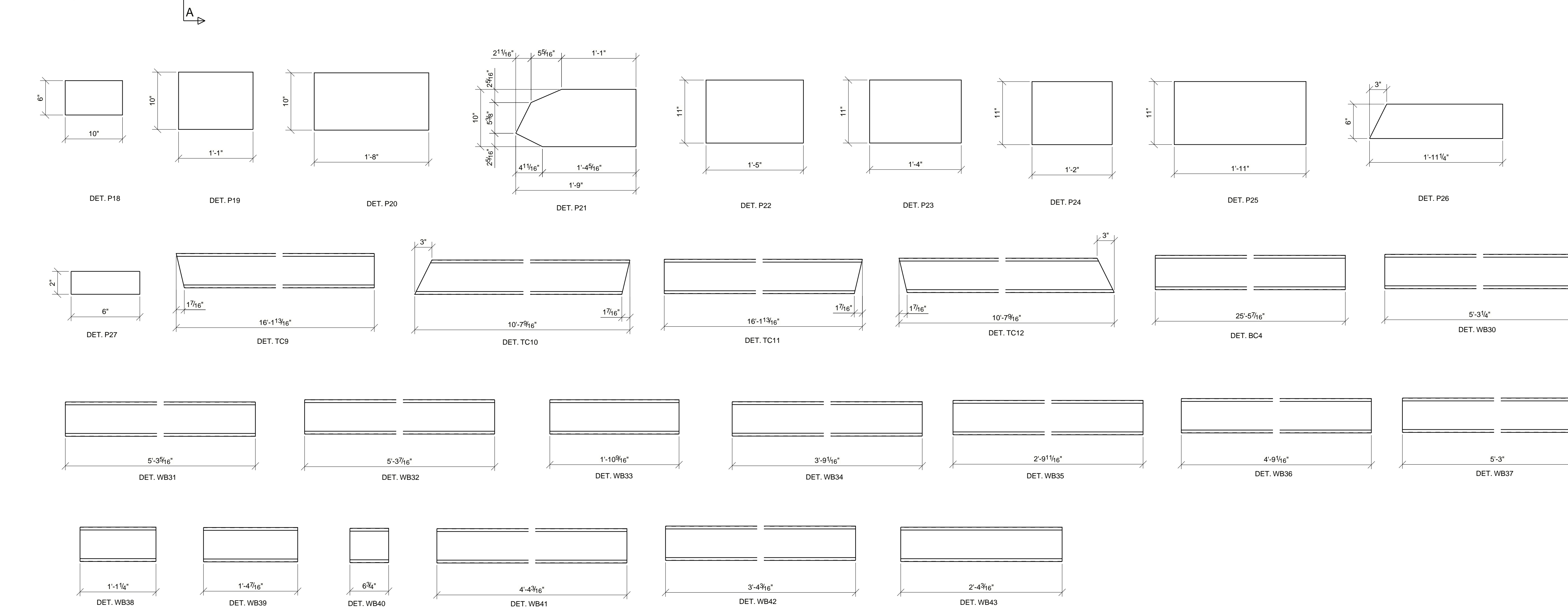


REV	DESCRIPTION	DATE
	ASSEMBLY TD43 198 CARIBBEAN ROAD NAPLES, FLORIDA	
	DESCRIPTION	
	PROJECT NAME	CARIBBEAN ROAD SPEC
	DRAWN BY	DZ
	DATE DRAWN	01/23/2023
	JOB No.	
	DRG No.	2

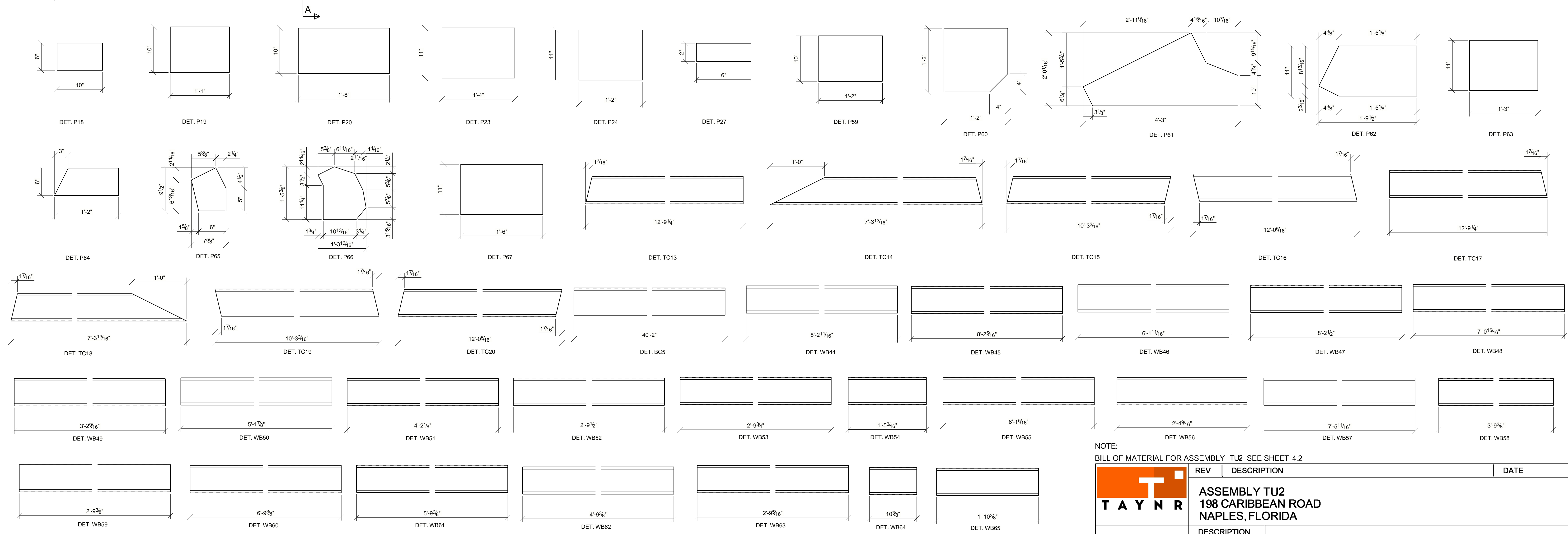
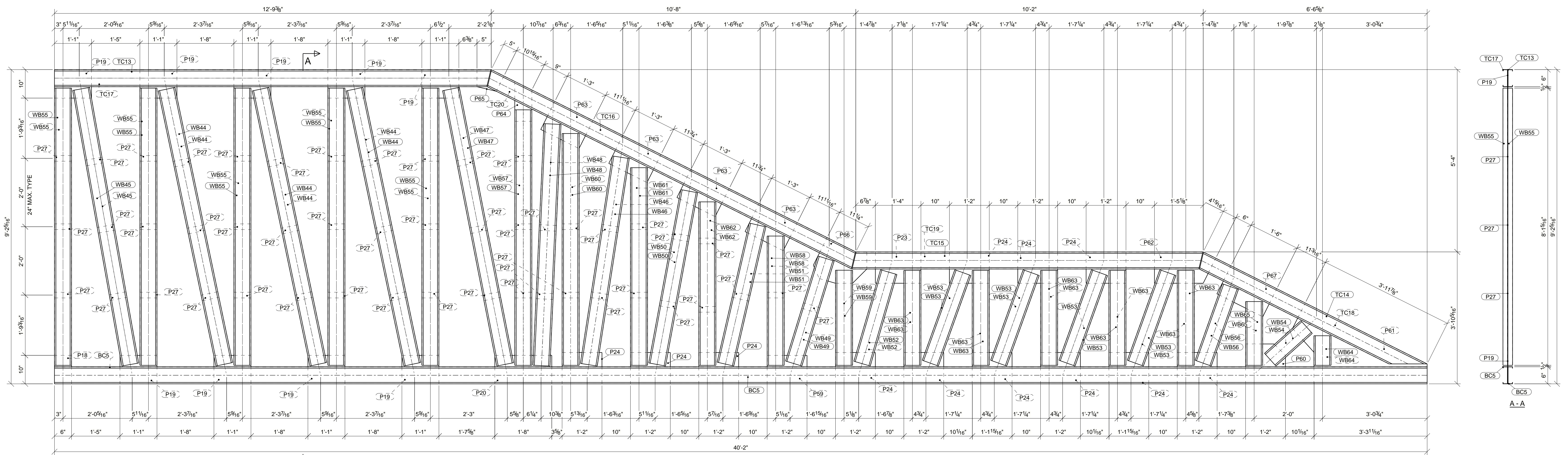


BILL OF MATERIAL

MARK	QTY	DESCRIPTION	LENGTH	WEIGHT	REMARKS
TU1	1	Truss			
BC4	2	600S162-54	25'-5 7/16"	96	A913-50
P18	4	PL1/8"X6"	0'-10"	9	A36
P19	16	PL1/8"X10"	1'-1"	74	A36
P20	1	PL1/8"X10"	1'-8"	7	A36
P21	1	PL1/8"X10"	1'-9"	7	A36
P22	1	PL1/8"X11"	1'-5"	7	A36
P23	2	PL1/8"X11"	1'-4"	12	A36
P24	2	PL1/8"X11"	1'-2"	11	A36
P25	1	PL1/8"X11"	1'-11"	9	A36
P26	1	PL1/8"X6"	1'-11 1/4"	5	A36
P27	42	PL1/8"X2"	0'-6"	18	A36
TC9	1	600S162-54	16'-1 13/16"	31	A913-50
TC10	1	600S162-54	10'-7 9/16"	20	A913-50
TC11	1	600S162-54	16'-1 13/16"	31	A913-50
TC12	1	600S162-54	10'-7 9/16"	20	A913-50
WB30	6	600S162-54	5'-3 1/4"	60	A913-50
WB31	2	600S162-54	5'-3 5/16"	20	A913-50
WB32	8	600S162-54	5'-3 7/16"	80	A913-50
WB33	2	600S162-54	1'-10 9/16"	7	A913-50
WB34	2	600S162-54	3'-9 1/16"	14	A913-50
WB35	2	600S162-54	2'-9 11/16"	11	A913-50
WB36	2	600S162-54	4'-9 1/16"	18	A913-50
WB37	20	600S162-54	5'-3"	199	A913-50
WB38	2	600S162-54	1'-1 1/4"	4	A913-50
WB39	2	600S162-54	1'-4 7/16"	5	A913-50
WB40	2	600S162-54	0'-6 3/4"	2	A913-50
WB41	2	600S162-54	4'-4 3/16"	16	A913-50
WB42	2	600S162-54	3'-4 3/16"	13	A913-50
WB43	2	600S162-54	2'-4 3/16"	9	A913-50
TOTAL WEIGHT THIS DRAWING				815	



REV	DESCRIPTION	DATE
	ASSEMBLY TU1 198 CARIBBEAN ROAD NAPLES, FLORIDA	
DESCRIPTION		
PROJECT NAME	CARIBBEAN ROAD SPEC	
DRAWN BY	DZ	JOB No.
DATE DRAWN	01/23/2023	DRG No. 3



NOTE:
BILL OF MATERIAL FOR ASSEMBLY TU2 SEE SHEET 4.2

REV	DESCRIPTION	DATE
	ASSEMBLY TU2 198 CARIBBEAN ROAD NAPLES, FLORIDA	
	DESCRIPTION	
	PROJECT NAME	CARIBBEAN ROAD SPEC
	DRAWN BY	DZ
	DATE DRAWN	01/23/2023
	JOB No.	
	DRG No.	4

BILL OF MATERIAL

MARK	QTY	DESCRIPTION	LENGTH	WEIGHT	REMARKS
TU2	1	Truss			
BC5	2	600S162-54	40'-2"	152	A913-50
P18	1	PL1/8"X6"	0'-10"	2	A36
P19	9	PL1/8"X10"	1'-1"	41	A36
P20	1	PL1/8"X10"	1'-8"	7	A36
P23	1	PL1/8"X11"	1'-4"	6	A36
P24	12	PL1/8"X11"	1'-2"	66	A36
P27	48	PL1/8"X2"	0'-6"	20	A36
P59	1	PL1/8"X10"	1'-2"	5	A36
P60	1	PL1/8"X14"	1'-2"	7	A36
P61	1	PL1/8"X24 1/16"	4'-3"	27	A36
P62	1	PL1/8"X11"	1'-9 1/2"	8	A36
P63	4	PL1/8"X11"	1'-3"	23	A36
P64	1	PL1/8"X6"	1'-2"	3	A36
P65	1	PL1/8"X9 1/2"	0'-7 5/8"	2	A36
P66	1	PL1/8"X17 3/8"	1'-3 13/16"	7	A36
P67	1	PL1/8"X11"	1'-6"	7	A36
TC13	1	600S162-54	12'-9 1/4"	24	A913-50
TC14	1	600S162-54	7'-3 13/16"	14	A913-50
TC15	1	600S162-54	10'-3 3/16"	19	A913-50
TC16	1	600S162-54	12'-0 5/16"	23	A913-50
TC17	1	600S162-54	12'-9 1/4"	24	A913-50
TC18	1	600S162-54	7'-3 13/16"	14	A913-50
TC19	1	600S162-54	10'-3 3/16"	19	A913-50
TC20	1	600S162-54	12'-0 5/16"	23	A913-50
WB44	6	600S162-54	8'-2 11/16"	93	A913-50
WB45	2	600S162-54	8'-2 5/16"	31	A913-50
WB46	2	600S162-54	6'-1 11/16"	23	A913-50
WB47	2	600S162-54	8'-2 1/2"	31	A913-50
WB48	2	600S162-54	7'-0 15/16"	27	A913-50
WB49	2	600S162-54	3'-2 9/16"	12	A913-50
WB50	2	600S162-54	5'-1 7/8"	20	A913-50
WB51	2	600S162-54	4'-2 1/8"	16	A913-50
WB52	2	600S162-54	2'-9 1/2"	11	A913-50
WB53	8	600S162-54	2'-9 3/4"	43	A913-50
WB54	2	600S162-54	1'-5 3/16"	5	A913-50
WB55	10	600S162-54	8'-1 5/16"	153	A913-50
WB56	2	600S162-54	2'-4 9/16"	9	A913-50
WB57	2	600S162-54	7'-5 11/16"	28	A913-50
WB58	2	600S162-54	3'-9 3/8"	14	A913-50
WB59	2	600S162-54	2'-9 3/8"	11	A913-50
WB60	2	600S162-54	6'-9 3/8"	26	A913-50
WB61	2	600S162-54	5'-9 3/8"	22	A913-50
WB62	2	600S162-54	4'-9 3/8"	18	A913-50
WB63	10	600S162-54	2'-9 5/16"	53	A913-50
WB64	2	600S162-54	0'-10 3/8"	3	A913-50
WB65	2	600S162-54	1'-10 3/8"	7	A913-50
TOTAL WEIGHT THIS DRAWING				1199	



600 Sunbeam Ave Suite 1
Sacramento, CA 95811
(916) 891-3003
info@TAYNR.com

REV	DESCRIPTION	DATE
	ASSEMBLY TU2 BILL OF MATIRIAL 198 CARIBBEAN ROAD NAPLES, FLORIDA	
	DESCRIPTION	
	PROJECT NAME	CARIBBEAN ROAD SPEC
	DRAWN BY	DZ
	DATE DRAWN	01/23/2023
	JOB No.	
	DRG No.	4.2