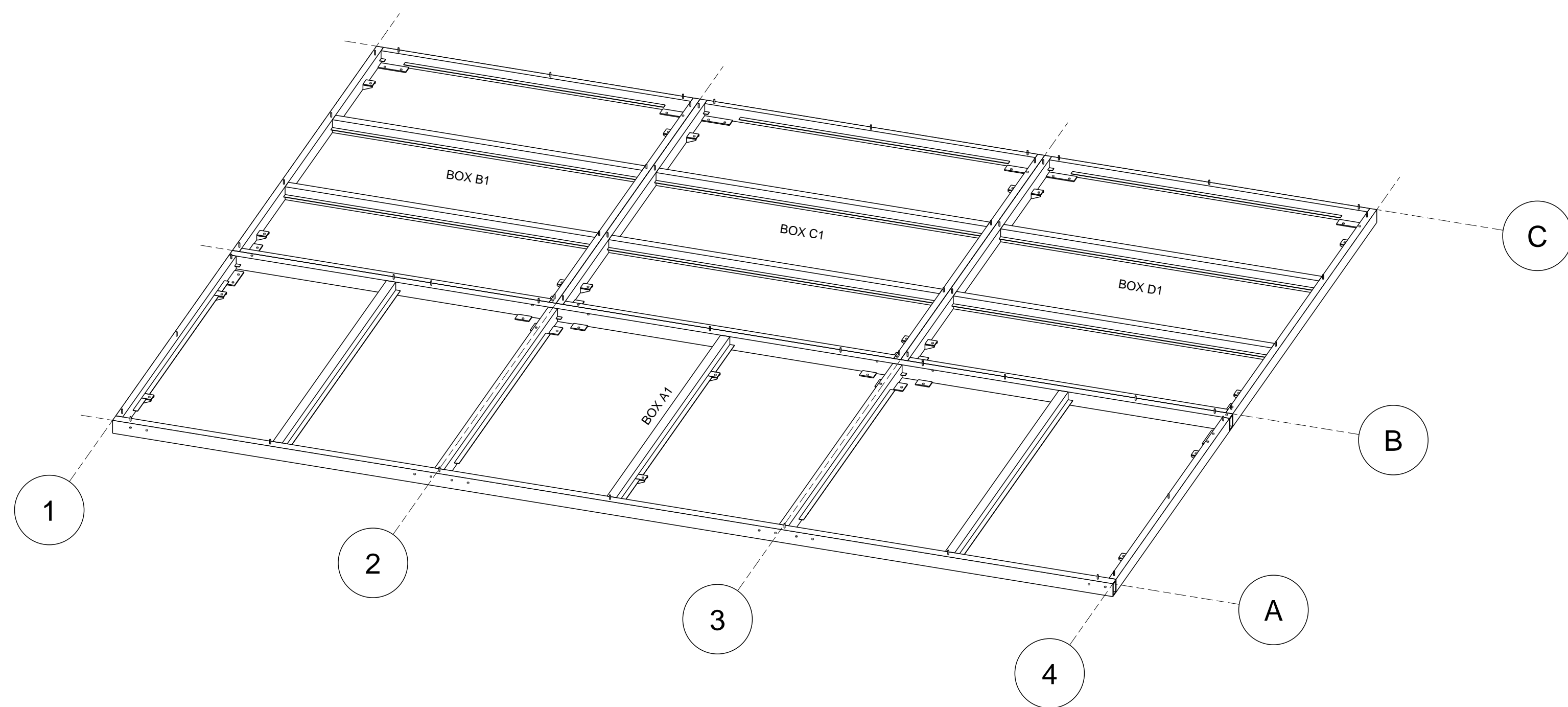


**FRAMING BASE PLAN**  
Scale: 1/8" = 1'-0"



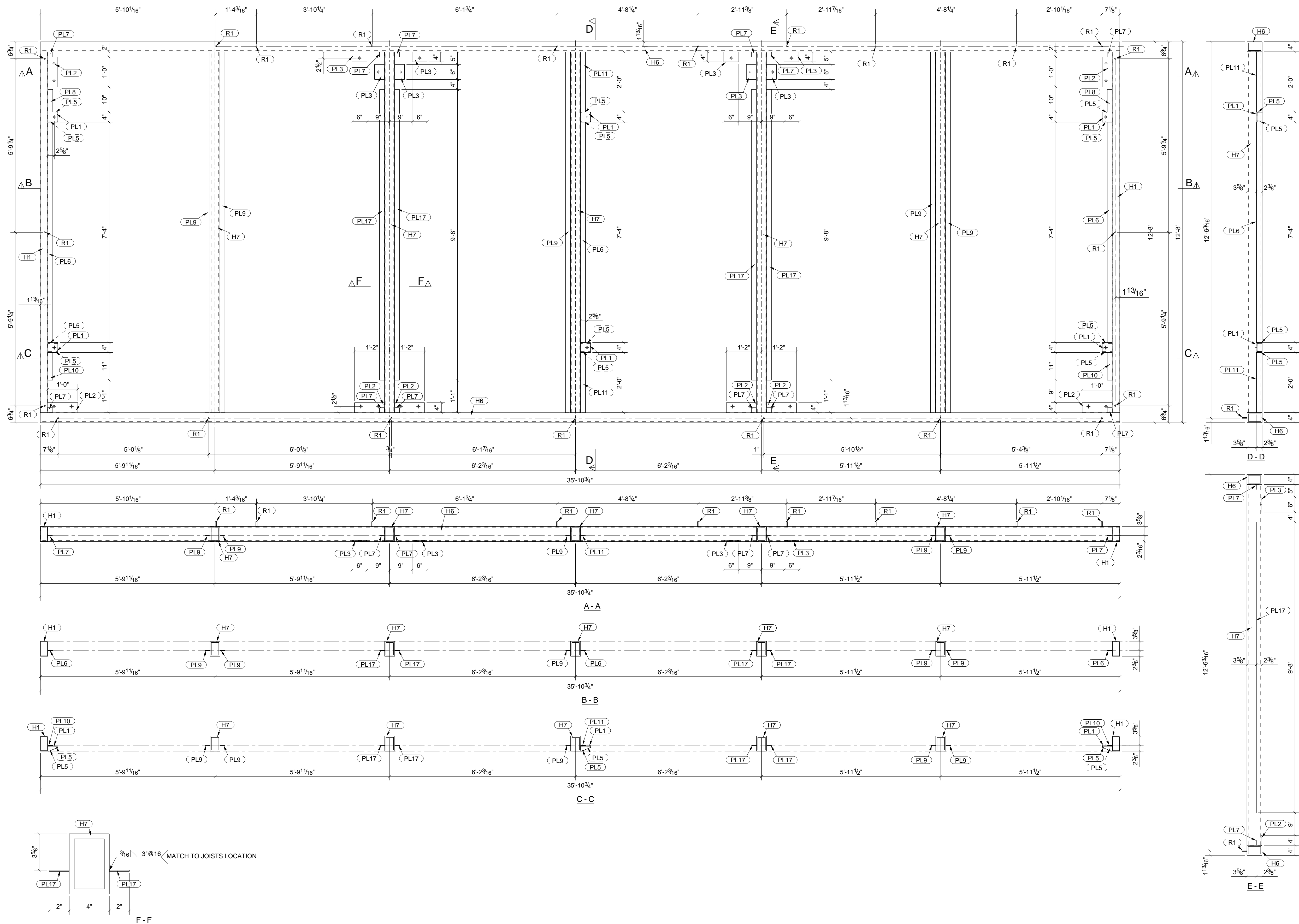
**GENERAL VIEW**  
Scale: 1/8" = 1'-0"

REV	DESCRIPTION	DATE
4	CONNECTIONS PLATES UPDATE	12/18/2020
3	BASE FRAME UPDATE	12/15/2020
2	GENERAL UPDATE	12/10/2020
1	BASE FRAMING HSS MEMBERS	12/08/2020

DESCRIPTION	FRAMING BASE PLAN		
PROJECT NAME	UCDH MODULAR BUILDING		
DRAWN BY	DZ	JOB No.	20-115
DATE DRAWN	12/08/2020	DRG No.	S1

# BILL OF MATERIAL

MARK	QTY	DESCRIPTION	LENGTH	WEIGHT	REMARKS
BOX A1	1	SUPPORT FRAME			
H7	1	HSS6X4X1/2	12'-0"	322	A36
H1	2	HSS6X3X3/16	12'-0"	239	A36
H6	2	HSS6X4X1/2	35'-10 3/4"	1925	A36
H7	4	HSS6X4X1/2	12'-0"	1287	A36
PL1	6	PL3/8"X4"	0'-4"	10	A36
PL2	8	PL3/8"X4"	1'-0"	41	A36
PL3	8	PL3/8"X4"	0'-6"	20	A36
PL5	12	PL3/8"X2"	0'-4"	7	A36
PL6	3	PL1/8"X2"	7'-4"	19	A36
PL7	12	PL1/8"X2"	0'-2"	2	A36
PL8	2	PL1/8"X2"	0'-9"	1	A36
PL9	5	PL1/8"X2"	12'-0"	51	A36
PL10	2	PL1/8"X2"	0'-11"	2	A36
PL11	2	PL1/8"X2"	2'-0"	3	A36
PL17	4	PL1/8"X2"	9'-8"	33	A36
R1	22	ROD1/2"	0'-2"	2	A36
TOTAL WEIGHT THIS DRAWING				3965	



1 - BOX A1

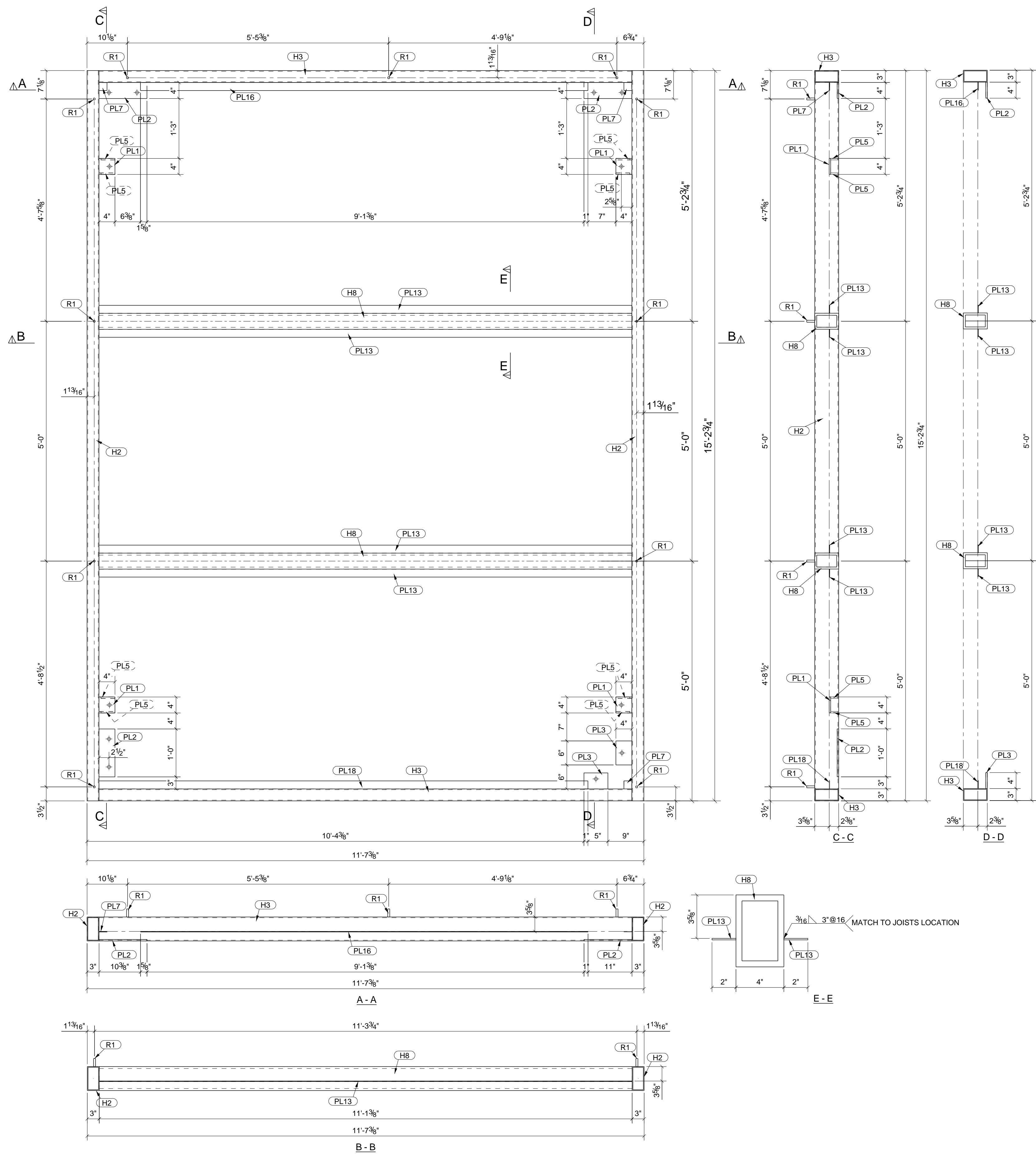
NOTE  
 1. ALL FILLED WELD 3/16" UNO.  
 2. USE ELECTRODES E70XX FOR A36 STEEL.  
 3. ALL BOLTS AND THREADED RODS SHALL BE ASTM A325.

REV	DESCRIPTION	DATE
4	CONNECTIONS PLATES UPDATE	12/18/2020
3	BASE FRAME UPDATE	12/15/2020
2	GENERAL UPDATE	12/10/2020
1	BASE FRAMING HSS MEMBERS	12/08/2020

DESCRIPTION	ASSEMBLY BOX A1		
PROJECT NAME	UCDH MODULAR BUILDING		
DRAWN BY	DZ	JOB No.	DRG No.
DATE DRAWN	12/08/2020	20-115	S2

# BILL OF MATERIAL

MARK	QTY	DESCRIPTION	LENGTH	WEIGHT	REMARKS
BOX B1	1	SUPPORT FRAME			
H3	1	HSS6X3X3/16	11'-1 3/8"	111	A36
H2	2	HSS6X3X3/16	15'-2 3/4"	304	A36
H3	1	HSS6X3X3/16	11'-1 3/8"	111	A36
H8	2	HSS6X4X1/2	11'-1 3/8"	596	A36
PL1	4	PL3/8"X4"	0'-4"	7	A36
PL2	3	PL3/8"X4"	1'-0"	15	A36
PL3	2	PL3/8"X4"	0'-6"	5	A36
PL5	8	PL3/8"X2"	0'-4"	5	A36
PL7	3	PL1/8"X2"	0'-2"	0	A36
PL13	4	PL1/8"X2"	11'-1 3/8"	38	A36
PL16	1	PL1/8"X2"	9'-4"	8	A36
PL18	1	PL1/8"X2"	10'-2 3/8"	9	A36
R1	11	ROD1/2"	0'-2"	1	A36
TOTAL WEIGHT THIS DRAWING				1209	



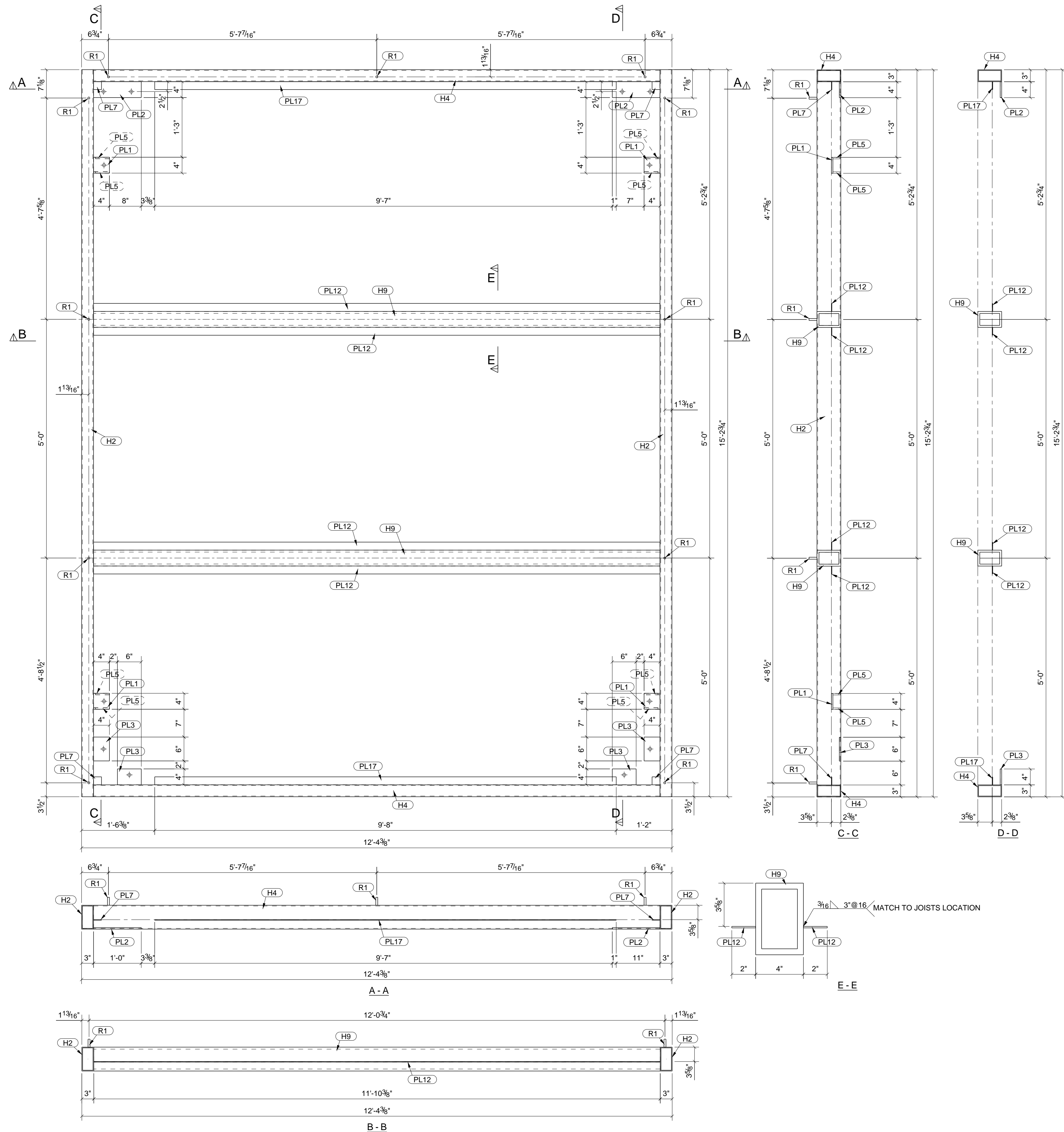
1 - BOX B1

NOTE  
 1. ALL FILLED WELD 3/16" UNO.  
 2. USE ELECTRODES E70XX FOR A36 STEEL.  
 3. ALL BOLTS AND THREADED RODS SHALL BE ASTM A325.

4	CONNECTIONS PLATES UPDATE	12/18/2020
3	BASE FRAME UPDATE	12/15/2020
2	GENERAL UPDATE	12/10/2020
REV	DESCRIPTION	DATE
DESCRIPTION ASSEMBLY BOX B1		
PROJECT NAME UCDH MODULAR BUILDING		
DRAWN BY	DZ	JOB No. 20-115
DATE DRAWN	12/10/2020	DRG No. S3

# BILL OF MATERIAL

MARK	QTY	DESCRIPTION	LENGTH	WEIGHT	REMARKS
BOX C1	1	SUPPORT FRAME			
H4	1	HSS6X3X3/16	11'-10 3/8"	118	A36
H2	2	HSS6X3X3/16	15'-2 3/4"	304	A36
H4	1	HSS6X3X3/16	11'-10 3/8"	118	A36
H9	2	HSS6X4X1/2	11'-10 3/8"	636	A36
PL1	4	PL3/8"X4"	0'-4"	7	A36
PL2	2	PL3/8"X4"	1'-0"	10	A36
PL3	4	PL3/8"X4"	0'-6"	10	A36
PL5	8	PL3/8"X2"	0'-4"	5	A36
PL7	4	PL1/8"X2"	0'-2"	1	A36
PL12	4	PL1/8"X2"	11'-10 3/8"	40	A36
PL17	2	PL1/8"X2"	9'-8"	16	A36
R1	11	ROD1/2"	0'-2"	1	A36
TOTAL WEIGHT THIS DRAWING				1267	



1 - BOX C1

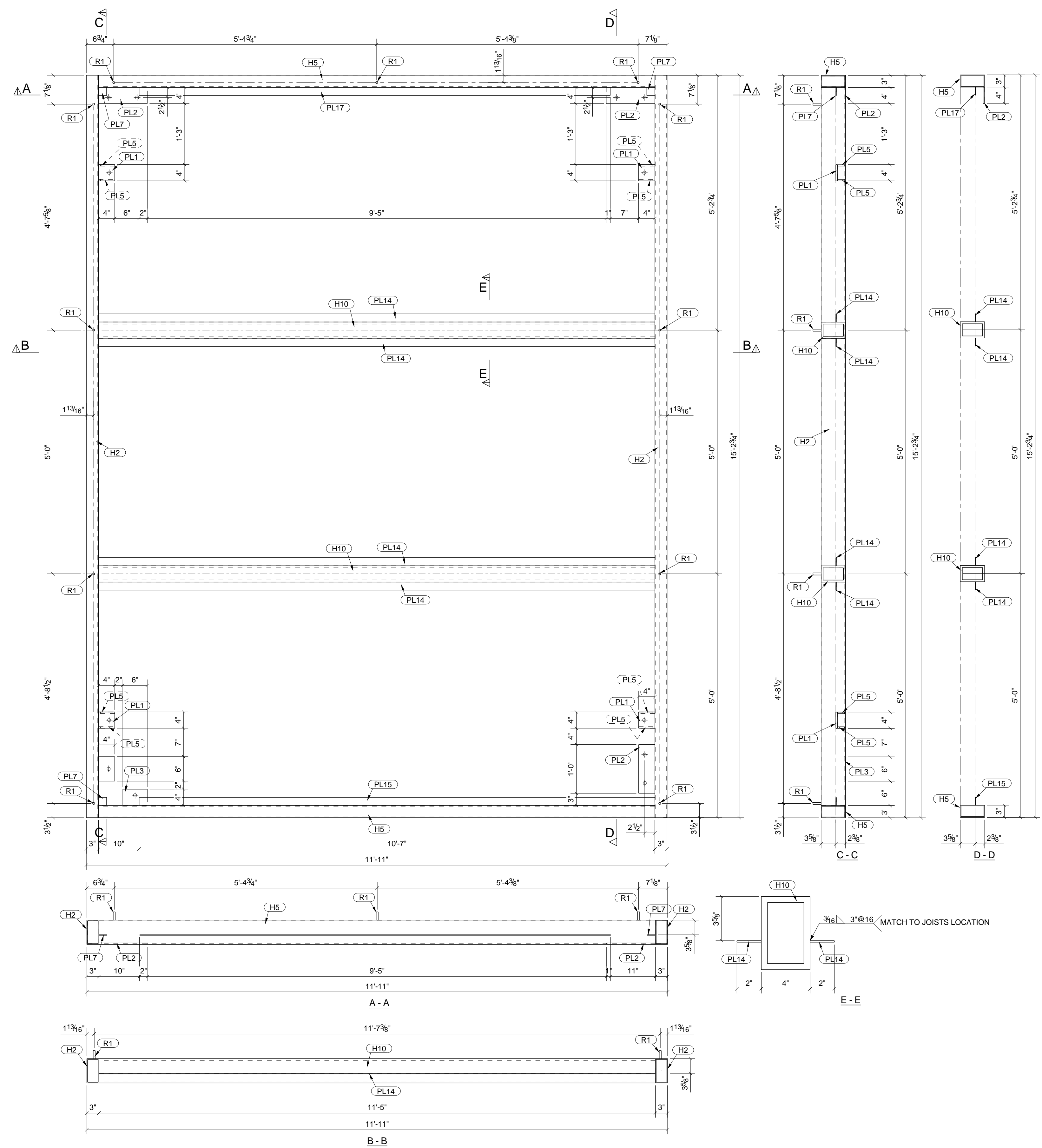
NOTE  
 1. ALL FILLED WELD 3/16" UNO.  
 2. USE ELECTRODES E70XX FOR A36 STEEL.  
 3. ALL BOLTS AND THREADED RODS SHALL BE ASTM A325.

4	CONNECTIONS PLATES UPDATE	12/18/2020
3	BASE FRAME UPDATE	12/15/2020
2	GENERAL UPDATE	12/10/2020
REV	DESCRIPTION	DATE

DESCRIPTION	ASSEMBLY BOX C1		
PROJECT NAME	UCDH MODULAR BUILDING		
DRAWN BY	DZ	JOB No.	DRG No.
DATE DRAWN	12/10/2020	20-115	S4

# BILL OF MATERIAL

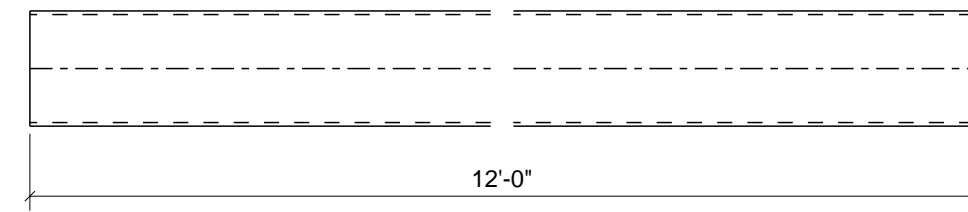
MARK	QTY	DESCRIPTION	LENGTH	WEIGHT	REMARKS
BOX D1	1	SUPPORT FRAME			
H5	1	HSS6X3X3/16	11'-5"	114	A36
H2	2	HSS6X3X3/16	15'-2 3/4"	304	A36
H5	1	HSS6X3X3/16	11'-5"	114	A36
H10	2	HSS6X4X1/2	11'-5"	612	A36
PL1	4	PL3/8"X4"	0'-4"	7	A36
PL2	3	PL3/8"X4"	1'-0"	15	A36
PL3	2	PL3/8"X4"	0'-6"	5	A36
PL5	8	PL3/8"X2"	0'-4"	5	A36
PL7	3	PL1/8"X2"	0'-2"	0	A36
PL14	4	PL1/8"X2"	11'-5"	39	A36
PL15	1	PL1/8"X2"	10'-7"	9	A36
PL17	1	PL1/8"X2"	9'-8"	8	A36
R1	11	ROD1/2"	0'-2"	1	A36
TOTAL WEIGHT THIS DRAWING				1233	



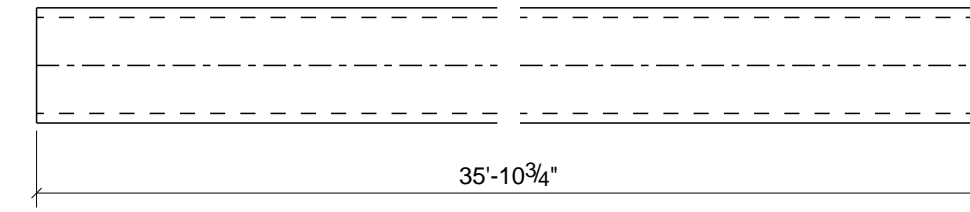
1 - BOX D1

NOTE  
 1. ALL FILLED WELD 3/16" UNO.  
 2. USE ELECTRODES E70XX FOR A36 STEEL.  
 3. ALL BOLTS AND THREADED RODS SHALL BE ASTM A325.

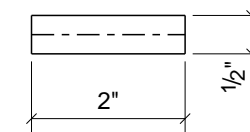
4	CONNECTIONS PLATES UPDATE	12/18/2020
3	BASE FRAME UPDATE	12/15/2020
2	GENERAL UPDATE	12/10/2020
REV	DESCRIPTION	DATE
DESCRIPTION ASSEMBLY BOX D1		
PROJECT NAME UCDH MODULAR BUILDING		
DRAWN BY	DZ	JOB No. 20-115
DATE DRAWN	12/10/2020	DRG No. S5



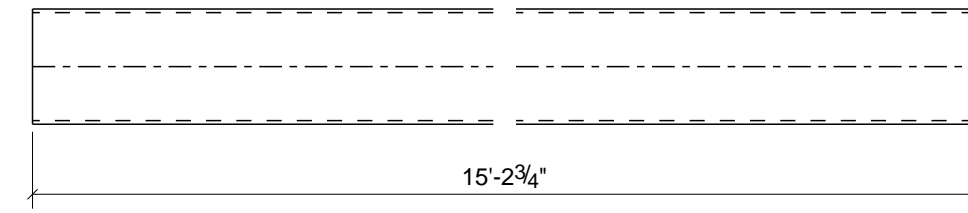
2 - H1



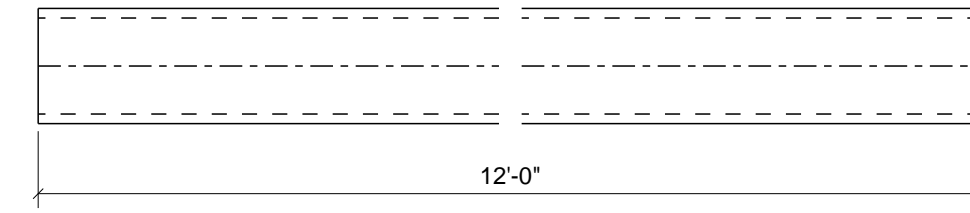
2 - H6



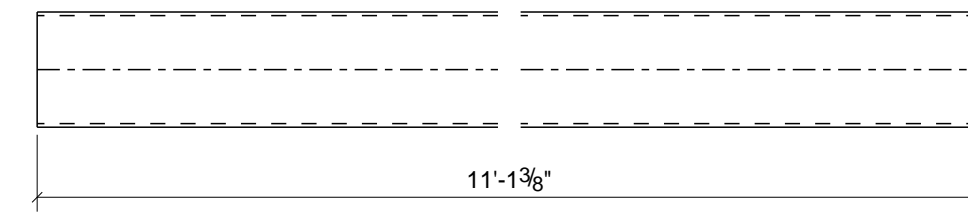
55 - R1



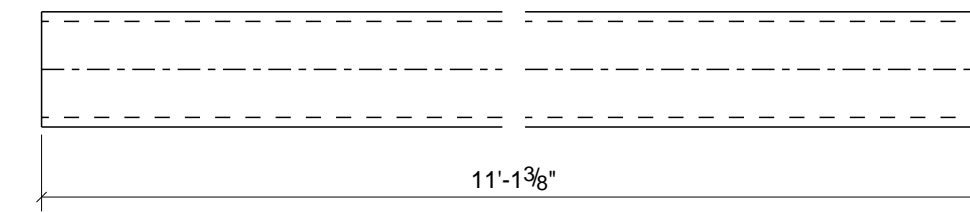
6 - H2



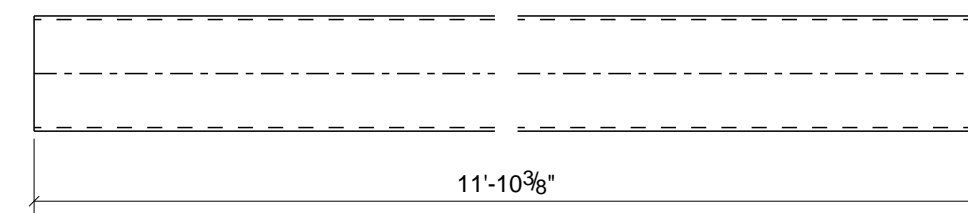
5 - H7



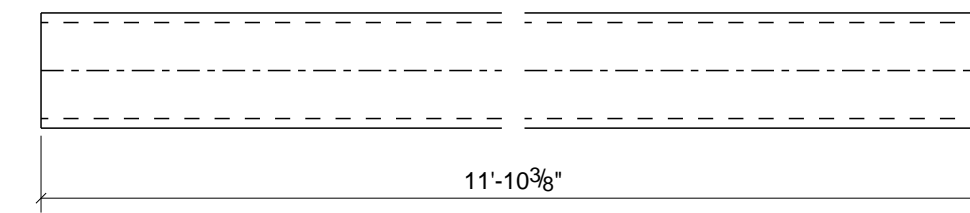
2 - H3



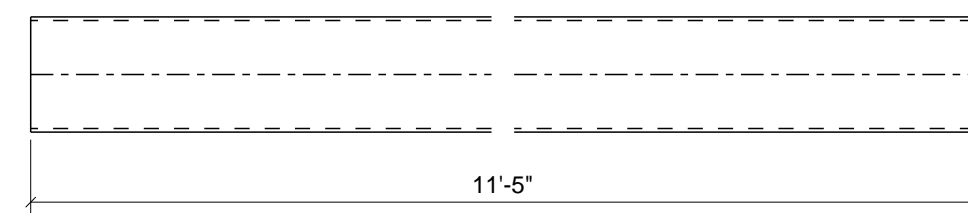
2 - H8



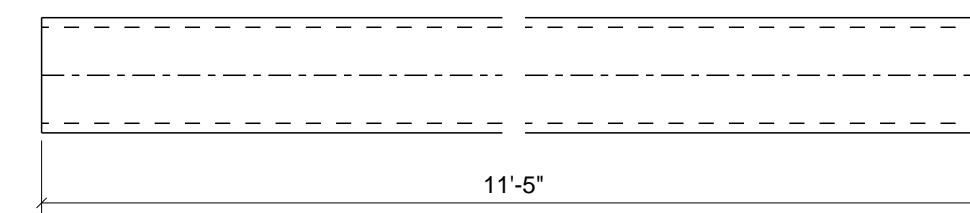
2 - H4



2 - H9



2 - H5



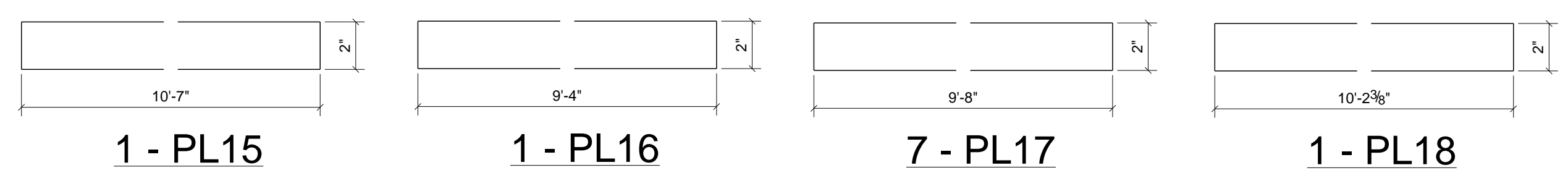
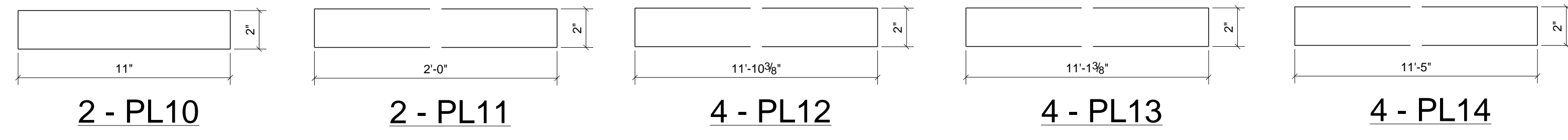
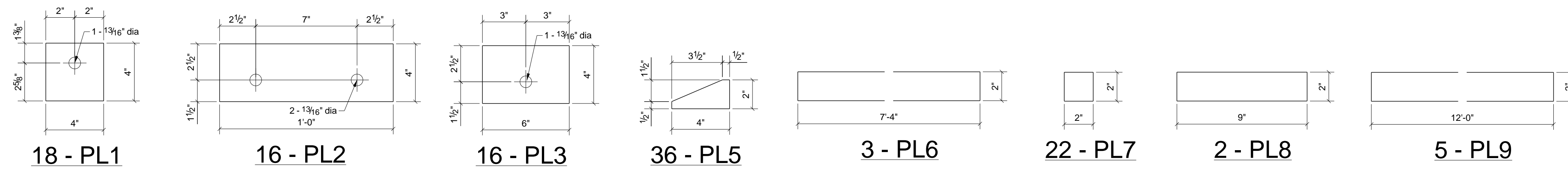
2 - H10

### BILL OF MATERIAL

MARK	QTY	DESCRIPTION	LENGTH	WEIGHT	REMARKS
H1	2	HSS6X3X3/16	12'-0"	239	A36
H2	6	HSS6X3X3/16	15'-2 3/4"	911	A36
H3	2	HSS6X3X3/16	11'-1 3/8"	222	A36
H4	2	HSS6X3X3/16	11'-10 3/8"	237	A36
H5	2	HSS6X3X3/16	11'-5"	228	A36
H6	2	HSS6X4X1/2	35'-10 3/4"	1925	A36
H7	5	HSS6X4X1/2	12'-0"	1609	A36
H8	2	HSS6X4X1/2	11'-1 3/8"	596	A36
H9	2	HSS6X4X1/2	11'-10 3/8"	636	A36
H10	2	HSS6X4X1/2	11'-5"	612	A36
R1	55	ROD1/2"	0'-2"	6	A36
TOTAL WEIGHT THIS DRAWING				7221	

REV	DESCRIPTION	DATE
4	CONNECTIONS PLATES UPDATE	12/18/2020
3	BASE FRAME UPDATE	12/15/2020

DESCRIPTION	DETAILS R1, H1-H8		
PROJECT NAME	UCDH MODULAR BUILDING		
DRAWN BY	DZ	JOB No.	DRG No.
DATE DRAWN	12/10/2020	20-115	S6



### BILL OF MATERIAL

MARK	QTY	DESCRIPTION	LENGTH	WEIGHT	REMARKS
PL1	18	PL3/8"x4"	0'-4"	31	A36
PL2	16	PL3/8"x4"	1'-0"	82	A36
PL3	16	PL3/8"x4"	0'-6"	41	A36
PL5	36	PL3/8"x2"	0'-4"	21	A36
PL6	3	PL1/8"x2"	7'-4"	19	A36
PL7	22	PL1/8"x2"	0'-2"	3	A36
PL8	2	PL1/8"x2"	0'-9"	1	A36
PL9	5	PL1/8"x2"	12'-0"	51	A36
PL10	2	PL1/8"x2"	0'-11"	2	A36
PL11	2	PL1/8"x2"	2'-0"	3	A36
PL12	4	PL1/8"x2"	11'-10 3/8"	40	A36
PL13	4	PL1/8"x2"	11'-1 3/8"	38	A36
PL14	4	PL1/8"x2"	11'-5"	39	A36
PL15	1	PL1/8"x2"	10'-7"	9	A36
PL16	1	PL1/8"x2"	9'-4"	8	A36
PL17	7	PL1/8"x2"	9'-8"	58	A36
PL18	1	PL1/8"x2"	10'-2 3/8"	9	A36
TOTAL WEIGHT THIS DRAWING				453	

4	CONNECTIONS PLATES UPDATE	12/18/2020
3	BASE FRAME UPDATE	12/15/2020
2	GENERAL UPDATE	12/10/2020
REV	DESCRIPTION	DATE

DESCRIPTION	DETAILS PL1-PL3, PL5-PL18		
PROJECT NAME	UCDH MODULAR BUILDING		
DRAWN BY	DZ	JOB No.	20-115
DATE DRAWN	12/10/2020	DRG No.	S7